



A.S.L. TO4

*Azienda Sanitaria Locale
di Ciriè, Chivasso e Ivrea*

A.S.L. TO4
Atto Aziendale
Piano di Organizzazione 2019

Organigramma

ASL TO 4 – Organigramma
Febbraio 2019 – Aggiornato a Novembre 2021



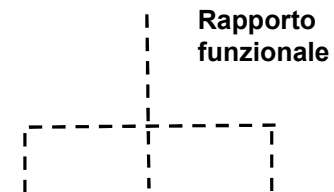
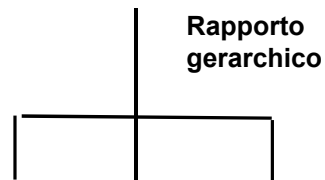
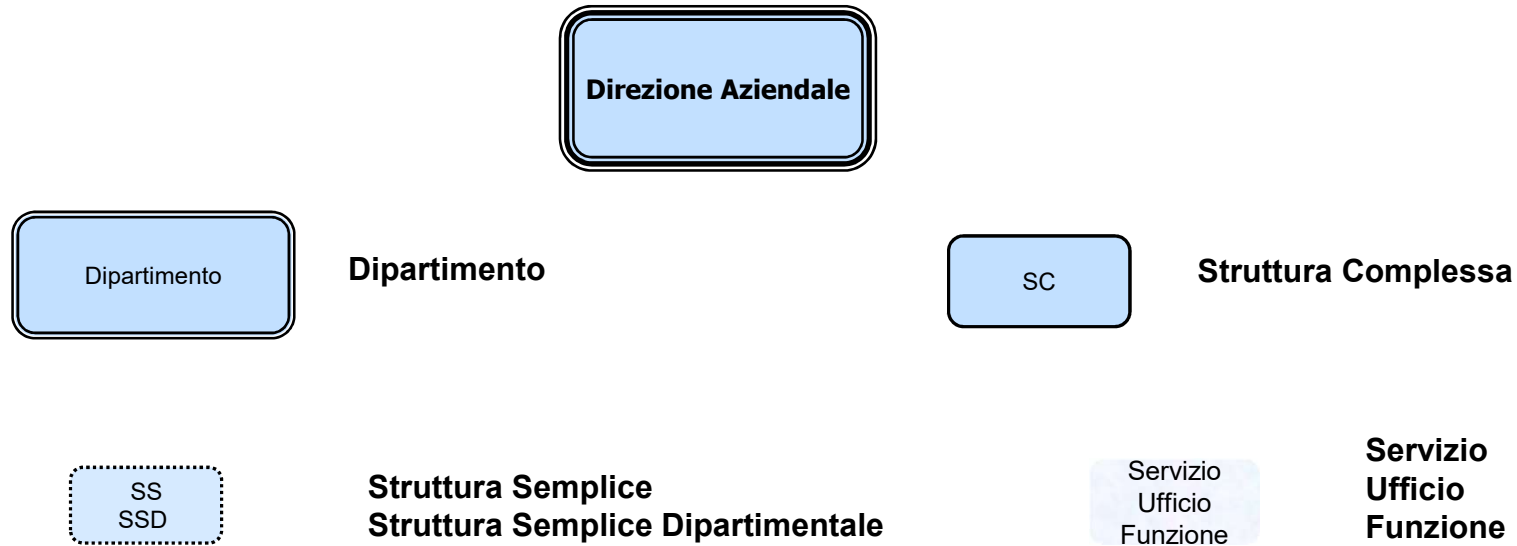
A.S.L. TO4

*Azienda Sanitaria Locale
di Ciriè, Chivasso e Ivrea*



Organigramma aziendale

Rappresentazione organigramma e legenda



Are



A.S.L. TO4

*Azienda Sanitaria Locale
di Ciriè, Chivasso e Ivrea*

- Articolazione generale
- Area Staff
- Area Amministrativa
- Area Sanitaria (ospedaliera, distrettuale, prevenzione)

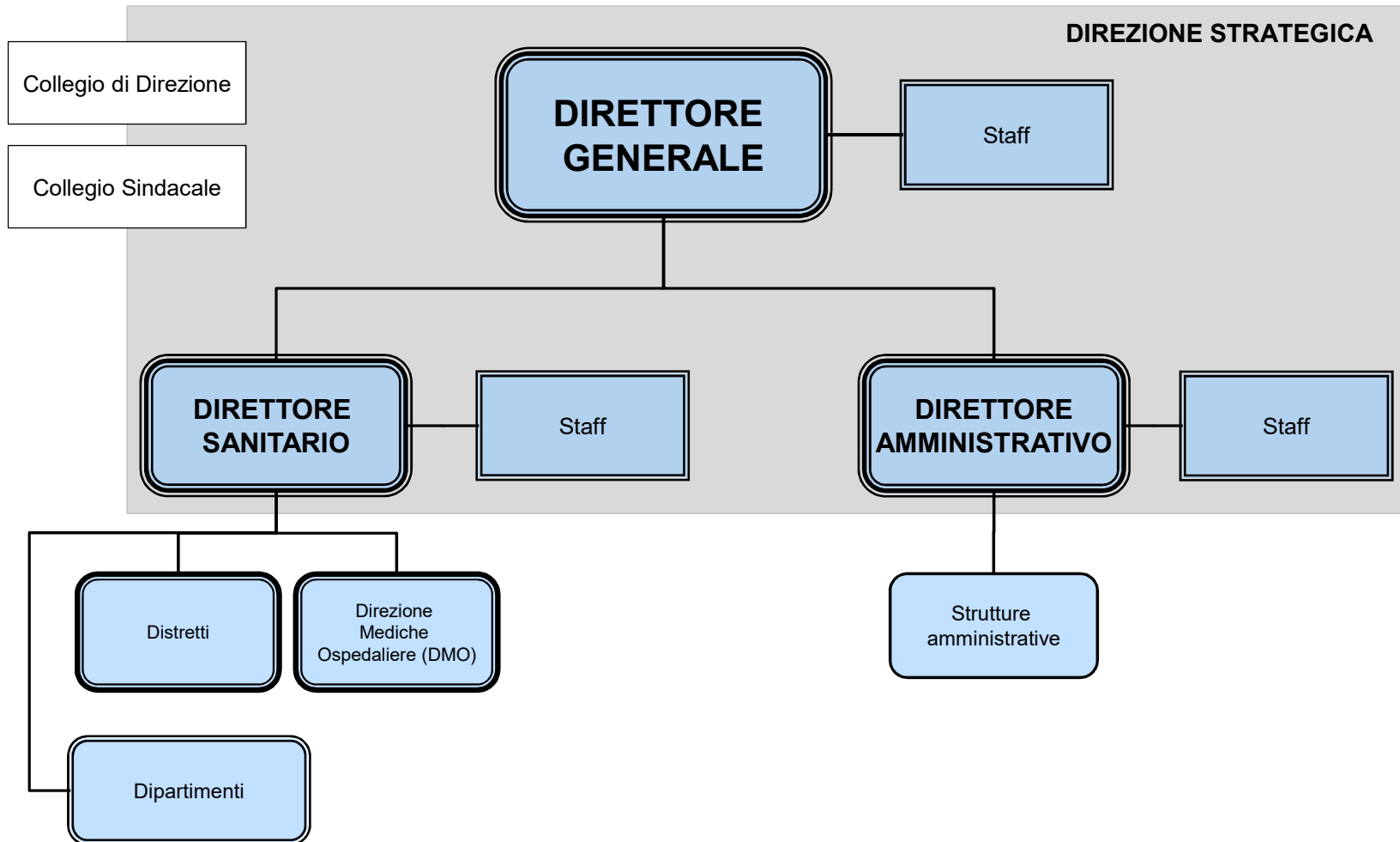


A.S.L. TO4

*Azienda Sanitaria Locale
di Ciriè, Chivasso e Ivrea*



Articolazione generale





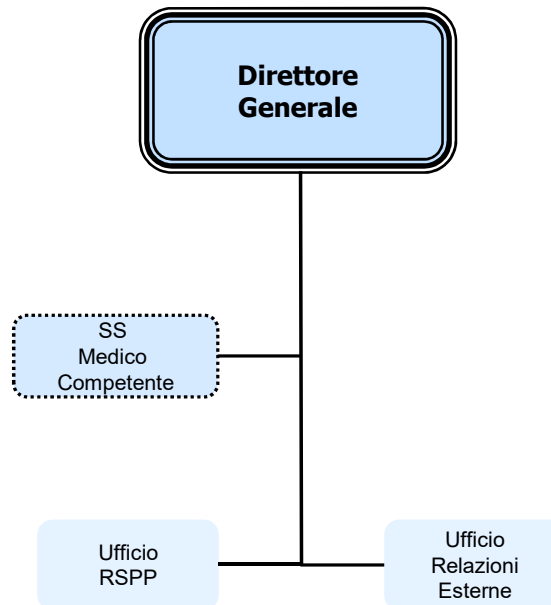
A.S.L. TO4

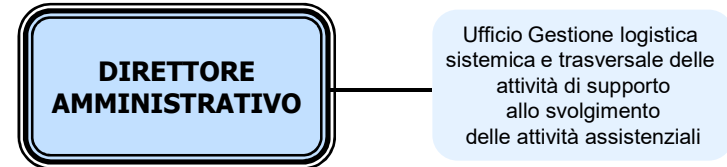
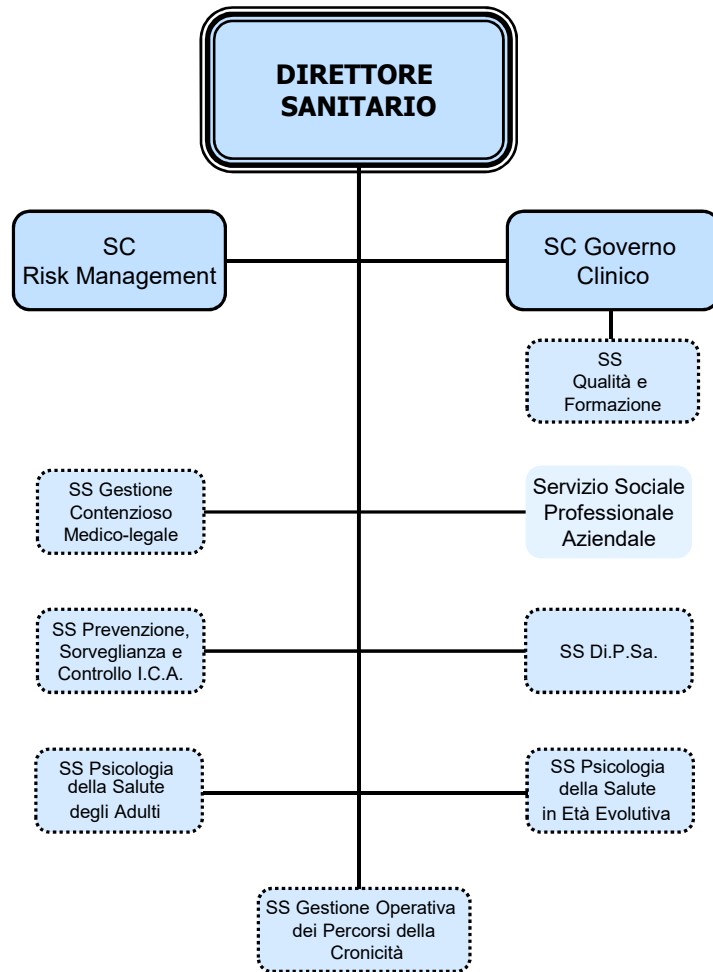
*Azienda Sanitaria Locale
di Ciriè, Chivasso e Ivrea*



Area Staff

- **Staff Direttore Generale**
- **Staff Direttore Sanitario**
- **Staff Direttore Amministrativo**





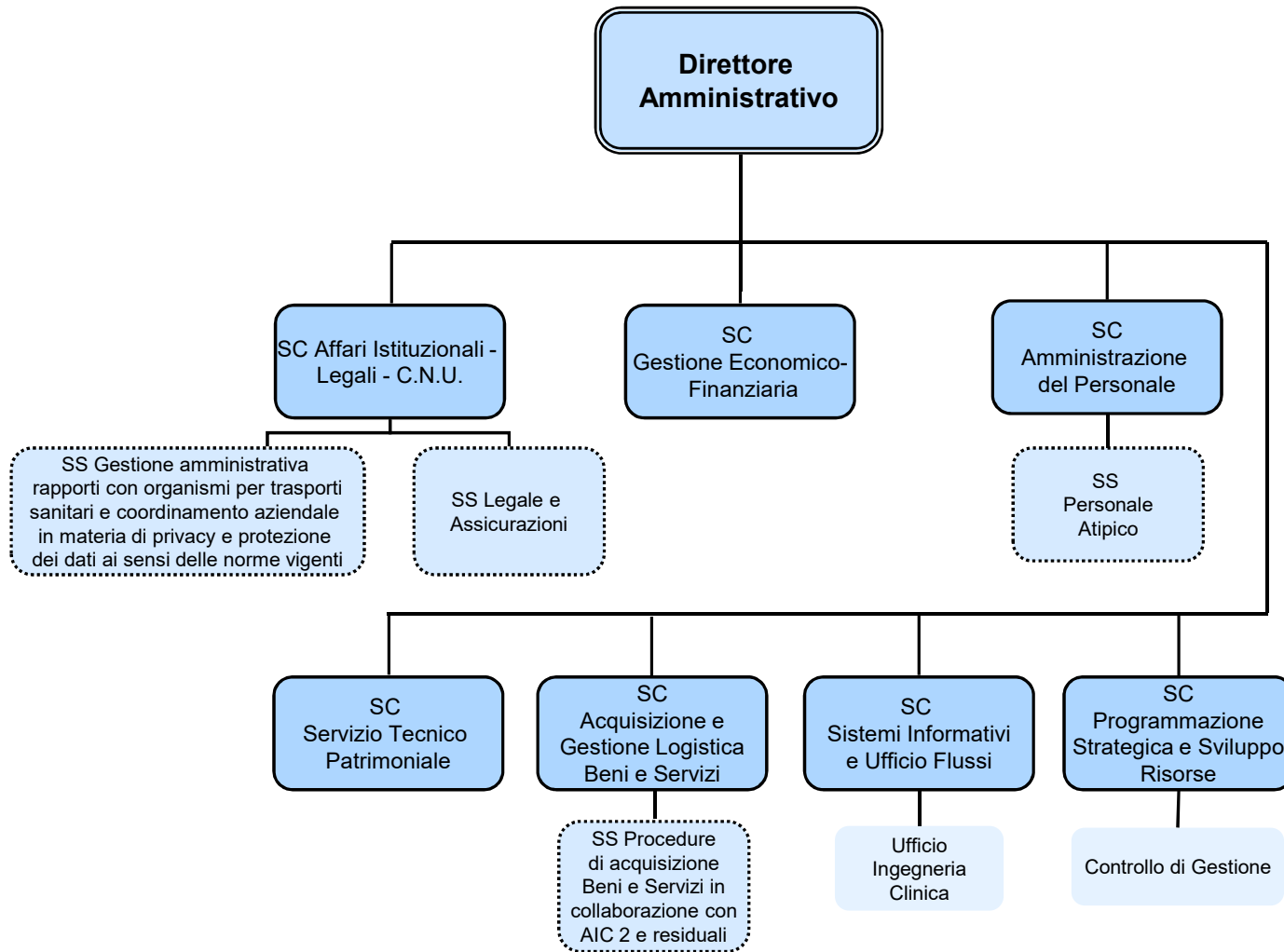


A.S.L. TO4

*Azienda Sanitaria Locale
di Ciriè, Chivasso e Ivrea*



Area Amministrativa



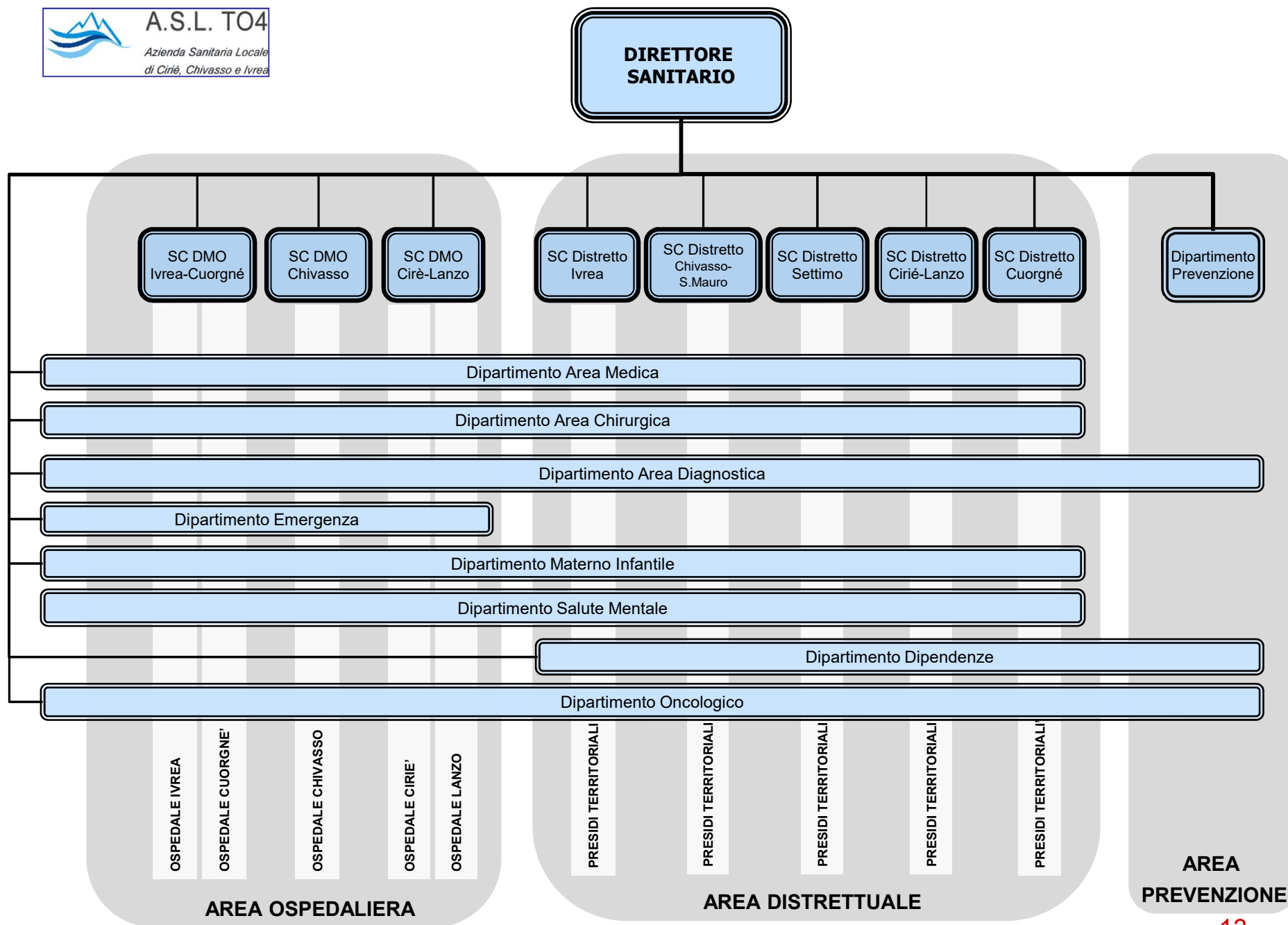


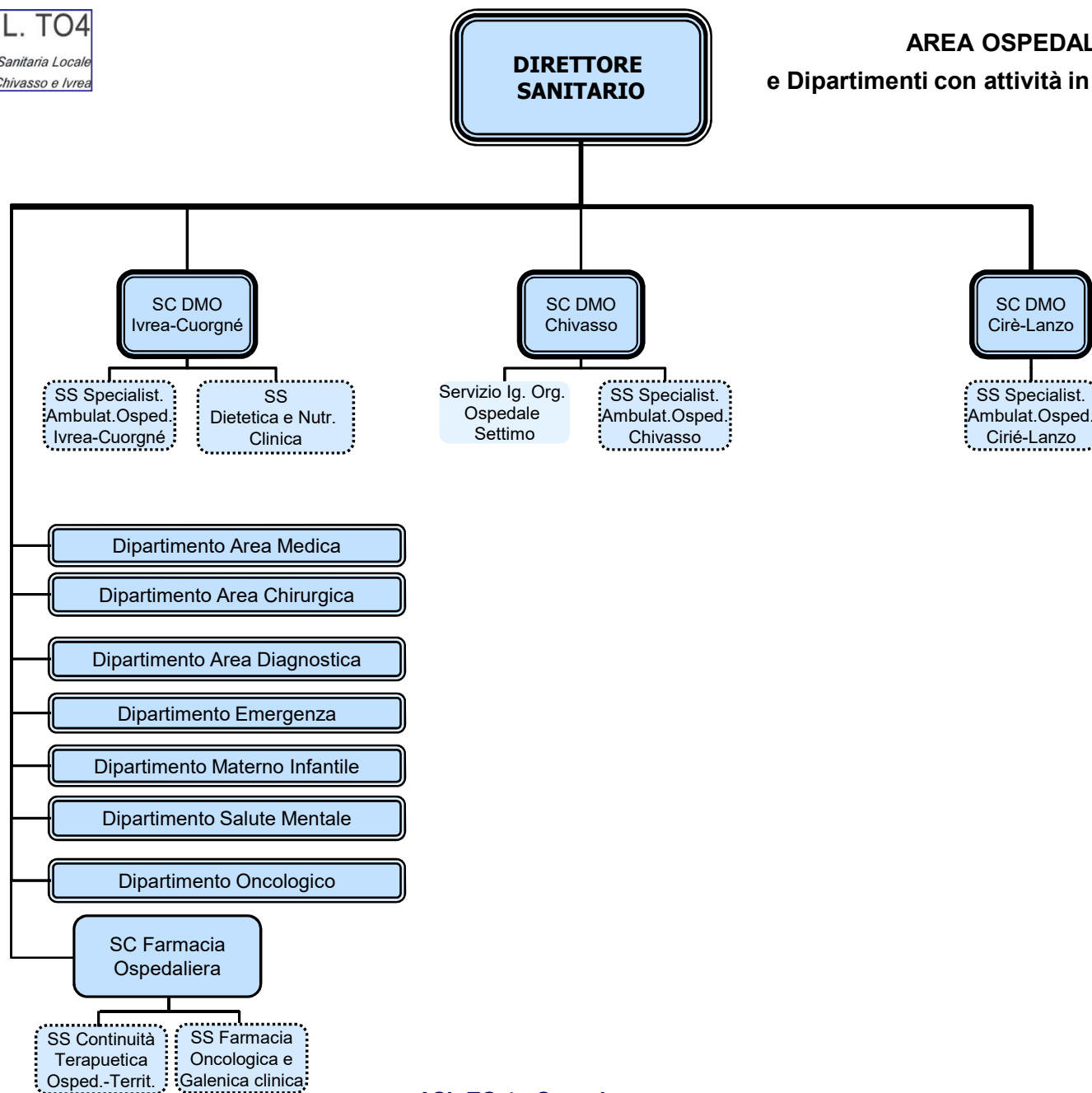
A.S.L. TO4

*Azienda Sanitaria Locale
di Ciriè, Chivasso e Ivrea*



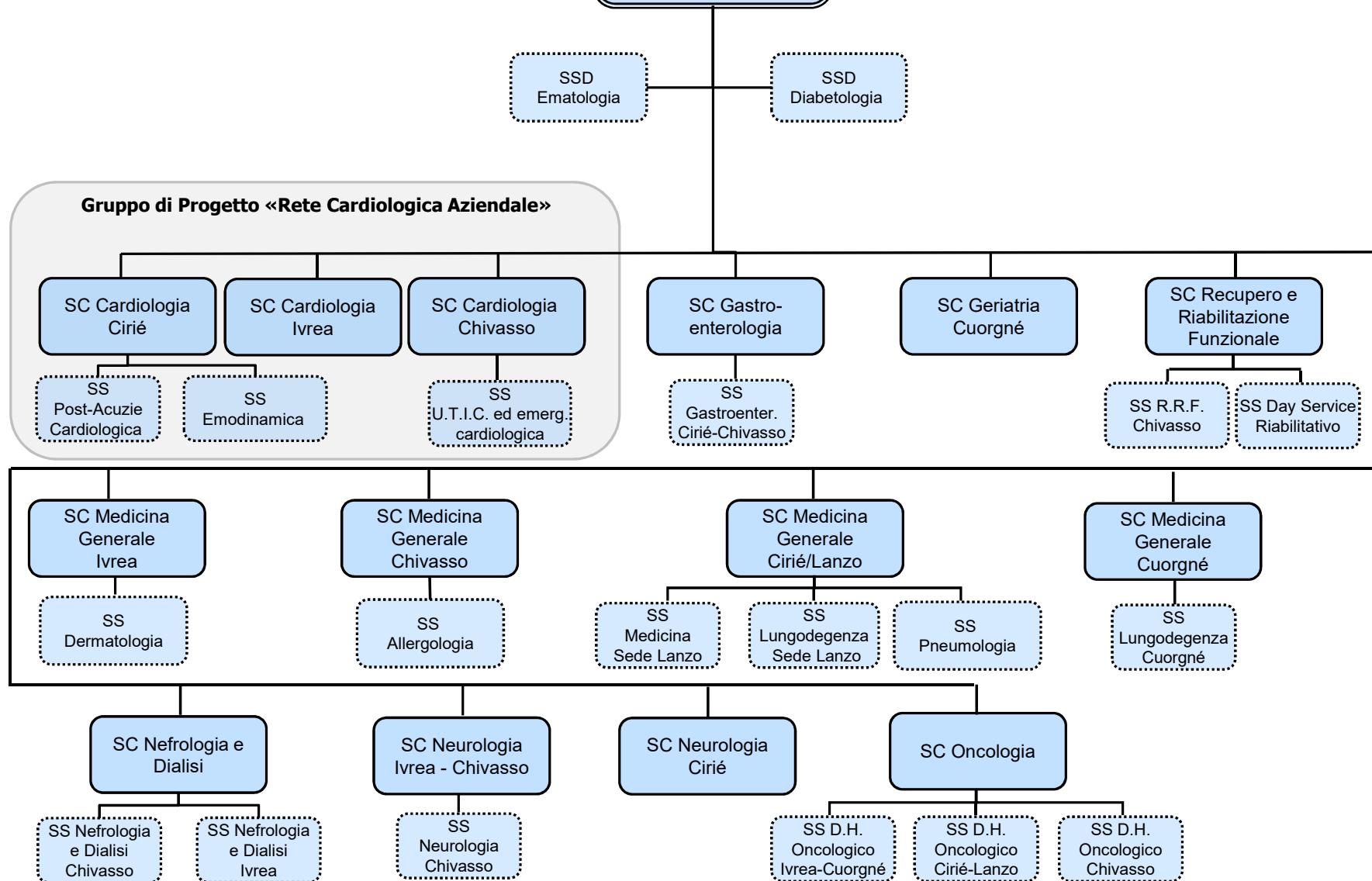
Area Sanitaria

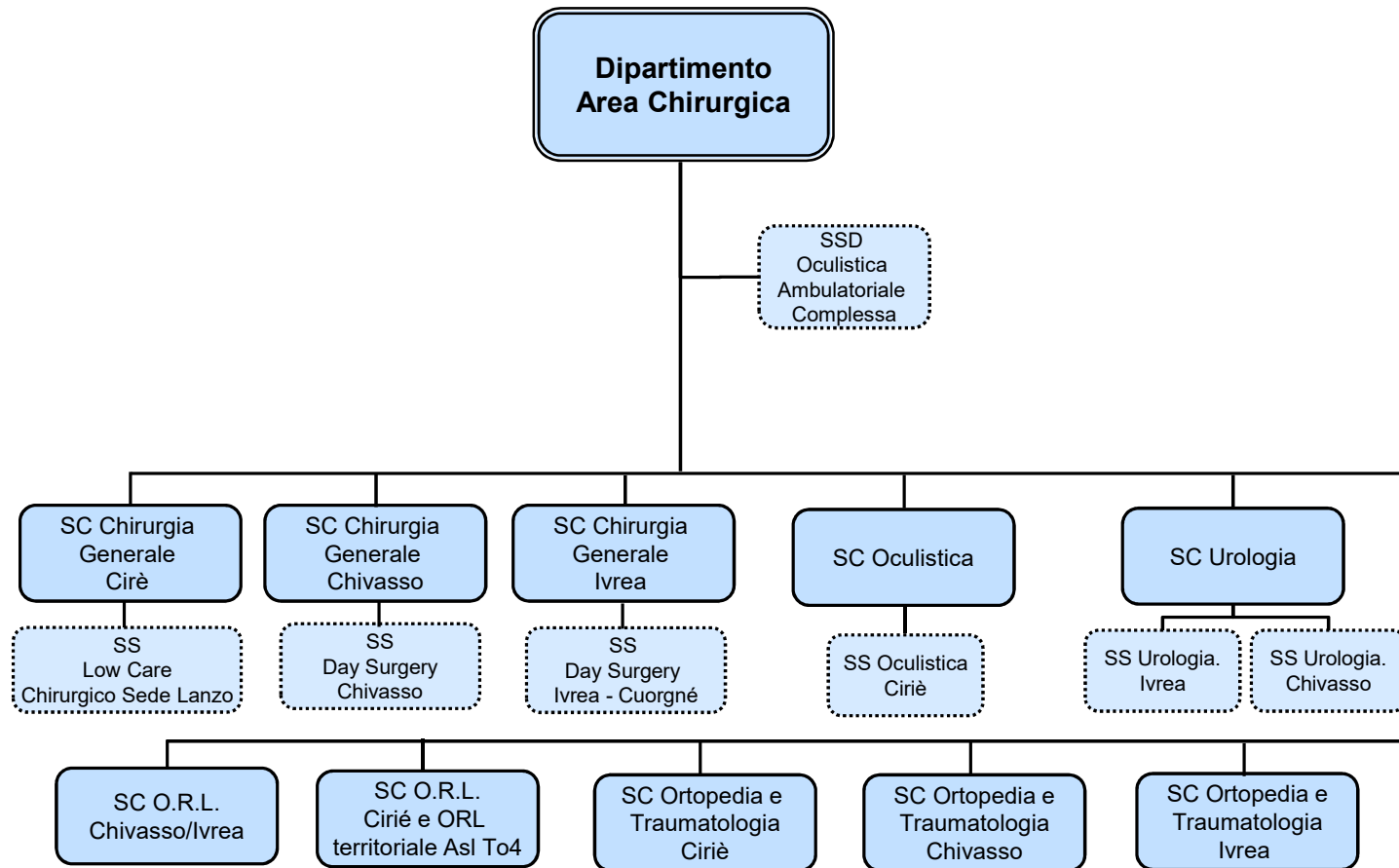


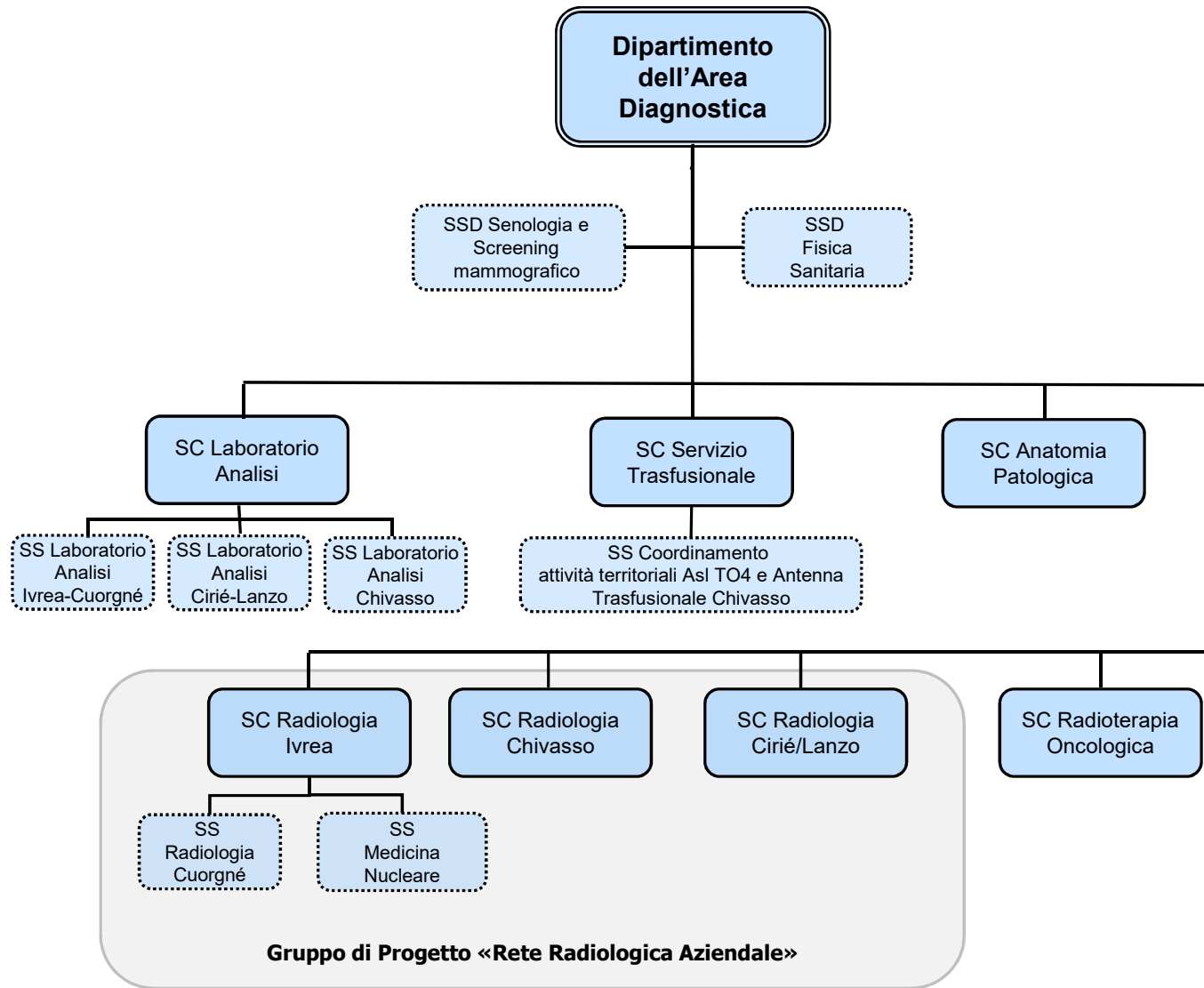


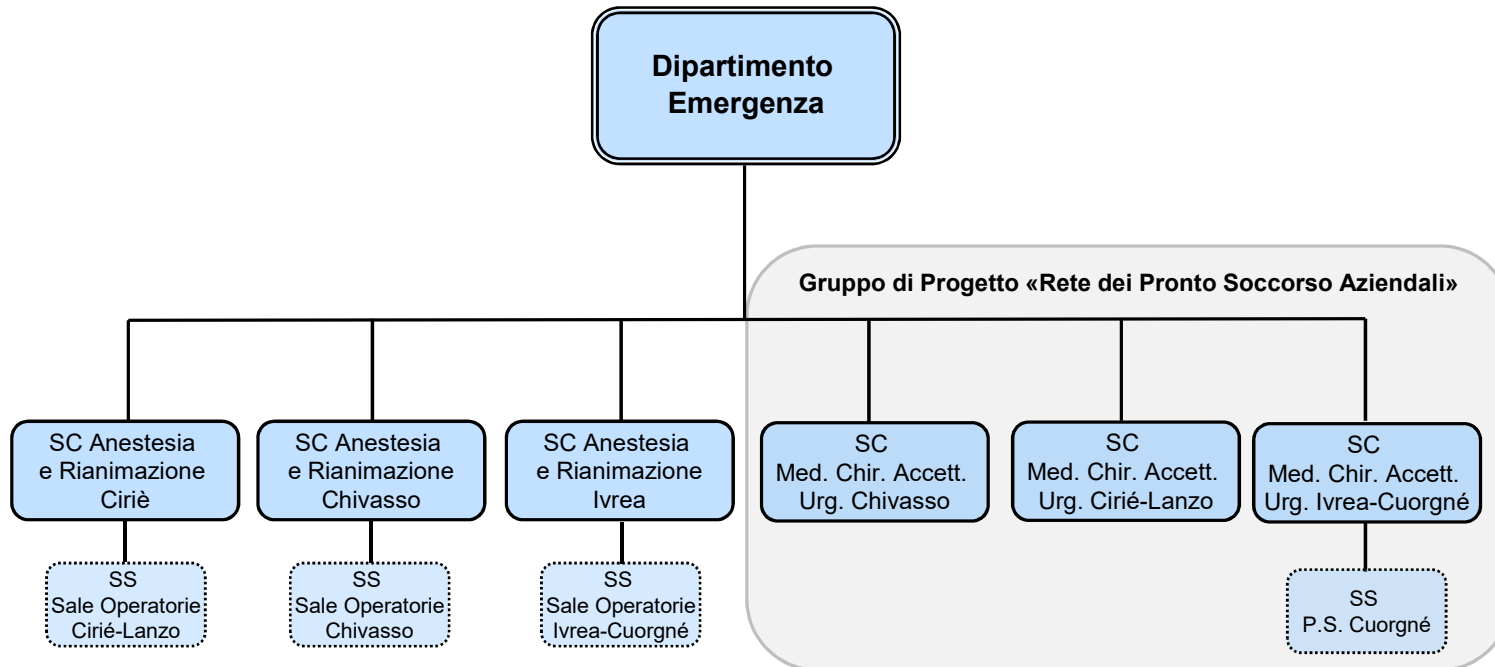
Dipartimento Area Medica

Dipartimento Strutturale



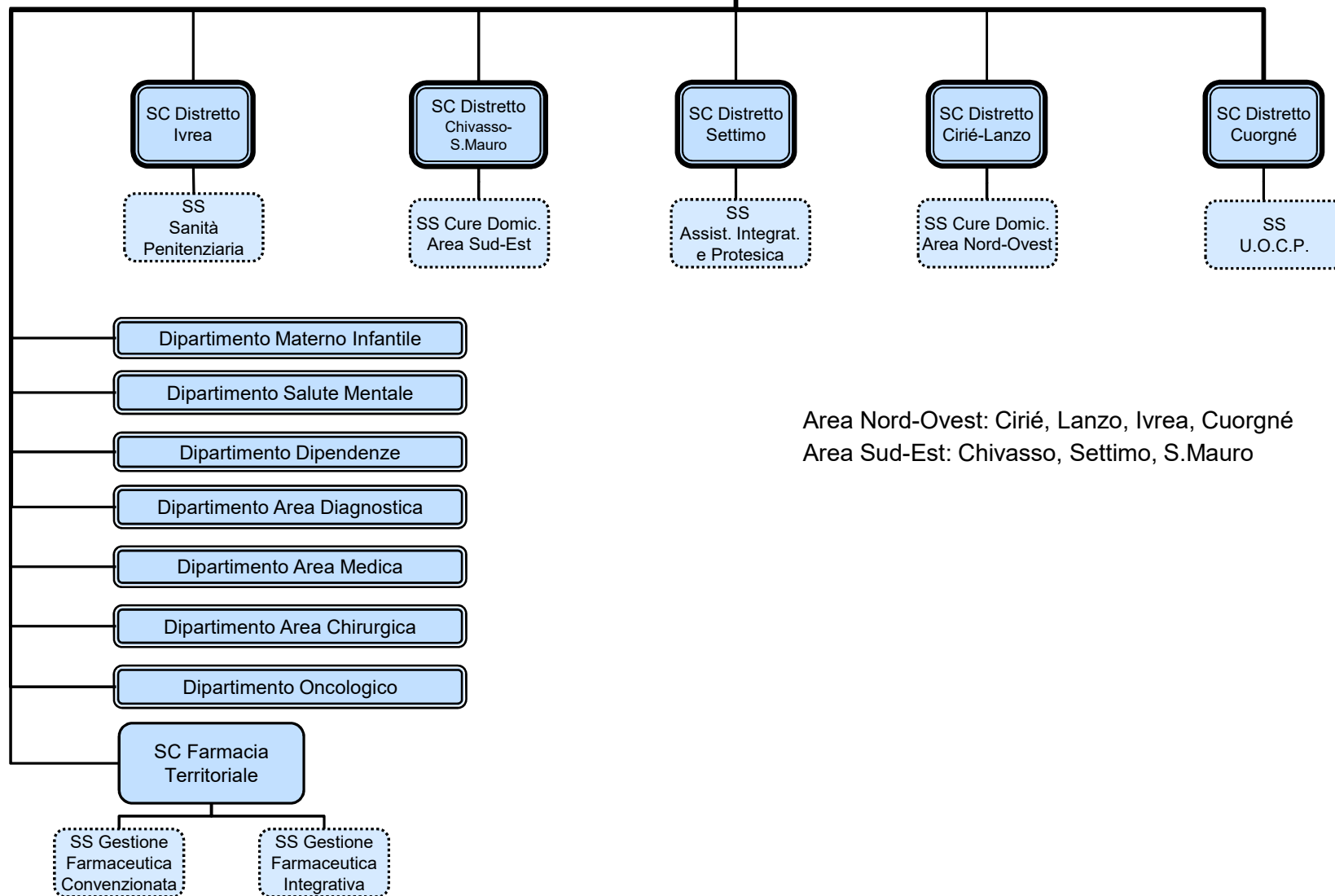




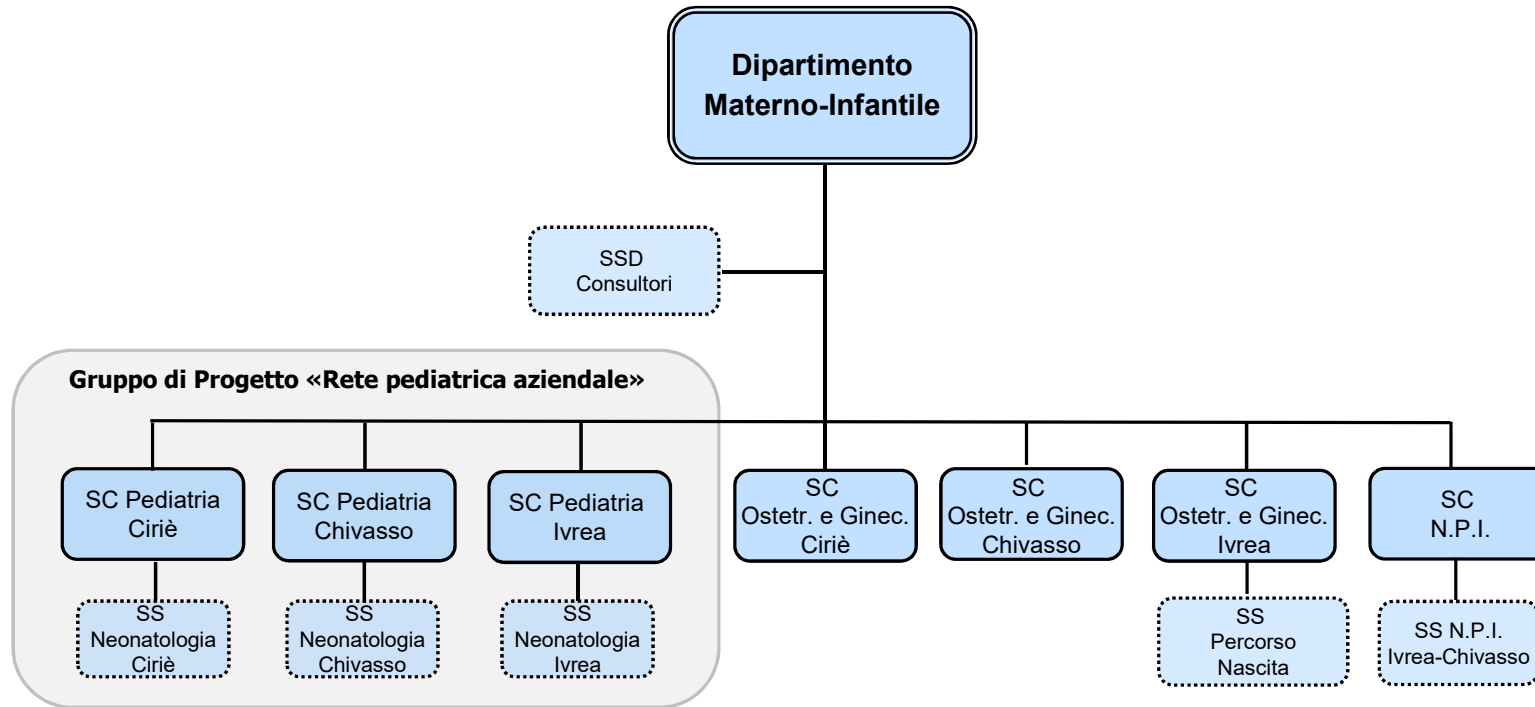


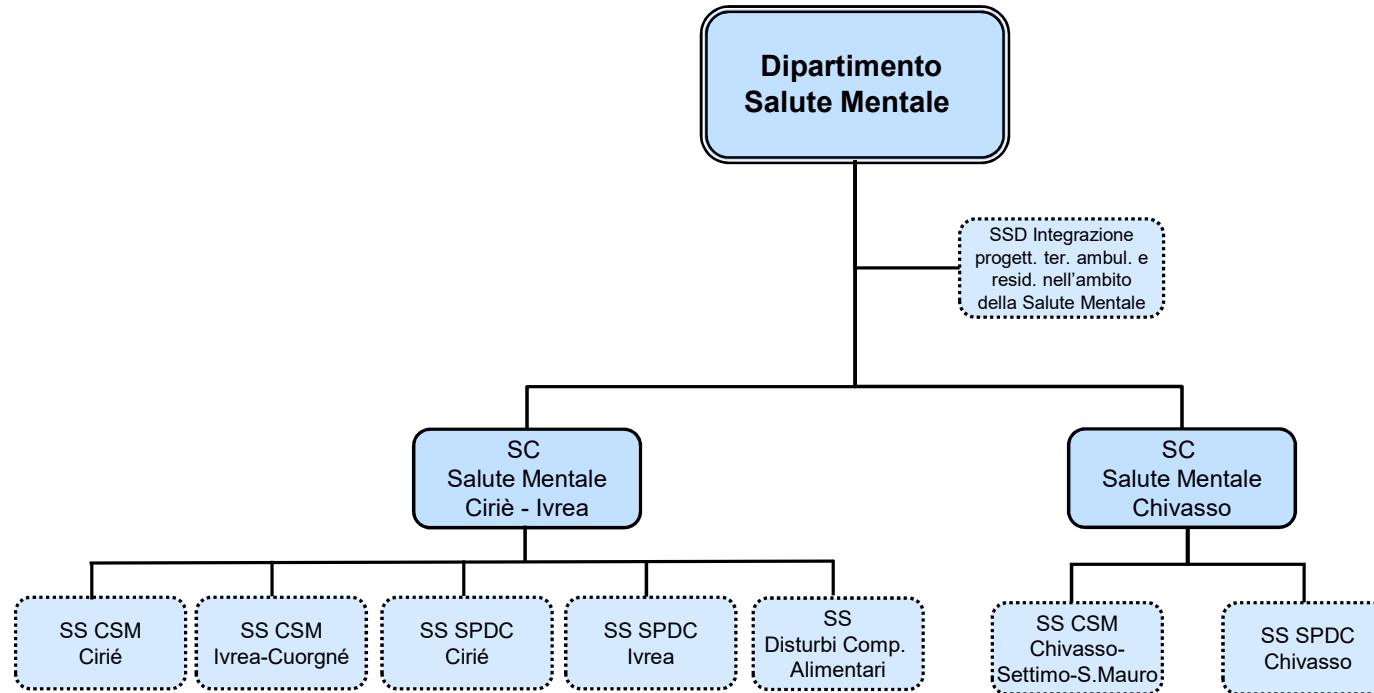
**DIRETTORE
 SANITARIO**

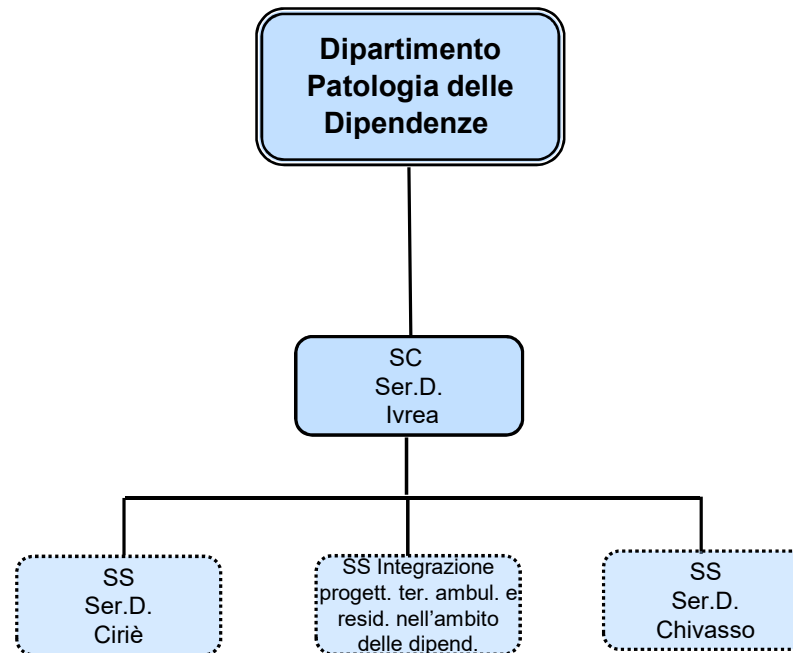
**AREA DISTRETTUALE
 e Dipartimenti con attività in Area Distrettuale**



Area Nord-Ovest: Cirié, Lanzo, Ivrea, Cuorgné
 Area Sud-Est: Chivasso, Settimo, S.Mauro







AREA PREVENZIONE
e Dipartimenti con attività in Area Prevenzione

