
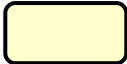
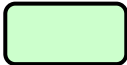



AZIENDA SANITARIA LOCALE T04




ORGANIGRAMMA AZIENDALE

Legenda

-  Dipartimento Strutturale Cirié – Lanzo
-  Dipartimento Strutturale Chivasso
-  Dipartimento Strutturale Ivrea – Cuorné – Castellamonte
-  Dipartimento Strutturale Cirié – Lanzo, Chivasso, Ivrea – Cuorné – Castellamonte

-  Dipartimento Funzionale Cirié – Lanzo
-  Dipartimento Funzionale Chivasso
-  Dipartimento Funzionale Ivrea – Cuorné – Castellamonte
-  Dipartimento Funzionale Cirié – Lanzo, Chivasso, Ivrea – Cuorné – Castellamonte

-  Struttura Complessa Cirié – Lanzo
-  Struttura Complessa Chivasso
-  Struttura Complessa Ivrea – Cuorné – Castellamonte
-  Struttura Complessa Cirié – Lanzo, Chivasso, Ivrea – Cuorné – Castellamonte

-  Struttura Complessa Chivasso, Ivrea – Cuorné – Castellamonte
-  Struttura Complessa Cirié – Lanzo, Chivasso
-  Struttura Complessa Cirié – Lanzo, Ivrea – Cuorné – Castellamonte



Struttura Semplice a Valenza Dipartimentale Cirié – Lanzo



Struttura Semplice a Valenza Dipartimentale Chivasso



Struttura Semplice a Valenza Dipartimentale Ivrea – Cuorné – Castellamonte



Struttura Semplice a Valenza Dipartimentale Cirié – Lanzo, Chivasso, Ivrea – Cuorné – Castellamonte



Struttura Semplice di Struttura Complessa Cirié – Lanzo



Struttura Semplice di Struttura Complessa Chivasso



Struttura Semplice di Struttura Complessa Ivrea – Cuorné – Castellamonte



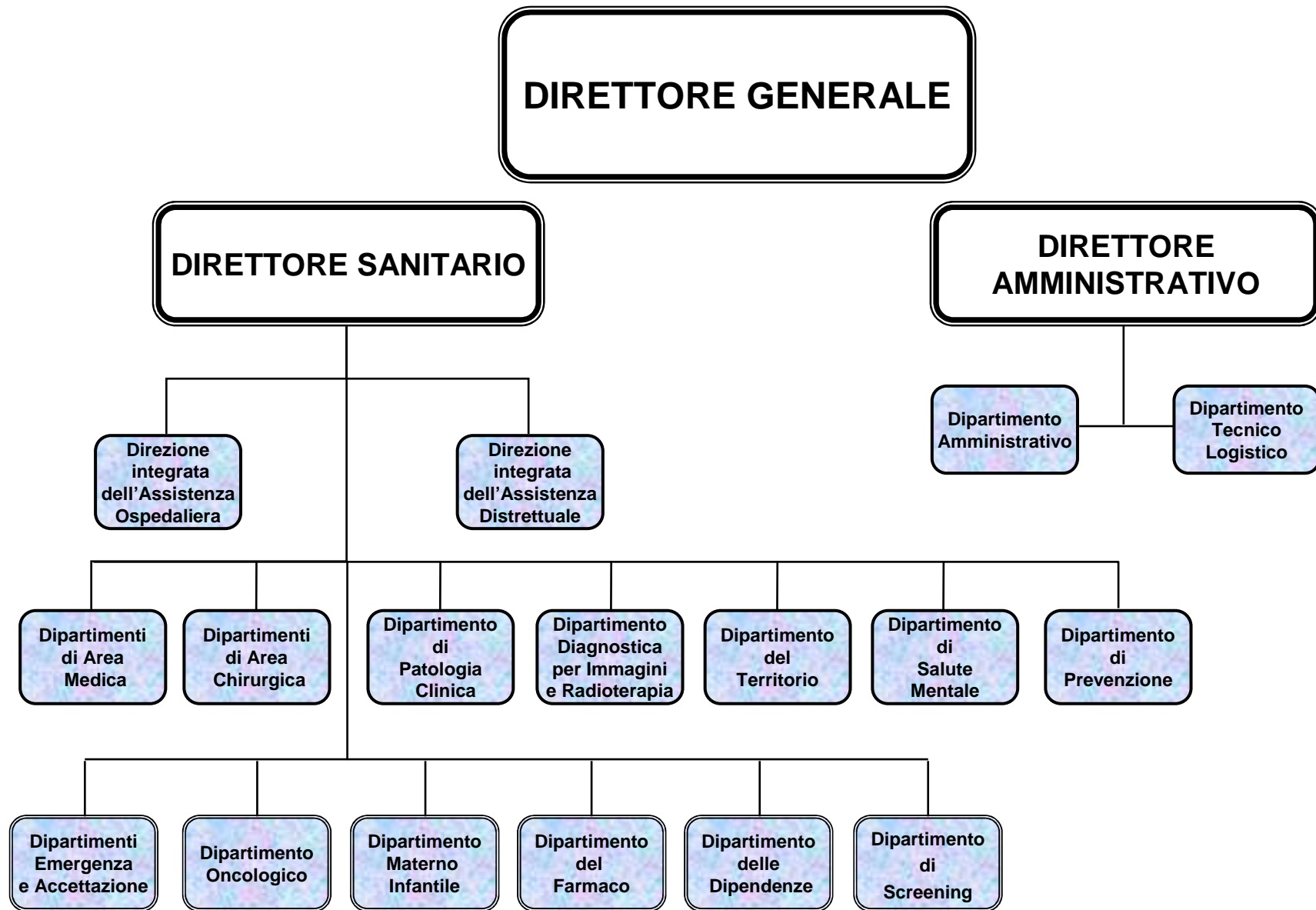
Struttura Semplice di Struttura Complessa Cirié – Lanzo, Chivasso, Ivrea – Cuorné – Castellamonte



Struttura Semplice di Struttura Complessa Cirié – Lanzo, Chivasso



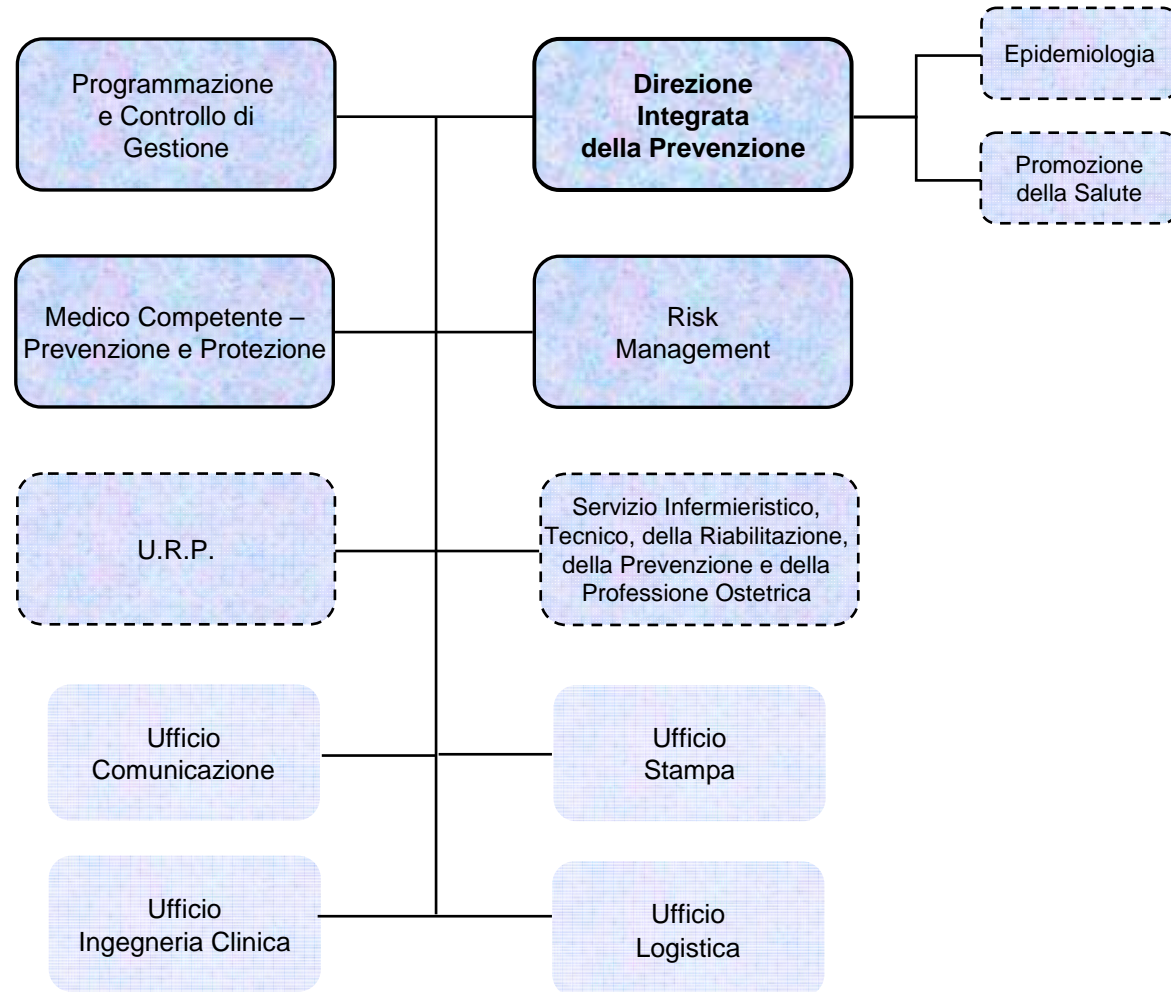
Ufficio

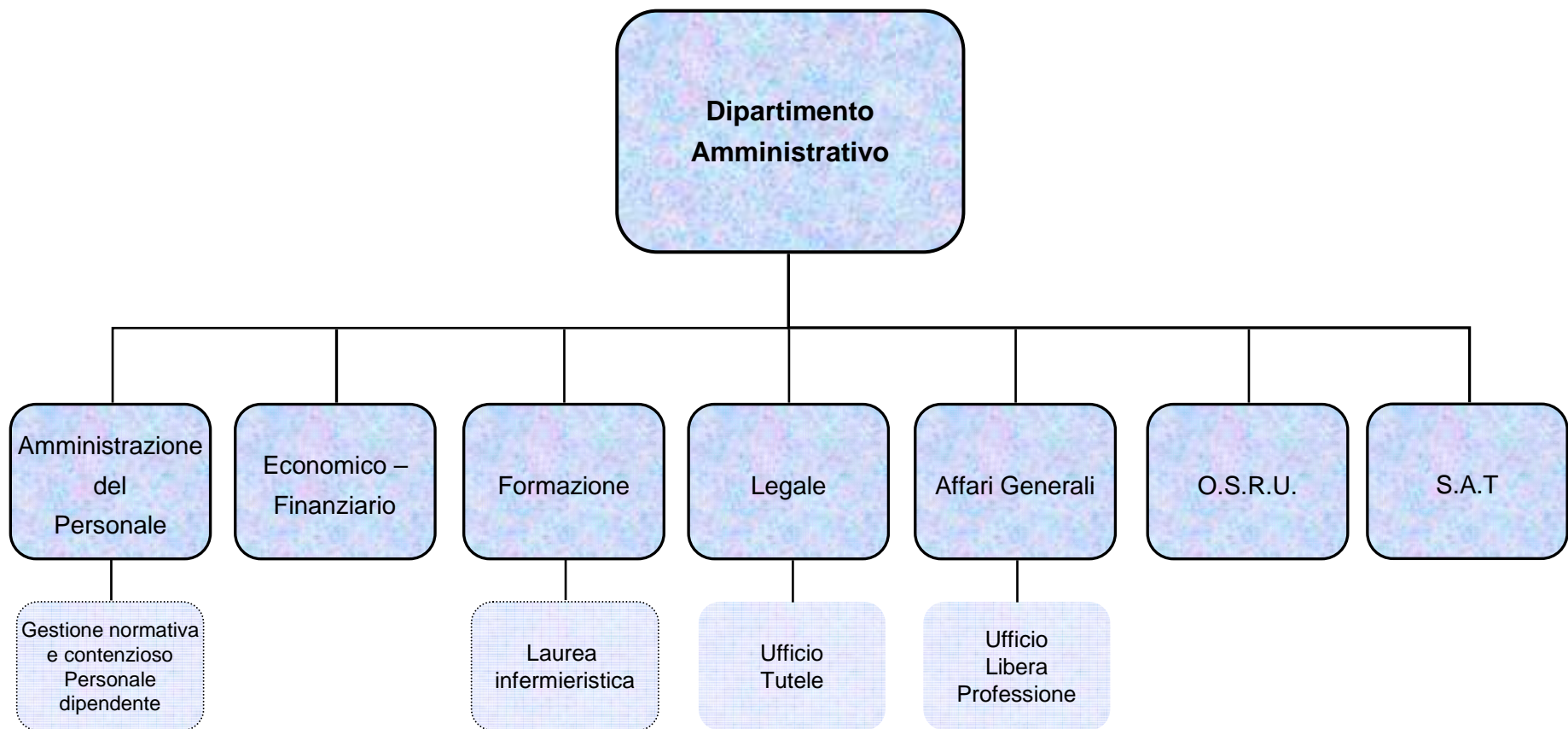


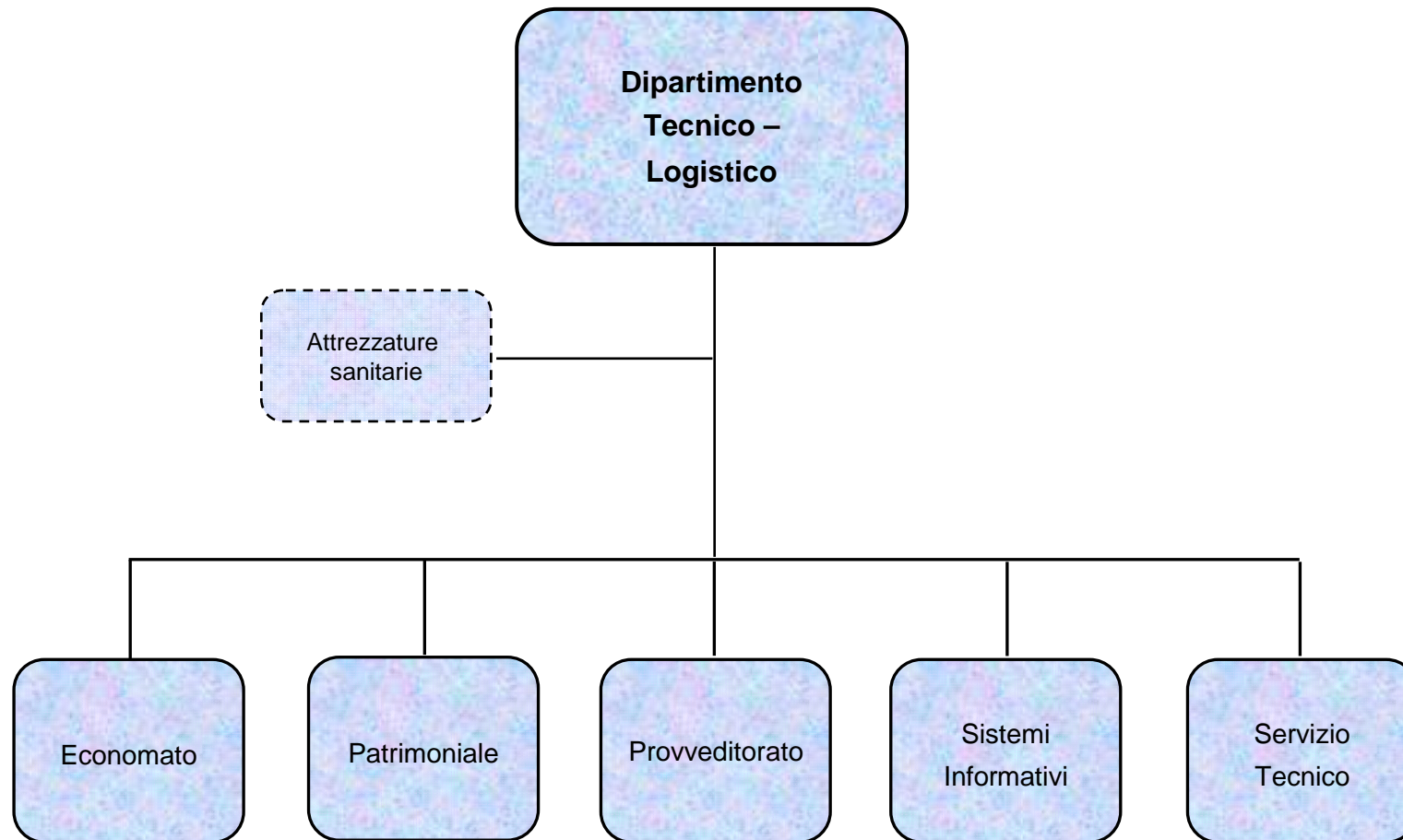
LIVELLO CENTRALE

DIREZIONE GENERALE

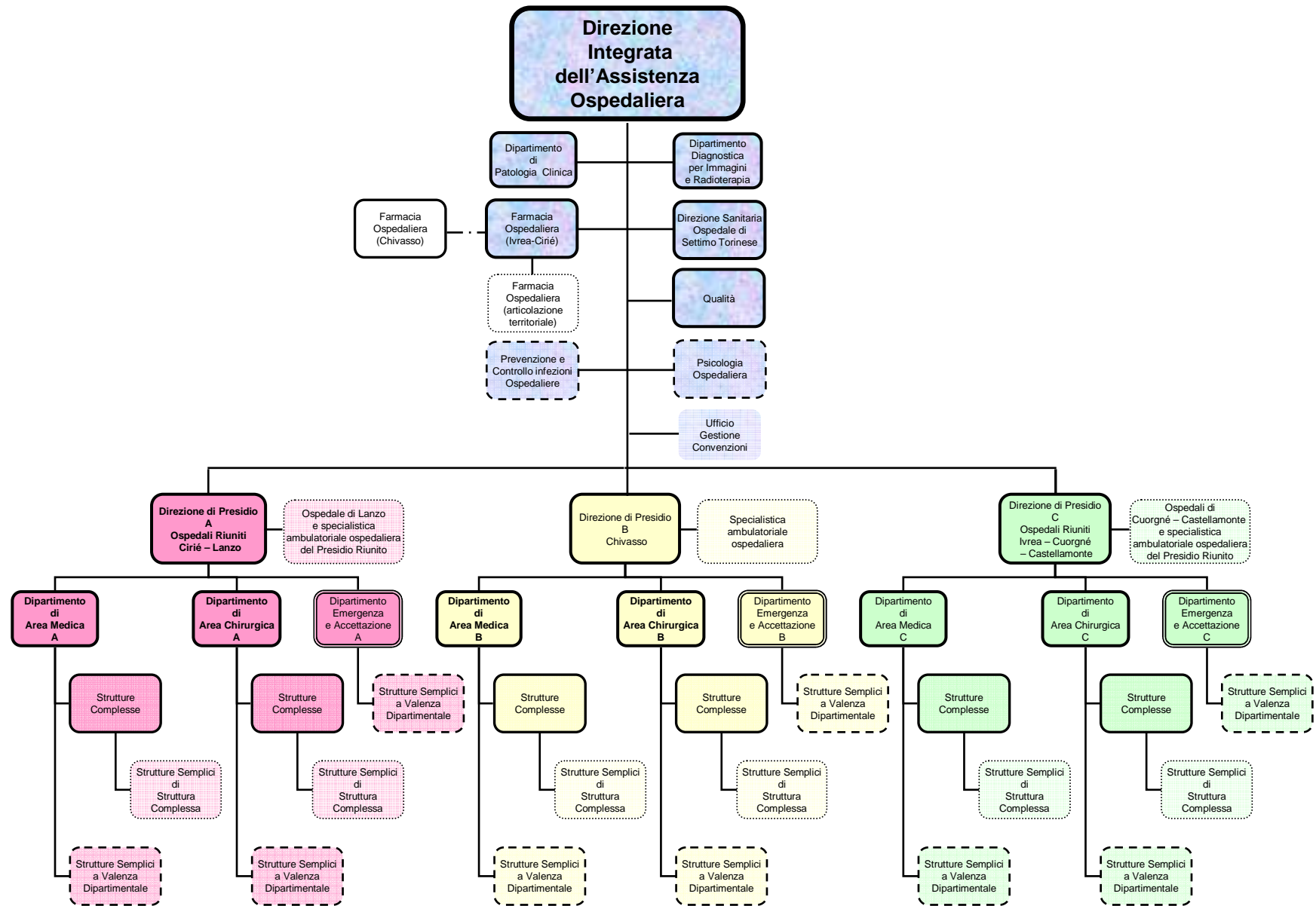
STAFF



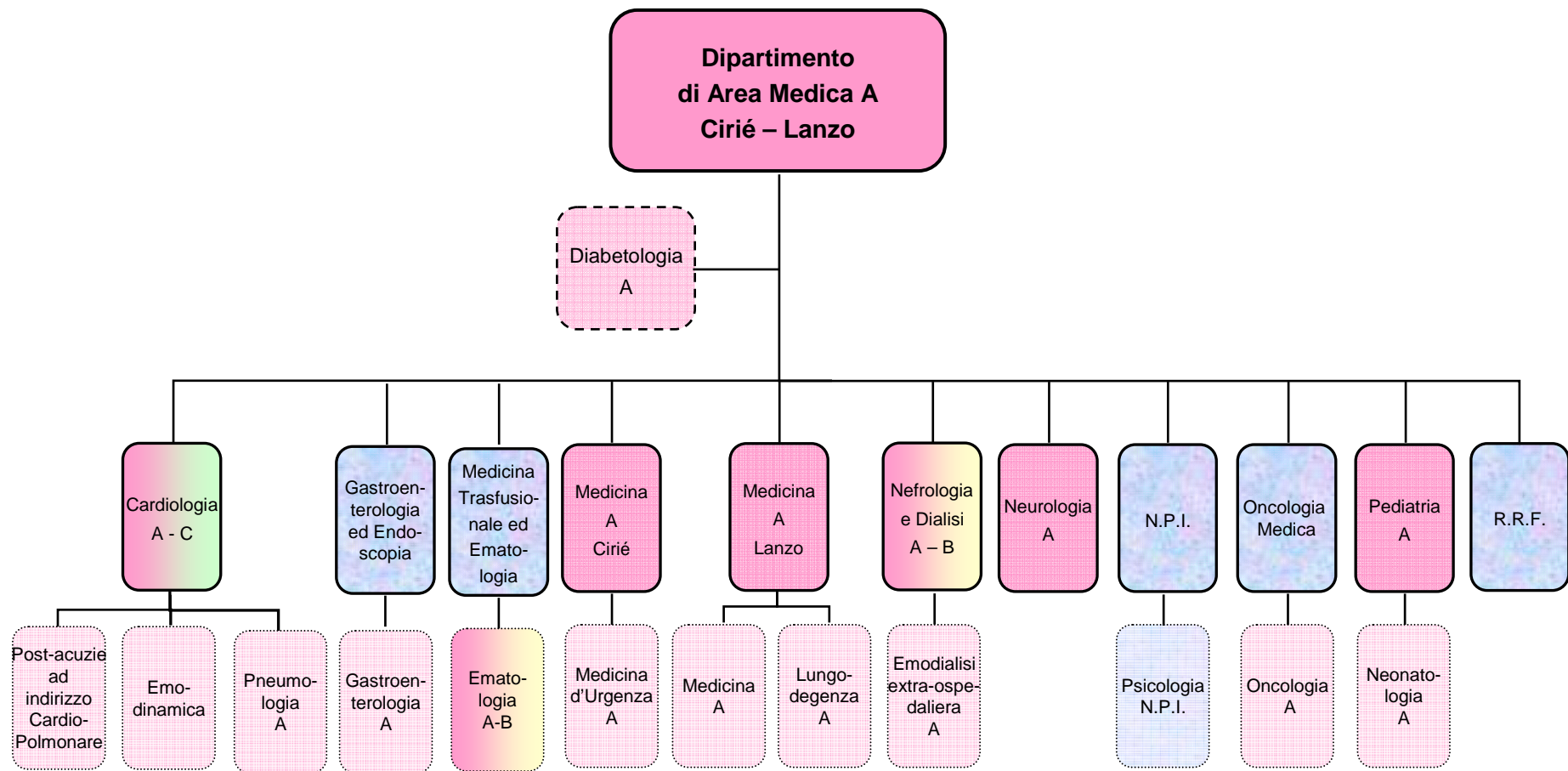


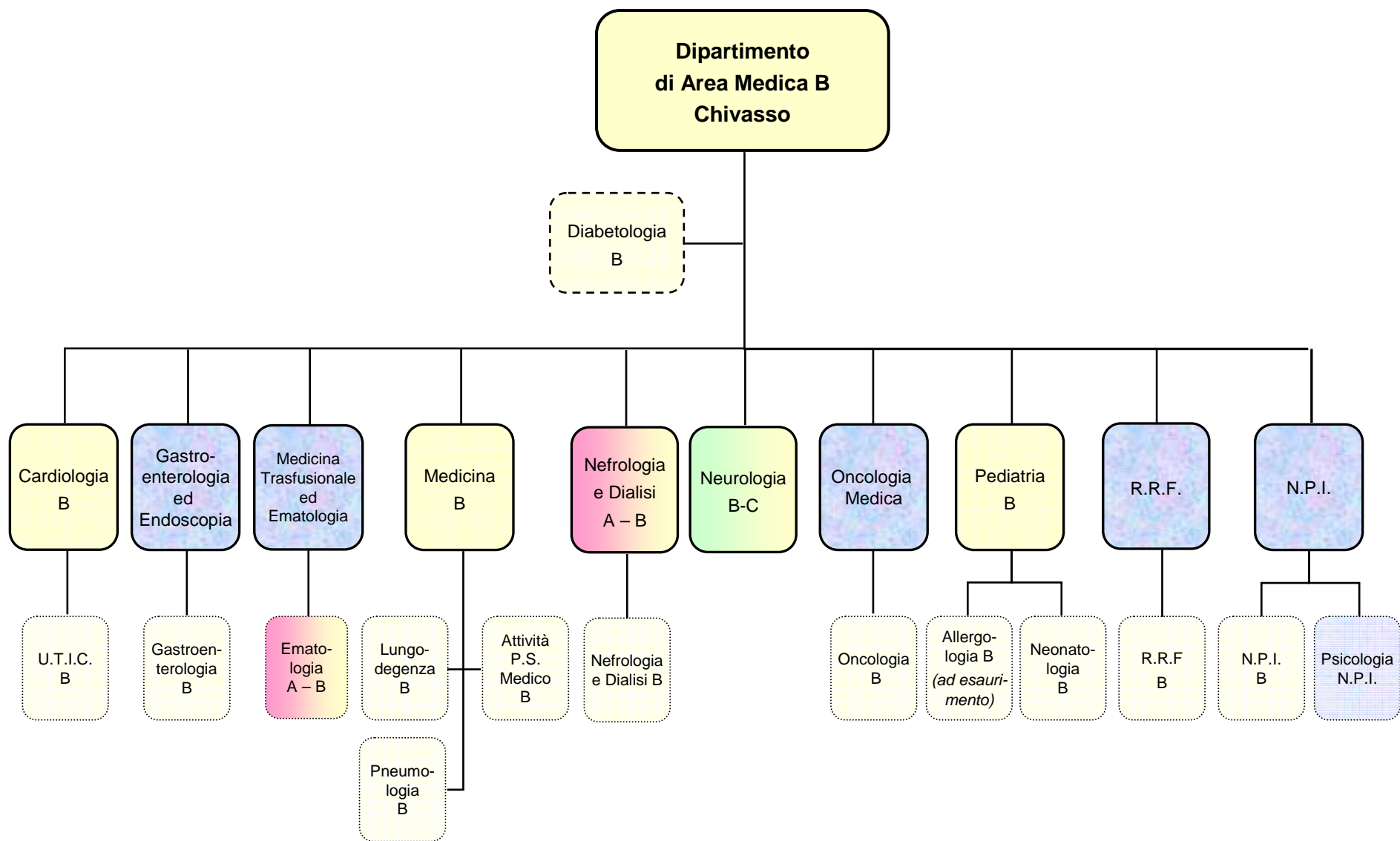


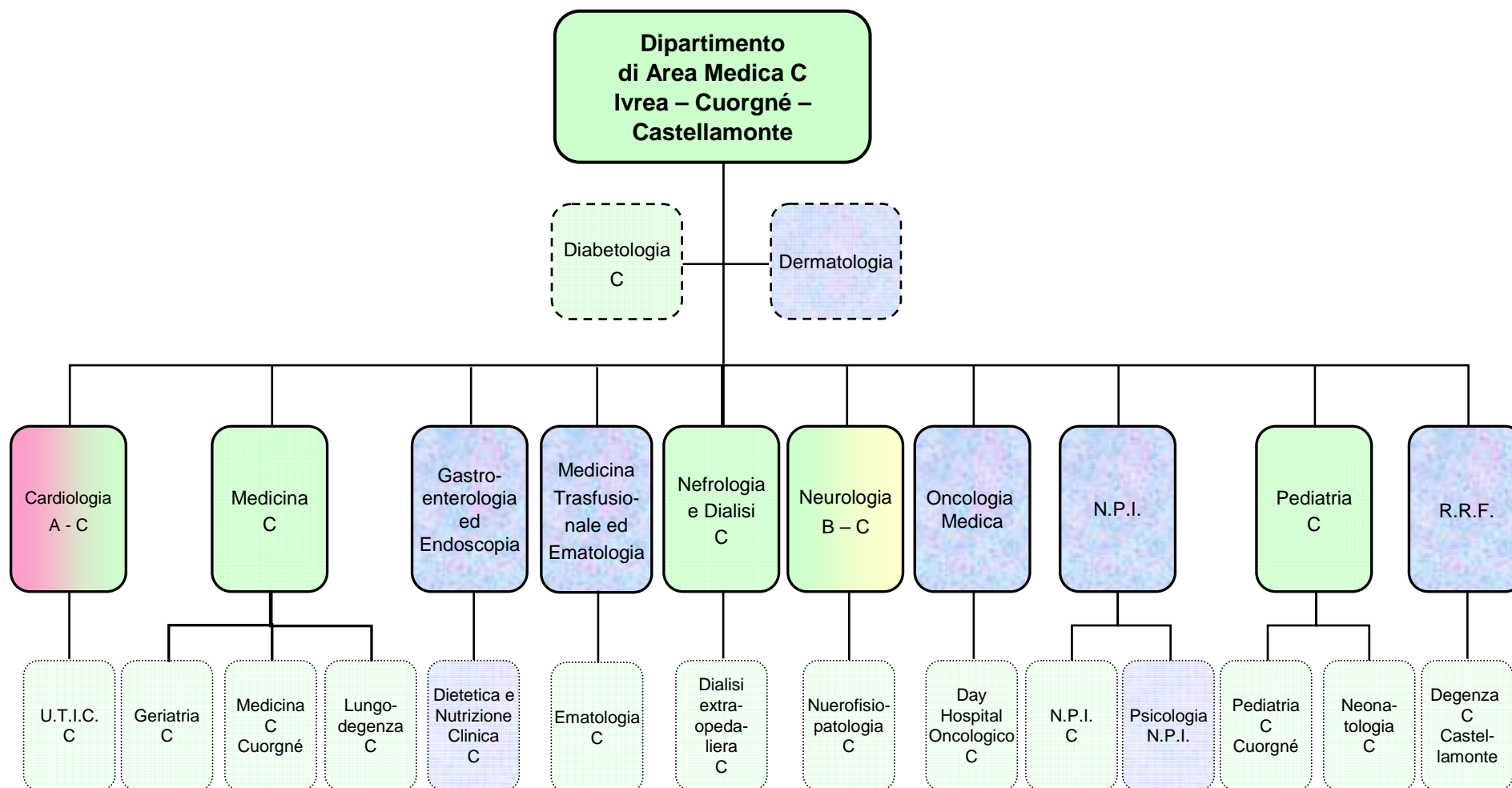
LIVELLO OSPEDALIERO

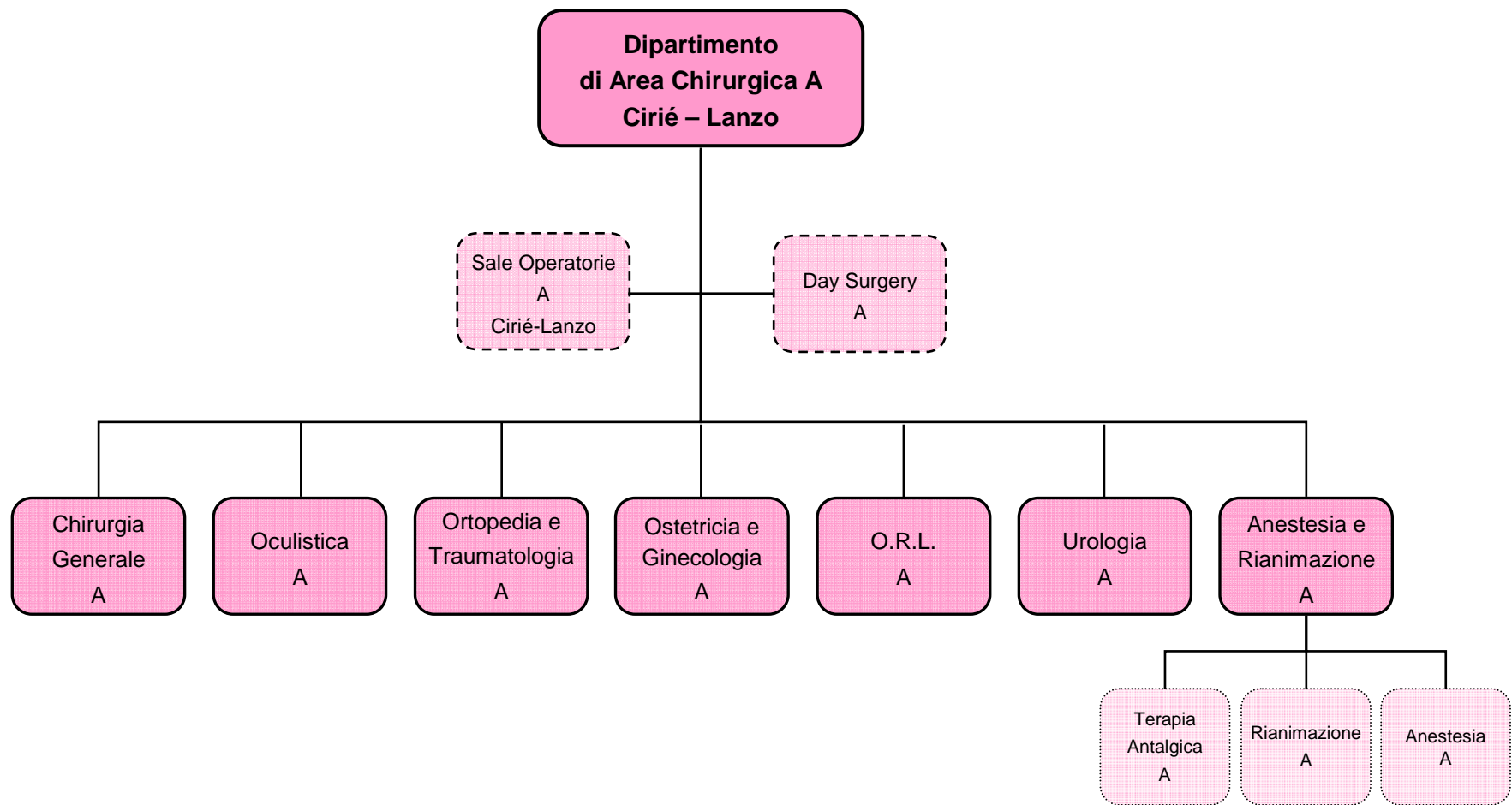


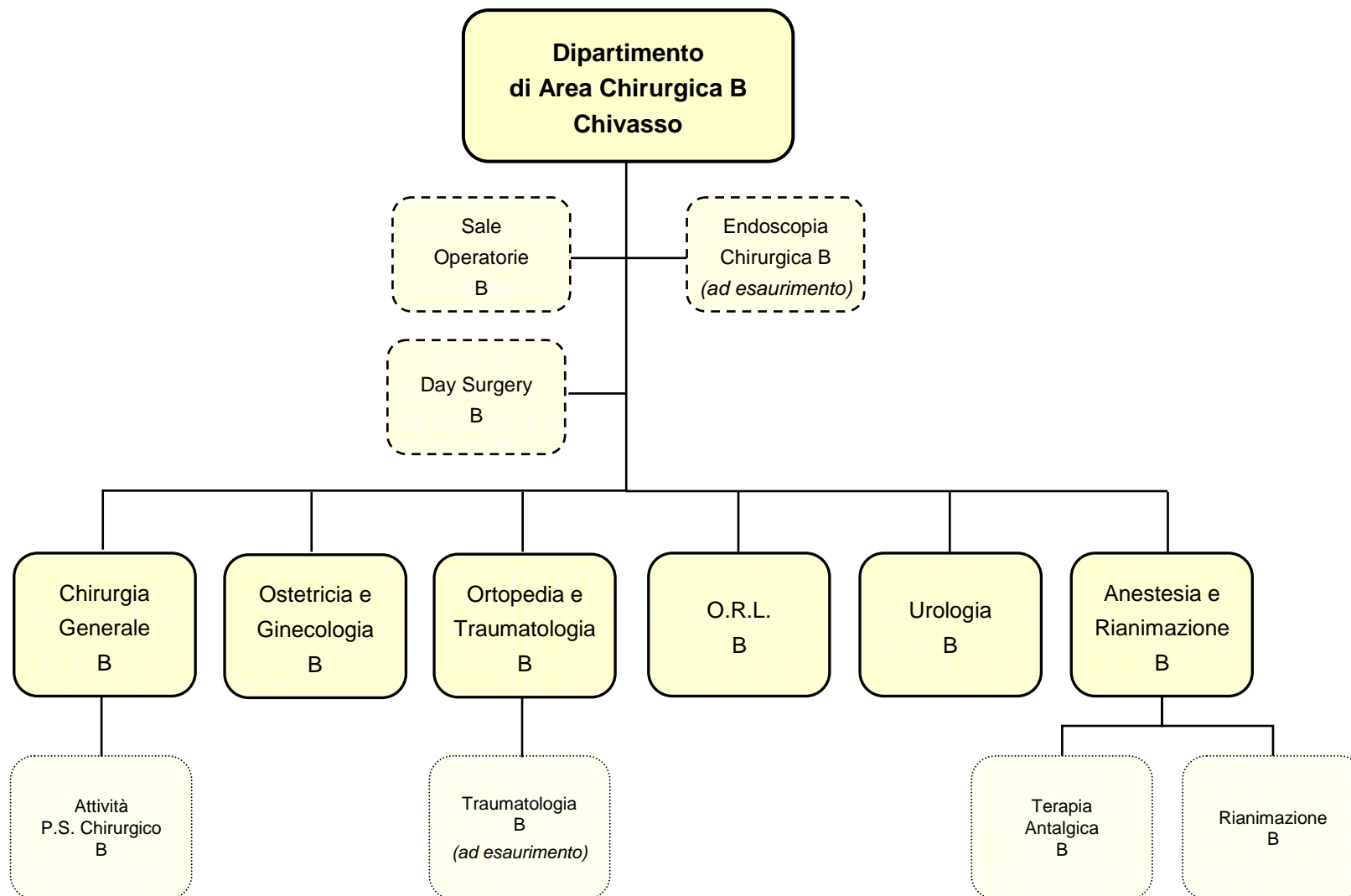
DIPARTIMENTI STRUTTURALI

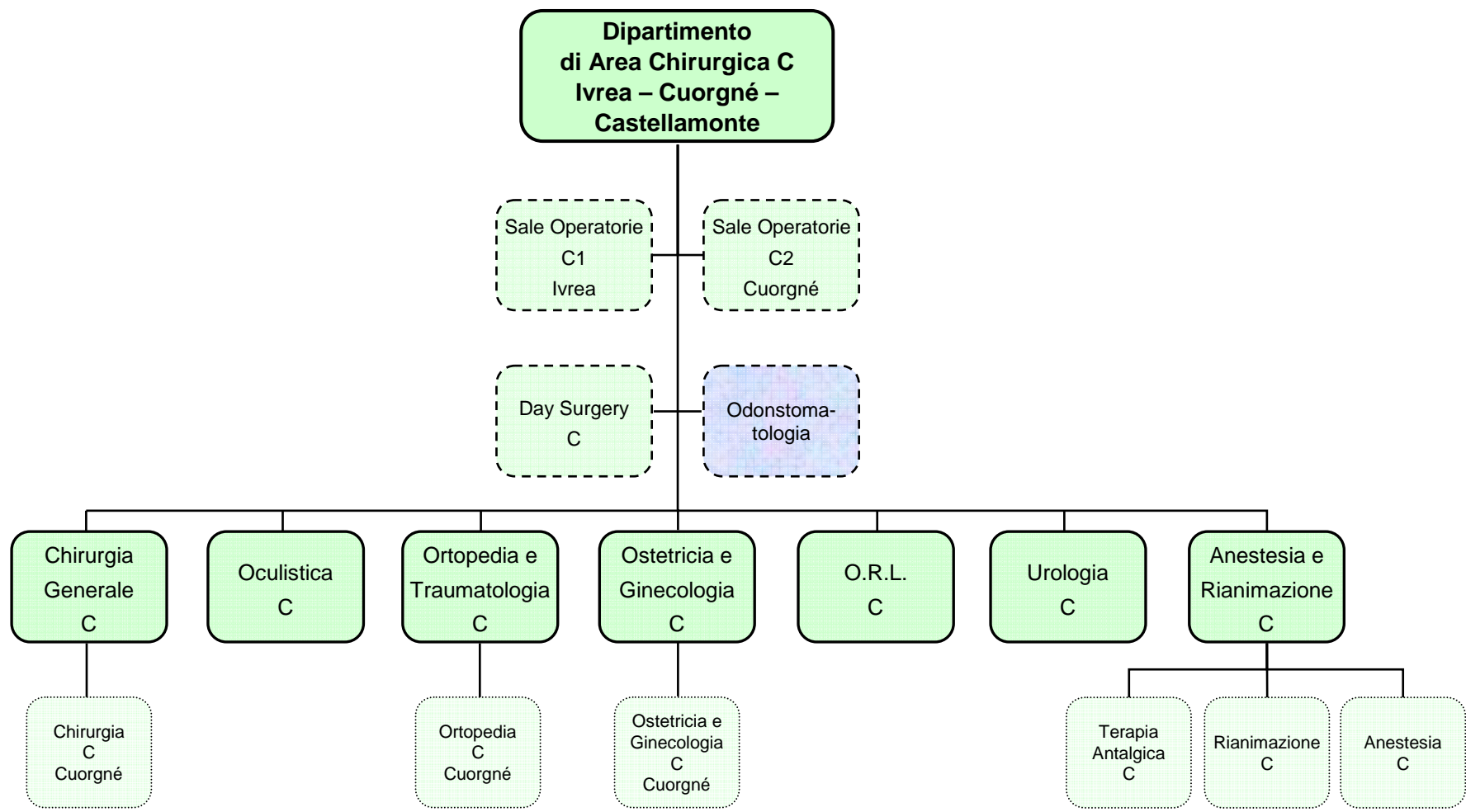


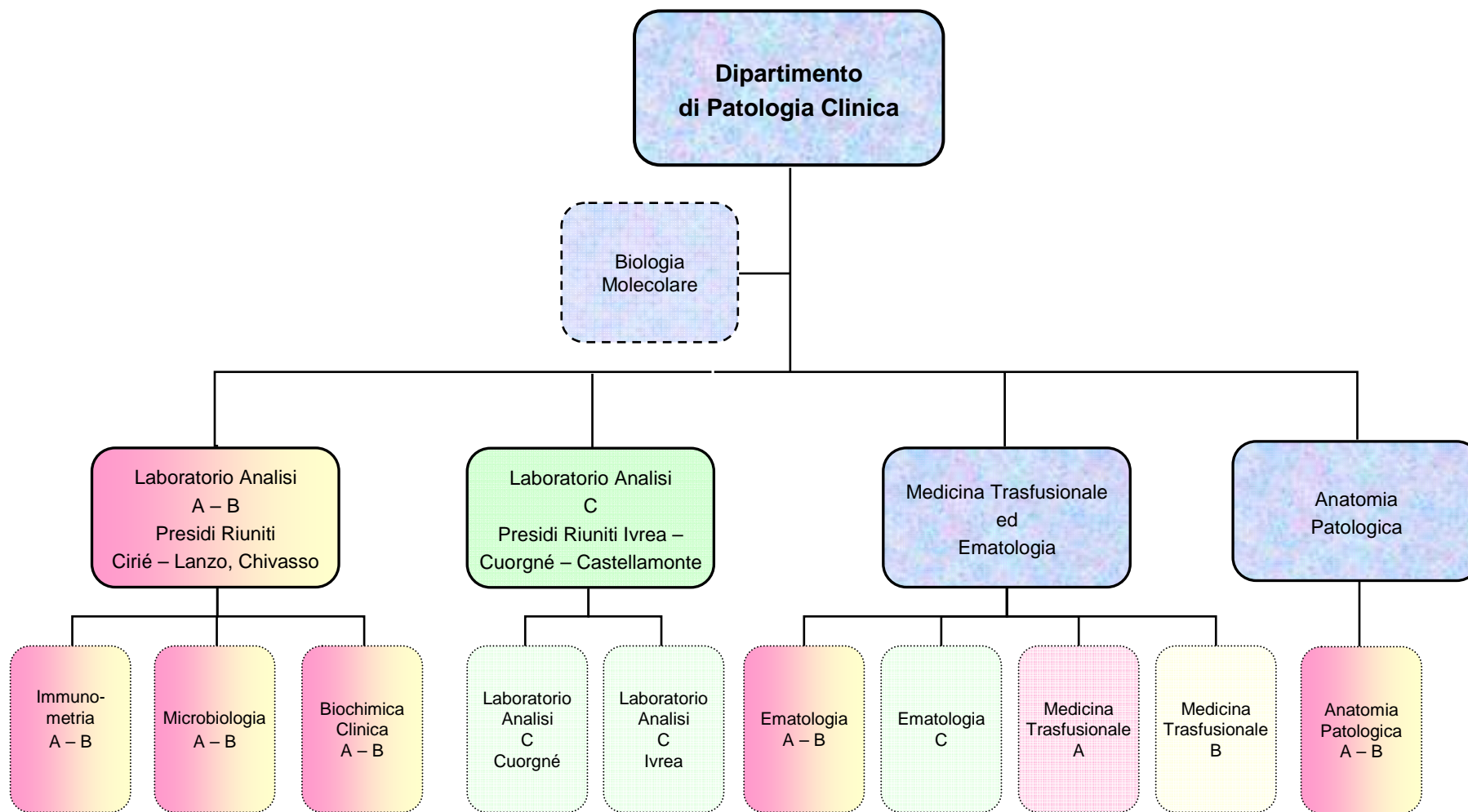




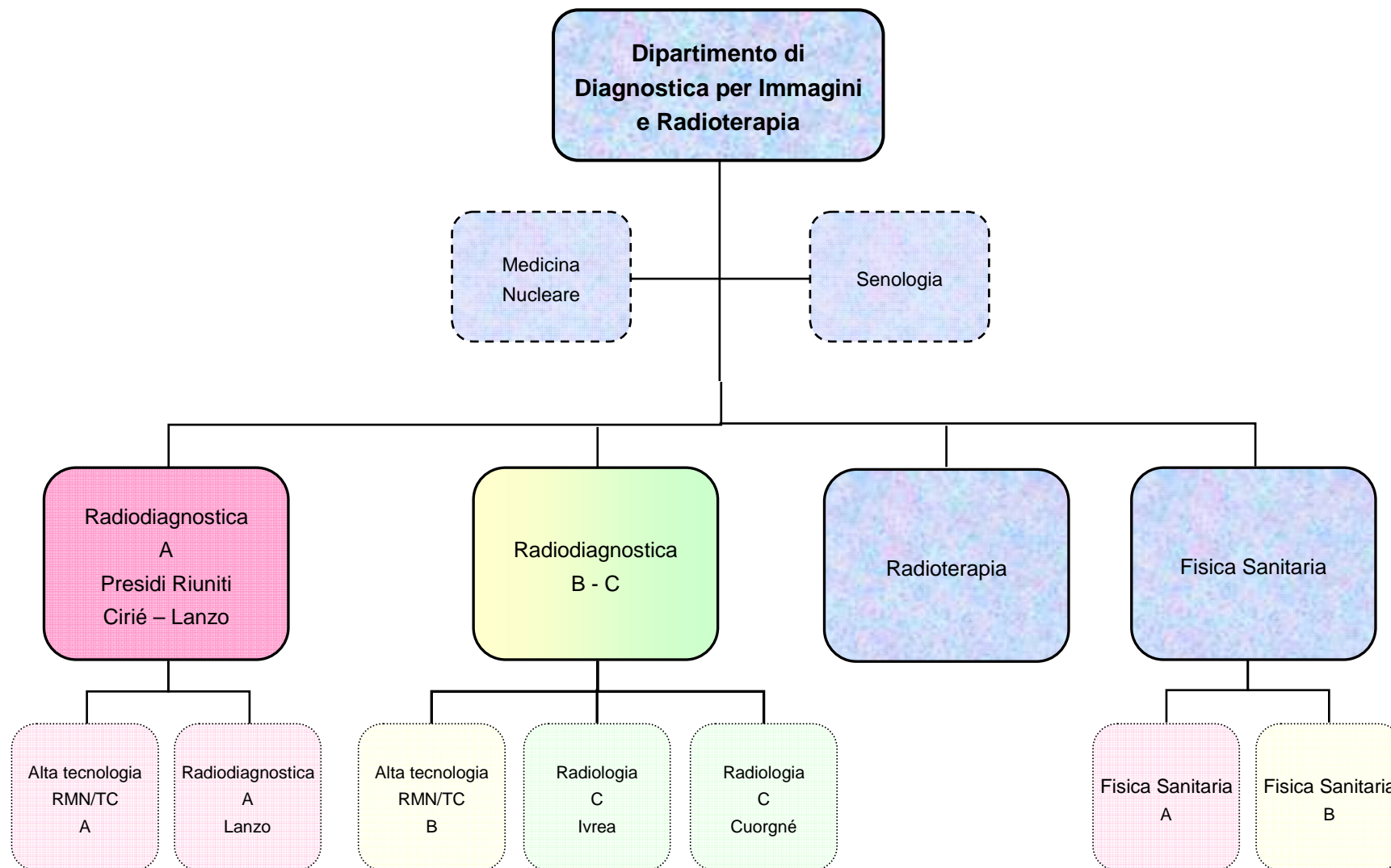








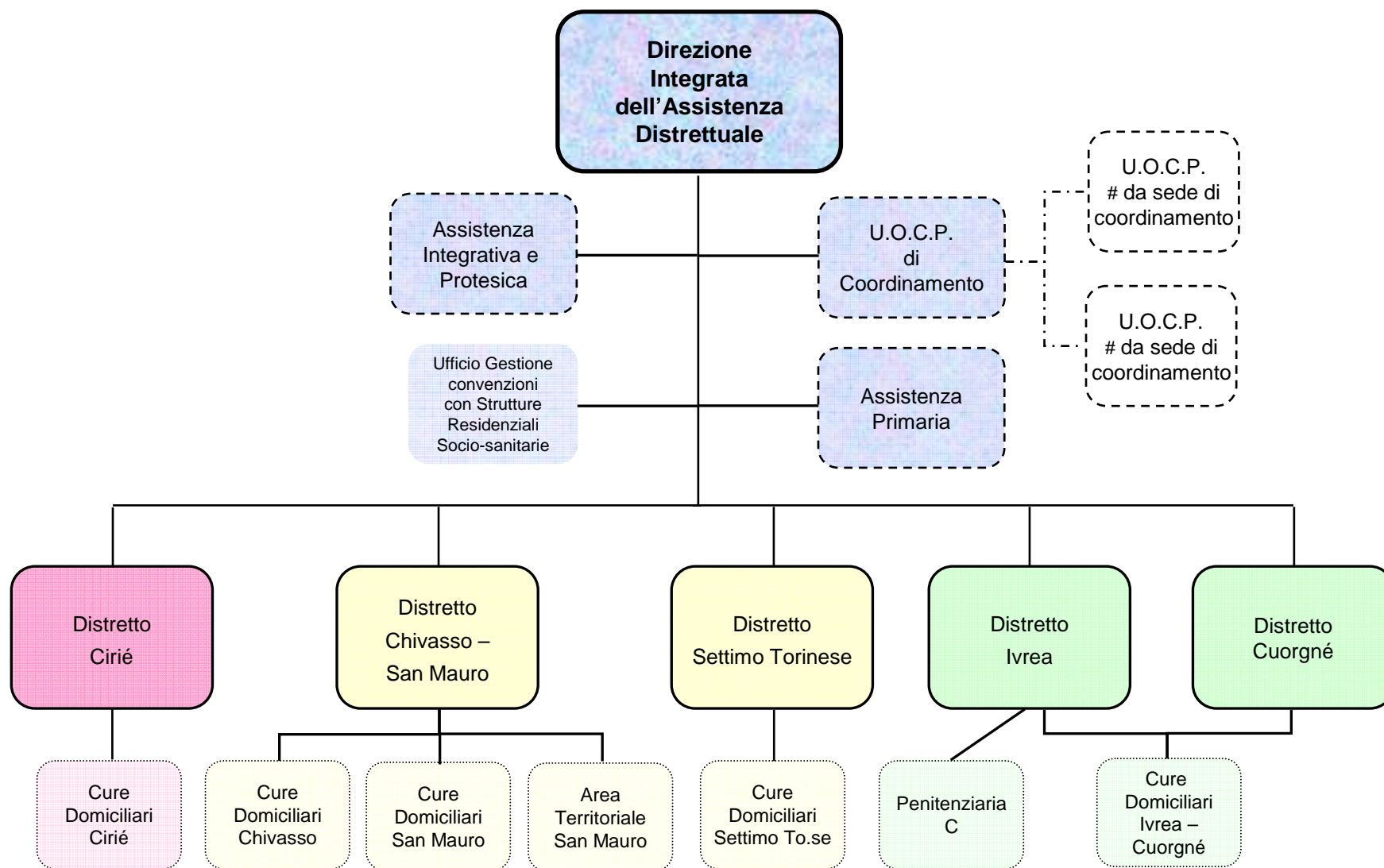
* delle due S.C. Laboratorio A – B e C, una è prevista ad esaurimento con successiva trasformazione in Struttura Semplice.

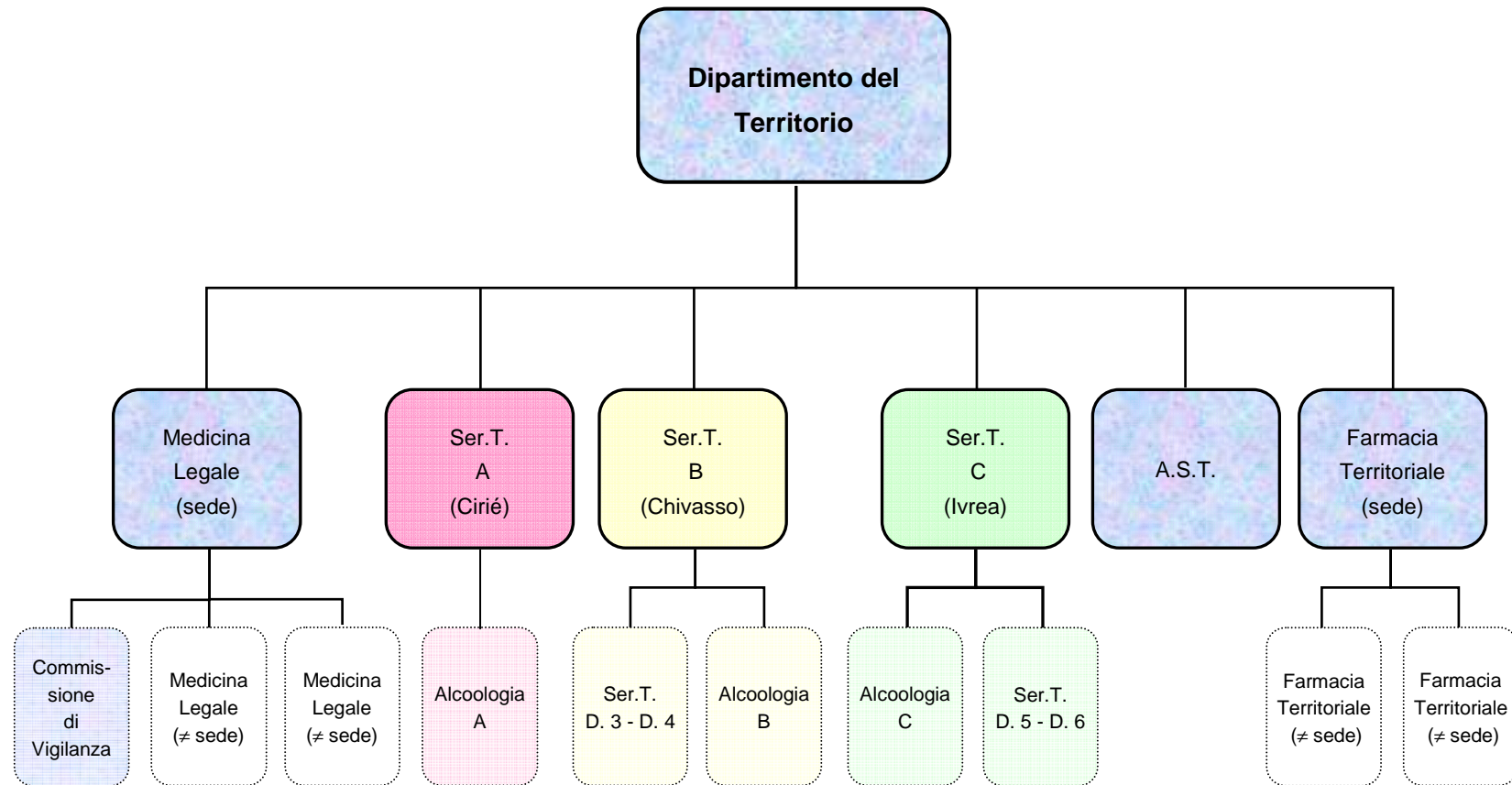


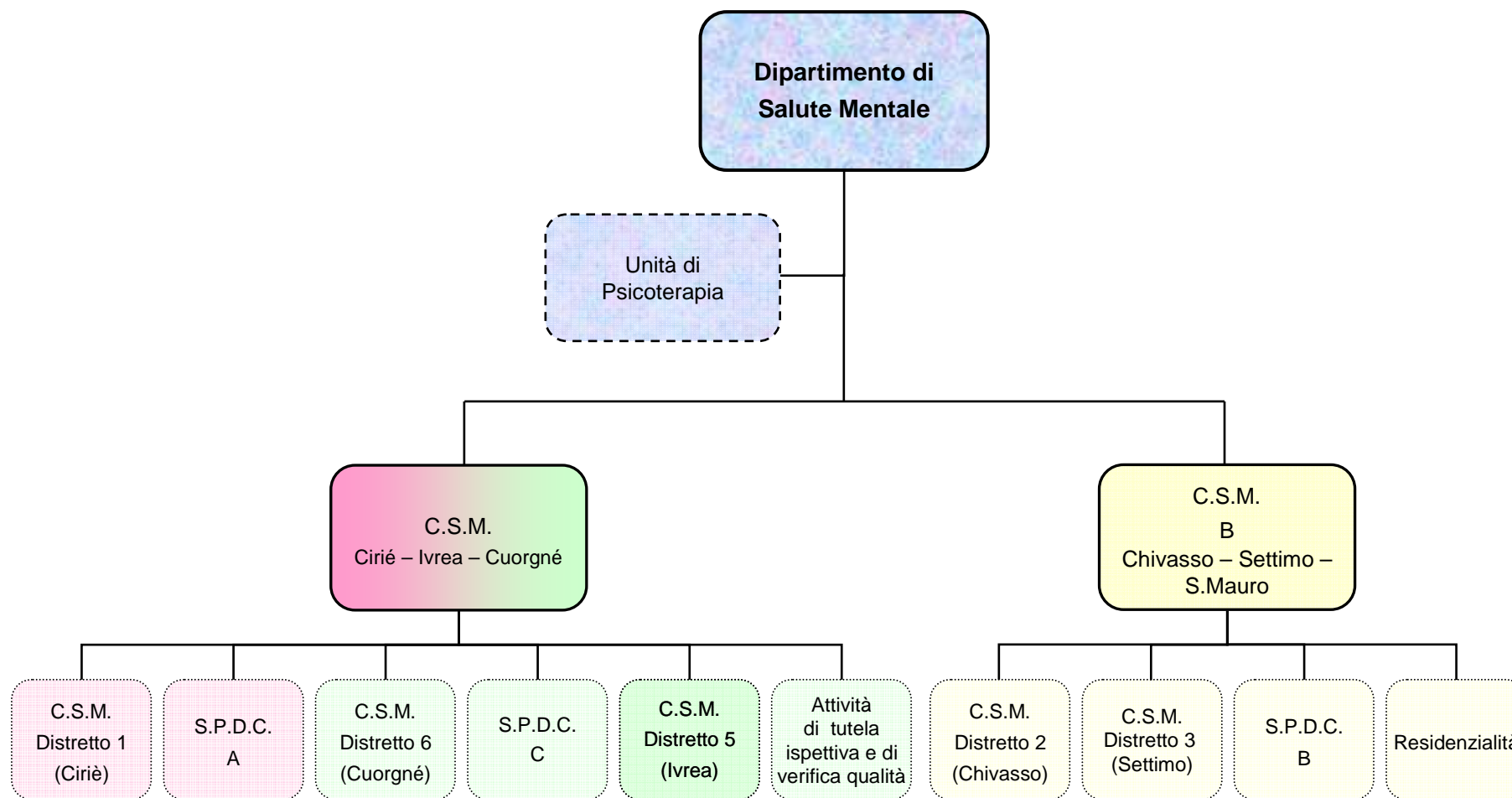


**LIVELLO
TERRITORIALE**

DIPARTIMENTI STRUTTURALI

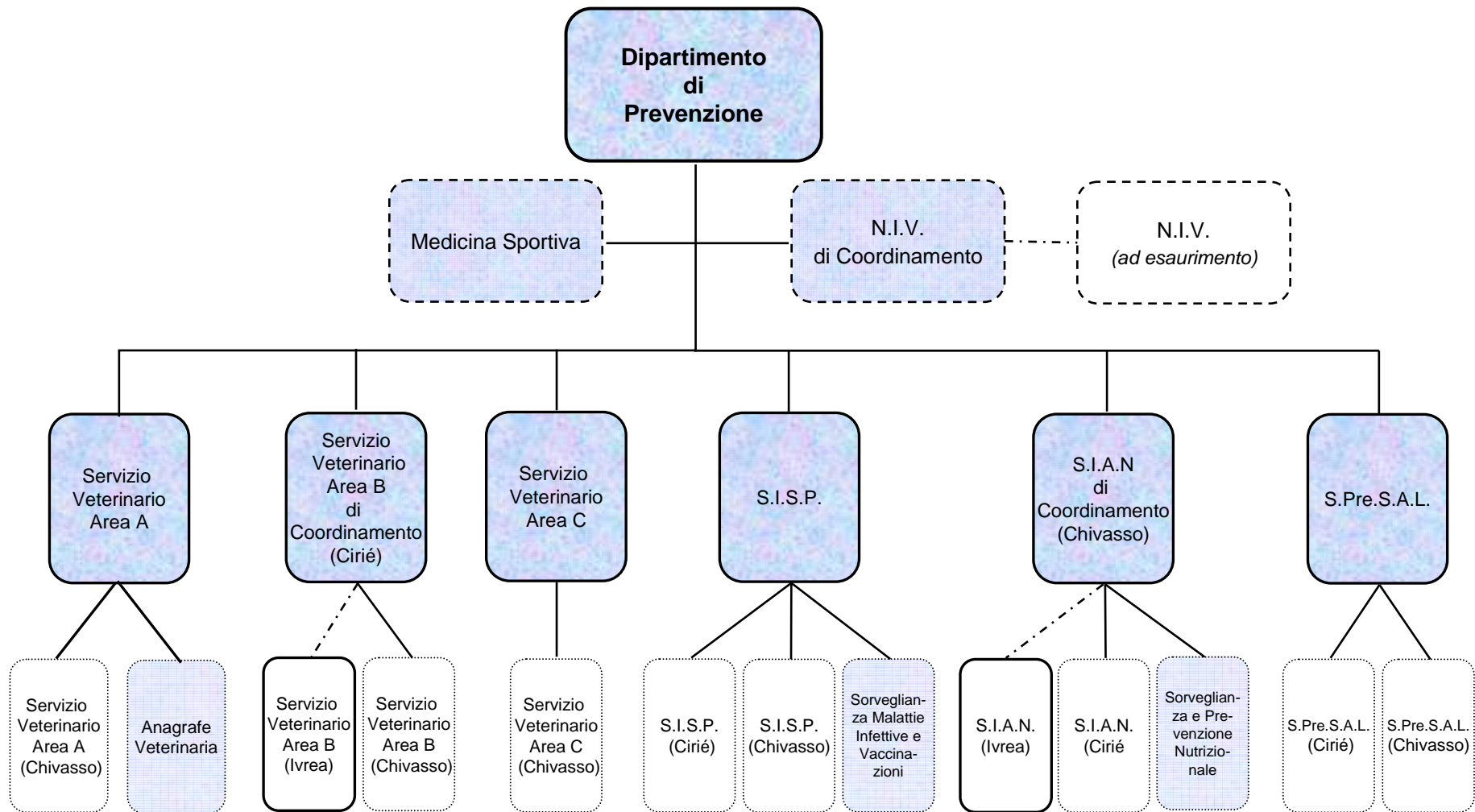








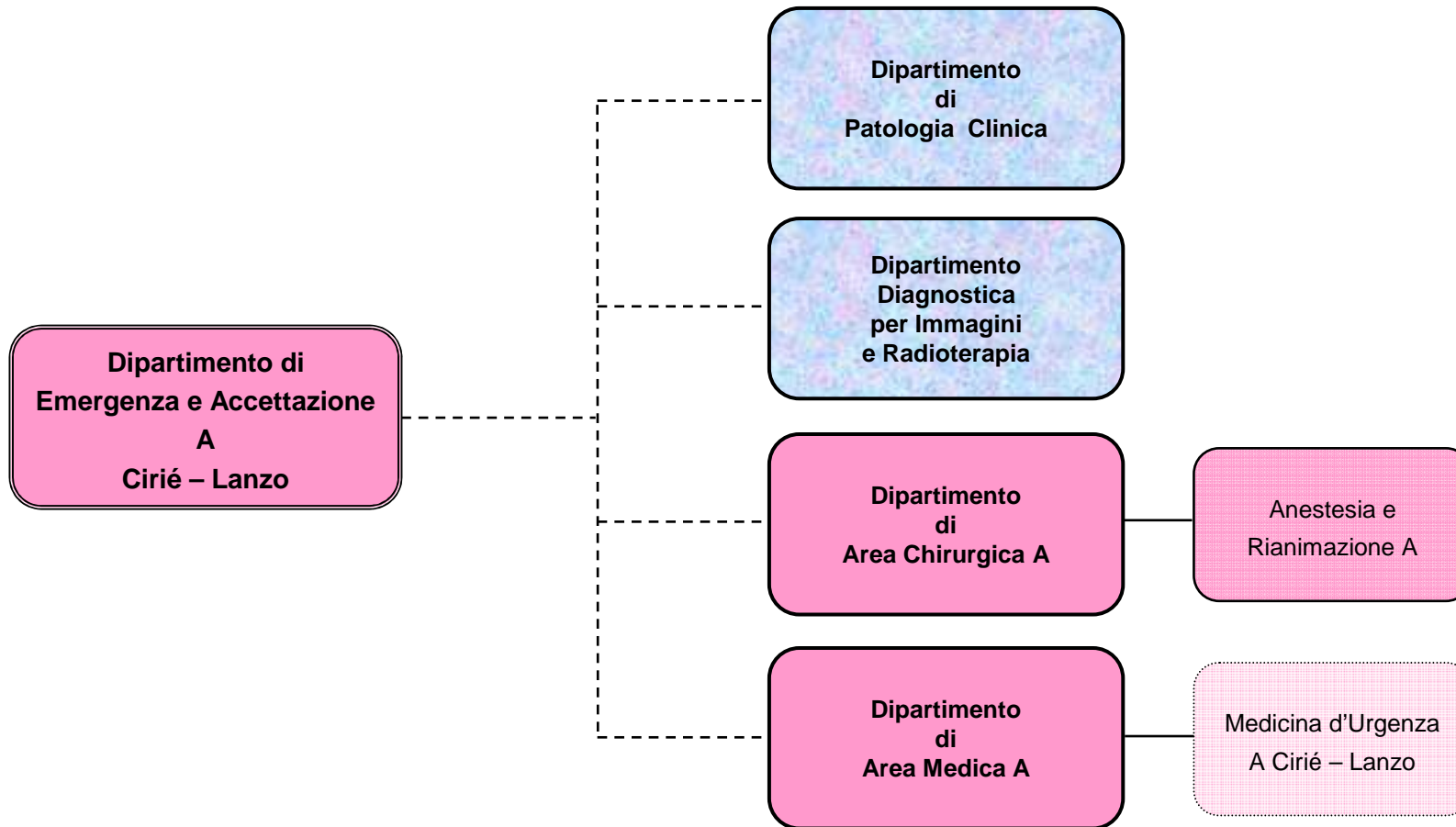
**LIVELLO
PREVENZIONE**

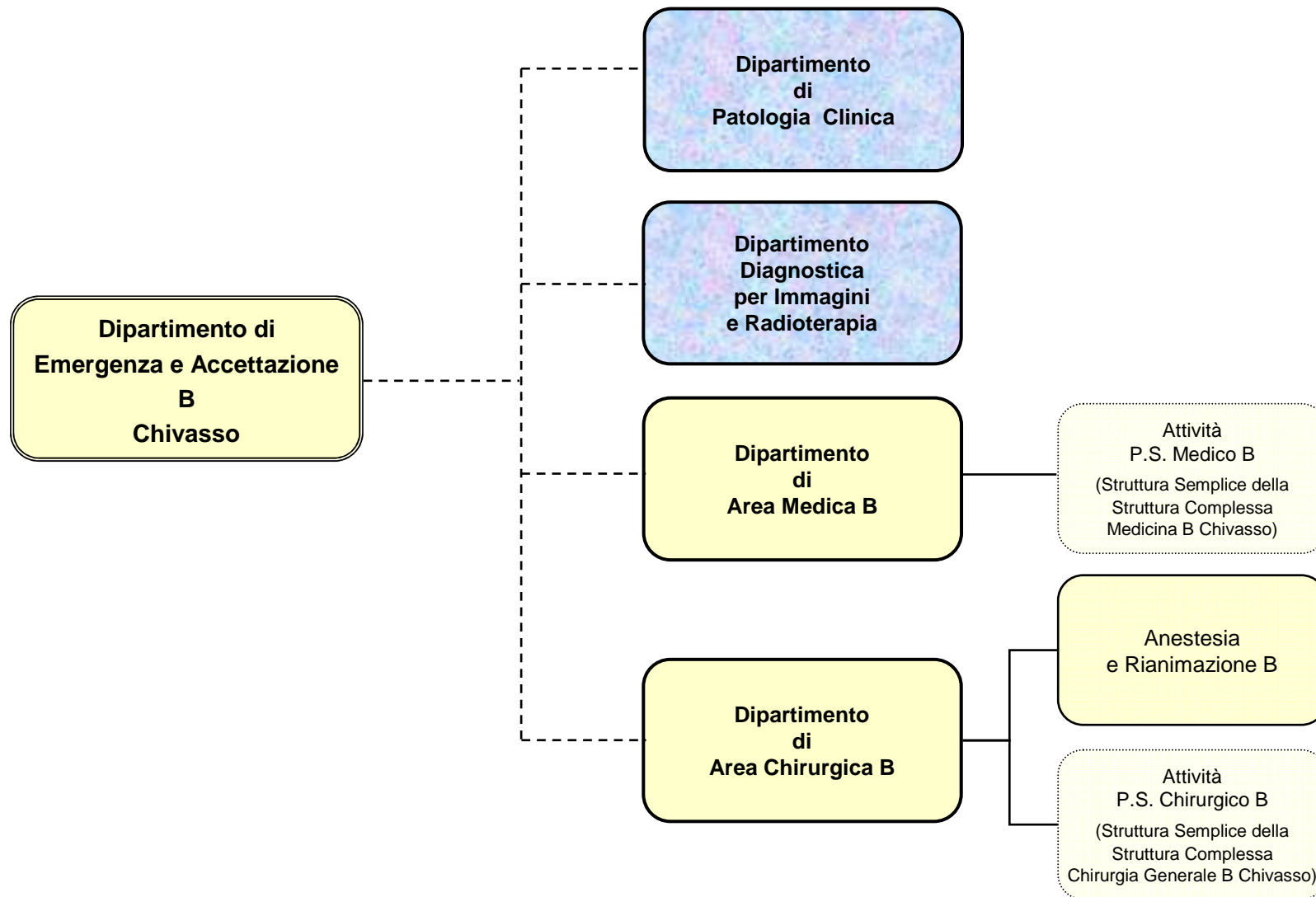


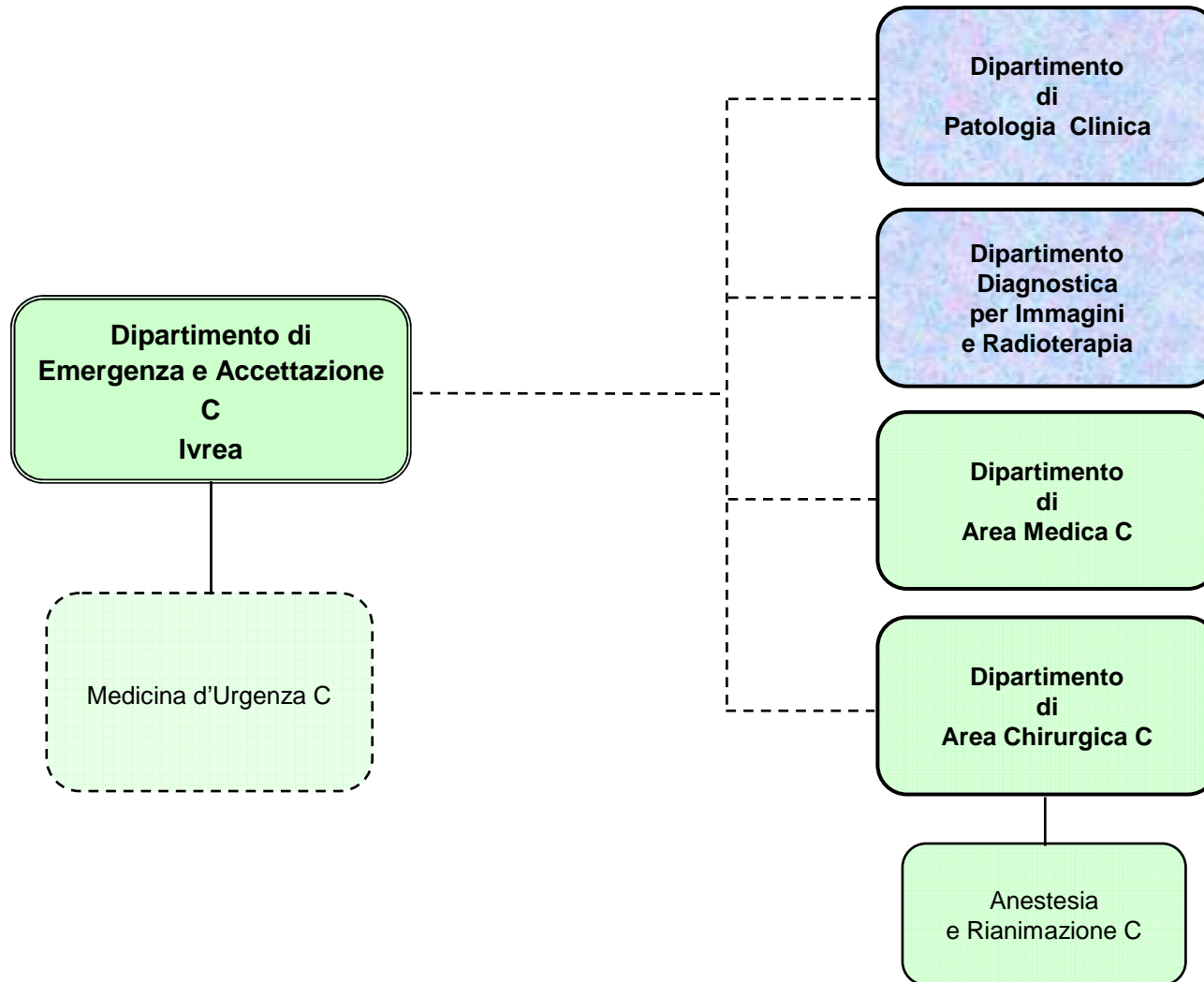
In dotazione organica è prevista l'unificazione delle 2 S.C. a seguito della copertura della Direzione Integrata della Prevenzione.

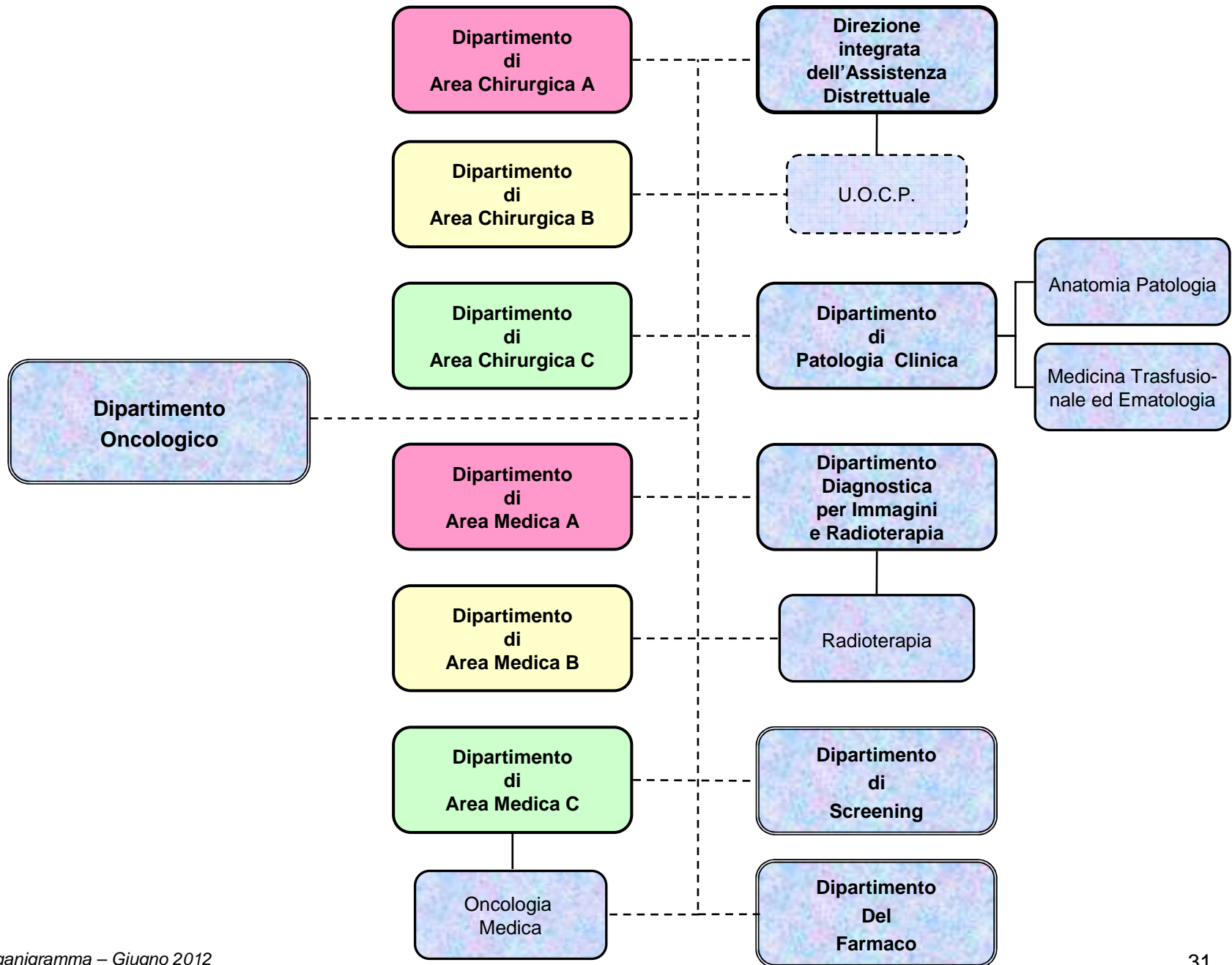


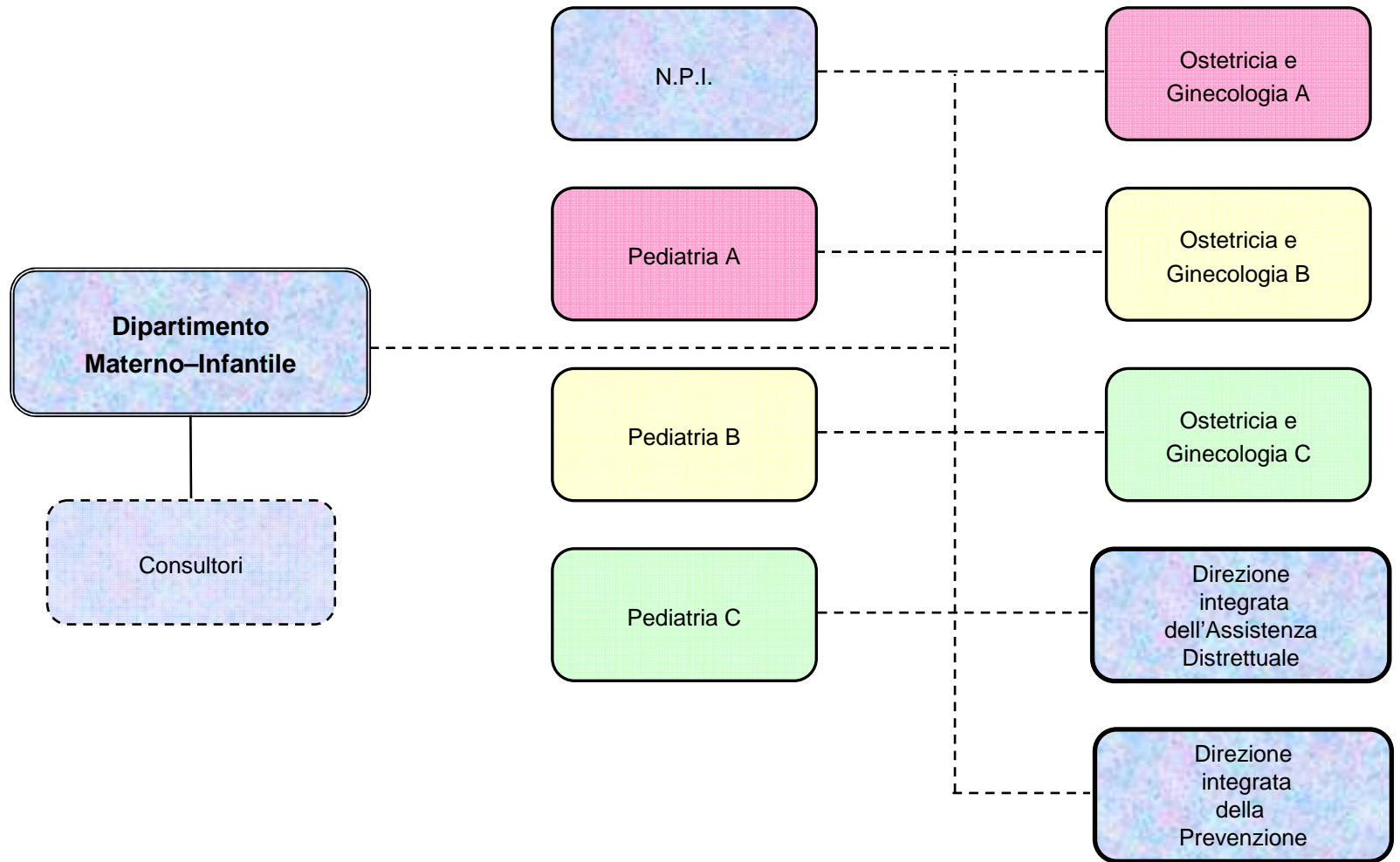
DIPARTIMENTI FUNZIONALI

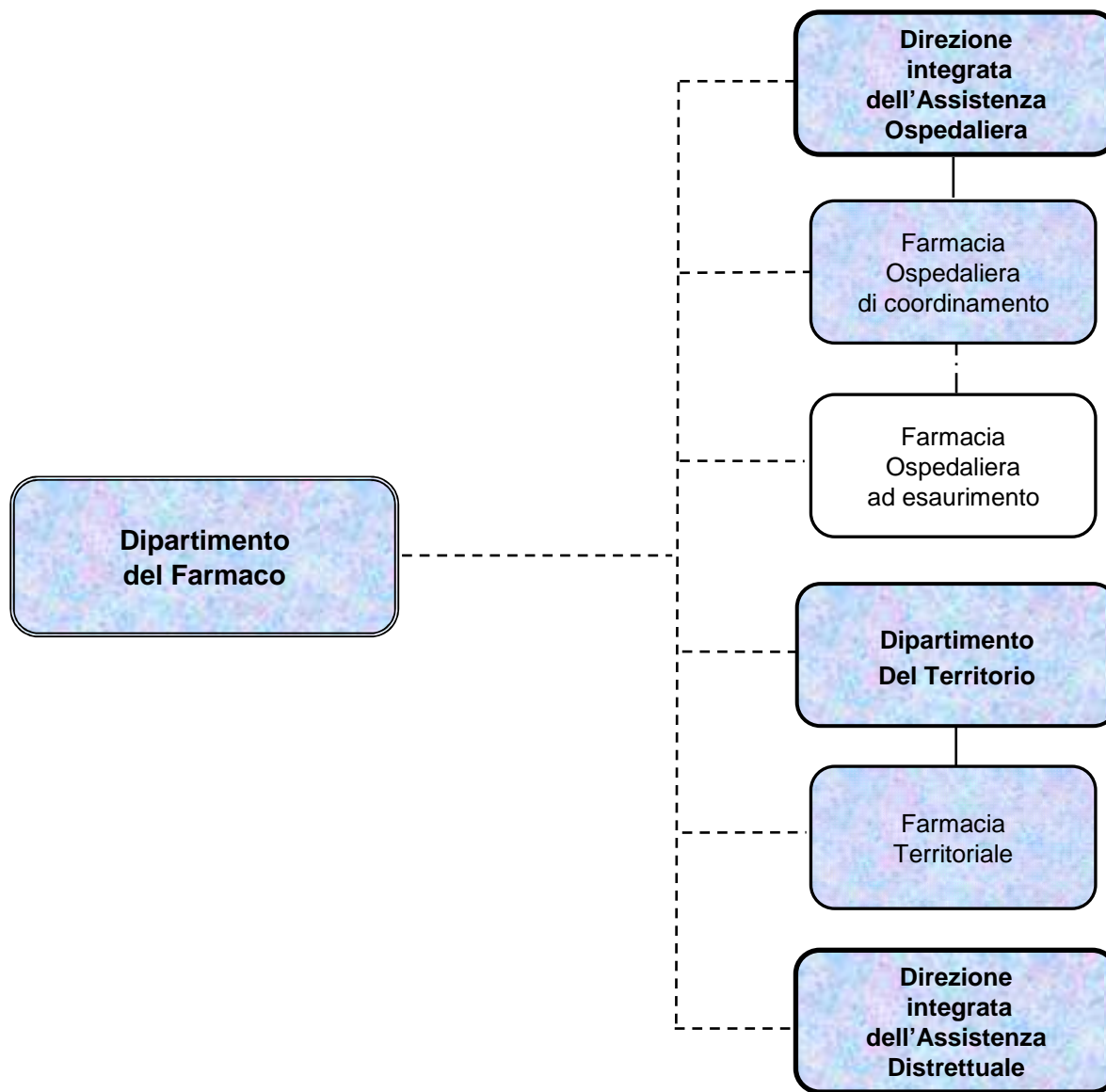


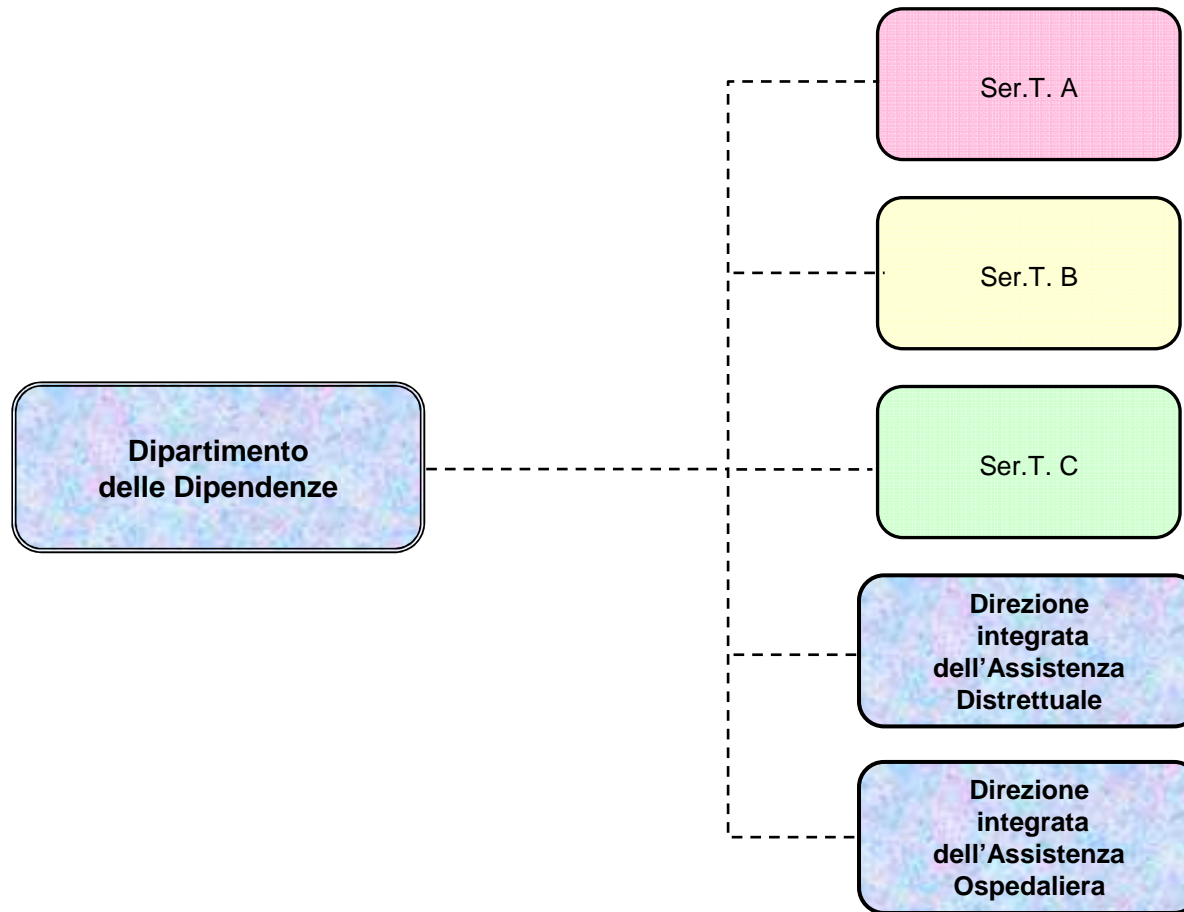


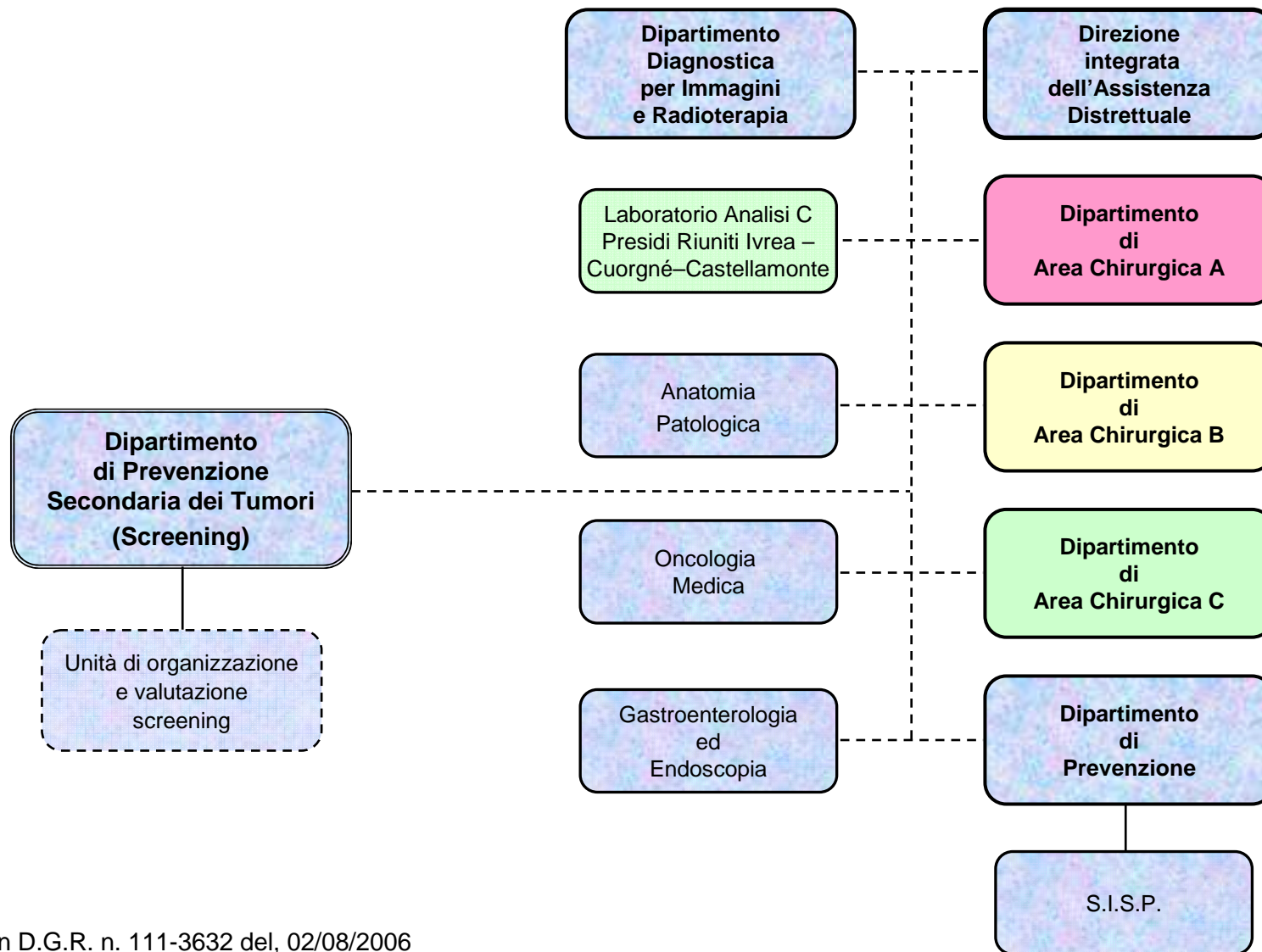












Istituito con D.G.R. n. 111-3632 del, 02/08/2006