



A.S.L. TO4

*Azienda Sanitaria Locale
di Ciriè, Chivasso e Ivrea*

Allegato alla Deliberazione n. 902 del 19 ottobre 2015

A.S.L. TO4
Atto Aziendale
Piano di Organizzazione 2015

Organigramma



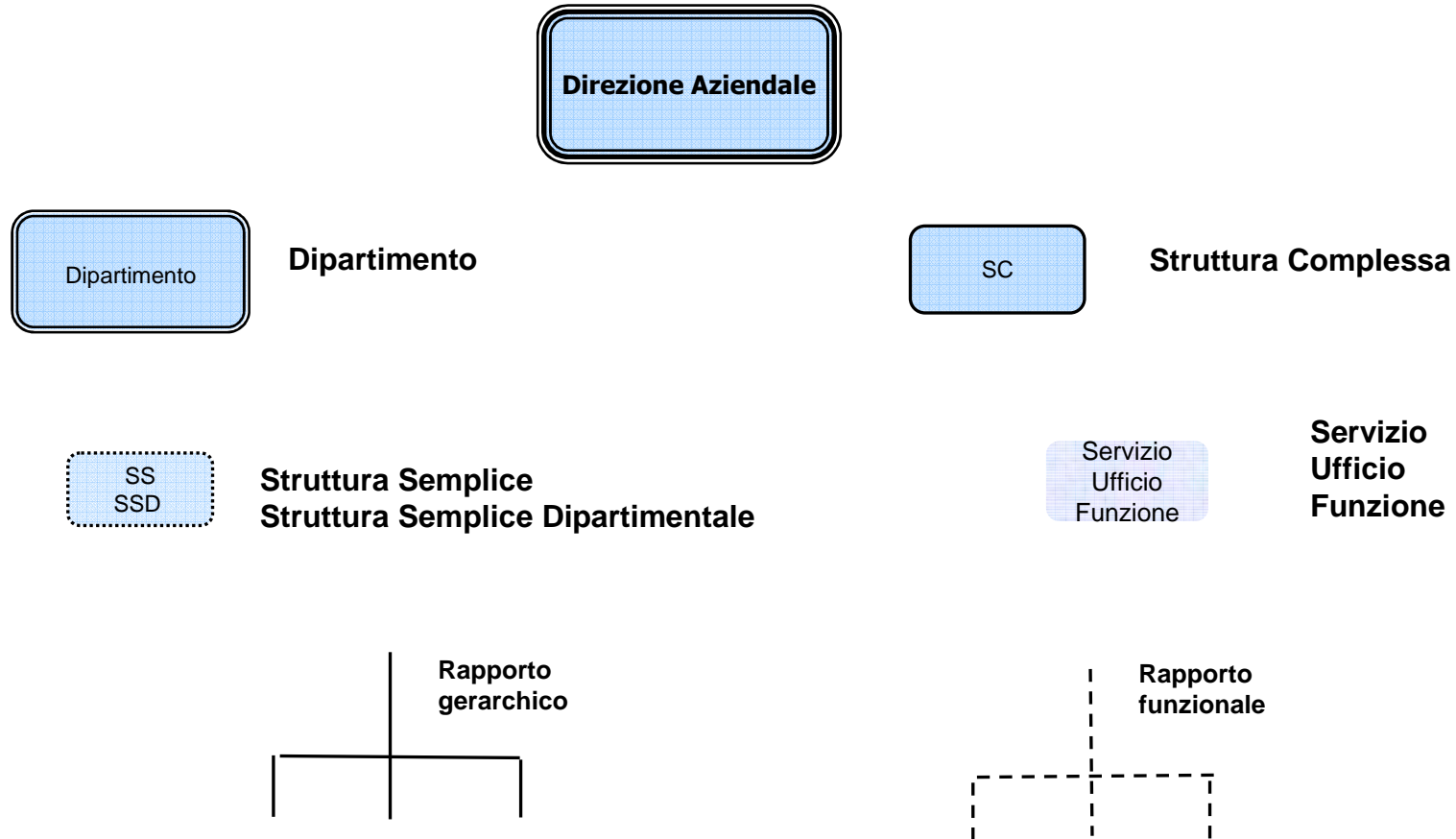
A.S.L. TO4

*Azienda Sanitaria Locale
di Ciriè, Chivasso e Ivrea*



Organigramma aziendale

Rappresentazione organigramma e legenda



Aree



A.S.L. TO4

*Azienda Sanitaria Locale
di Ciriè, Chivasso e Ivrea*

- Articolazione generale
- Area Staff
- Area Amministrativa
- Area Ospedaliera e Dipartimenti
- Area Territoriale e Dipartimenti

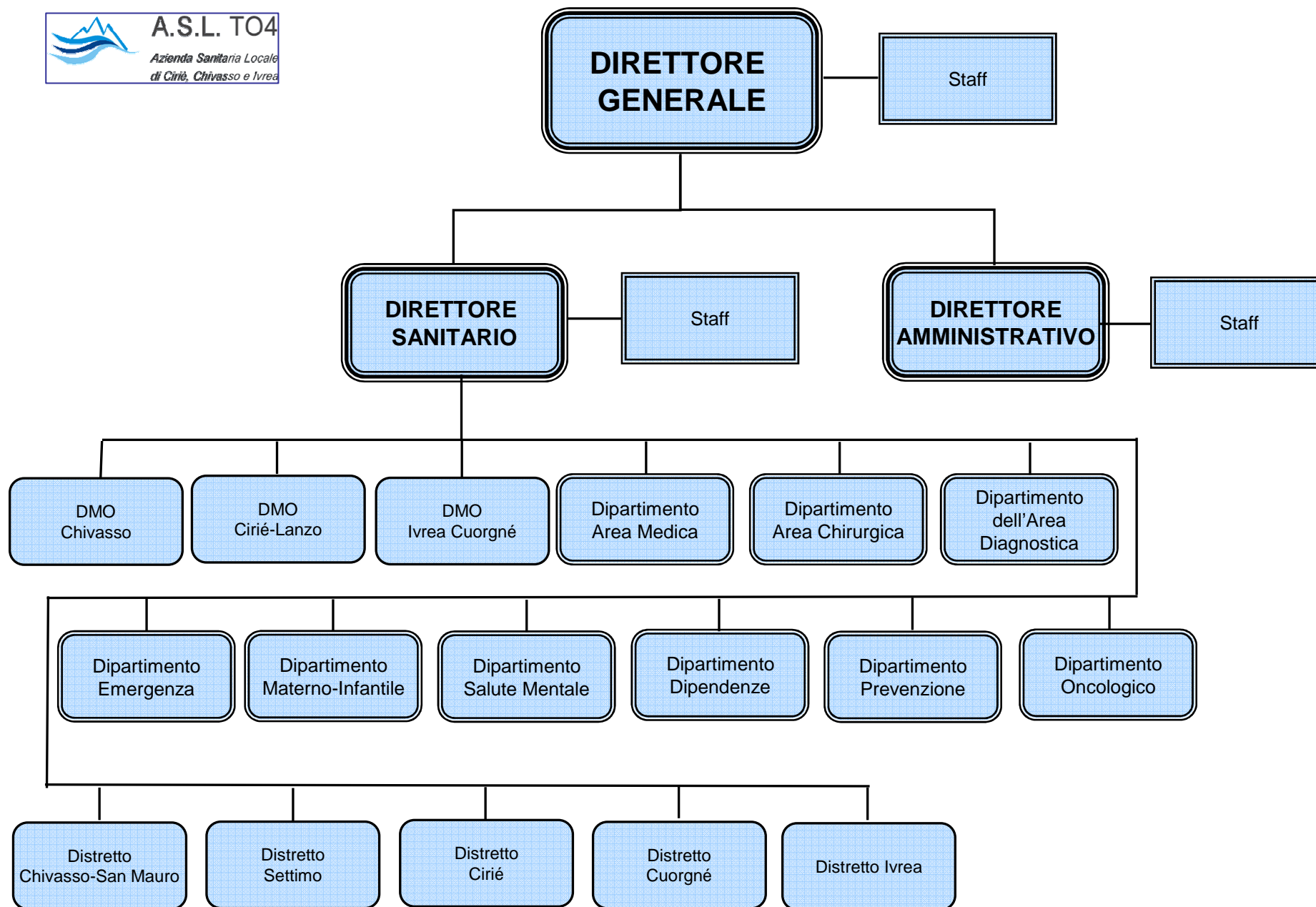


A.S.L. TO4

*Azienda Sanitaria Locale
di Ciriè, Chivasso e Ivrea*



Articolazione generale





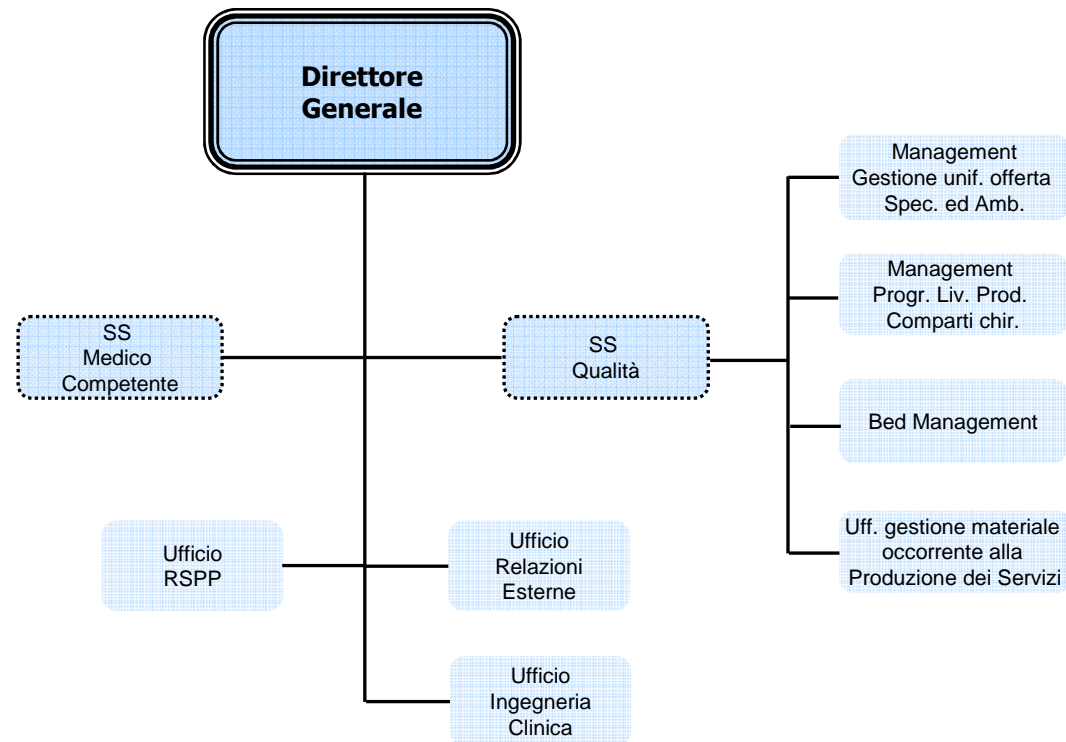
A.S.L. TO4

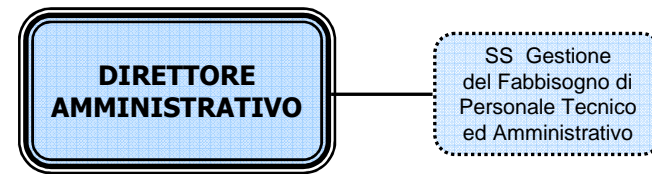
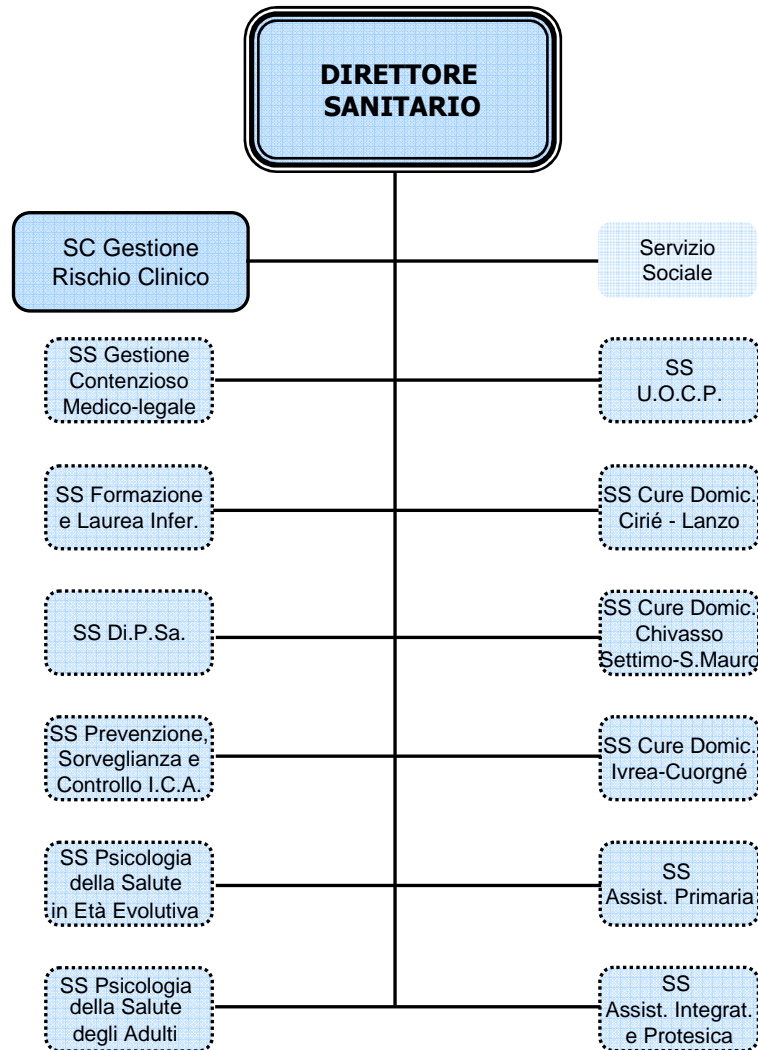
*Azienda Sanitaria Locale
di Ciriè, Chivasso e Ivrea*



Area Staff

- **Staff Direttore Generale**
- **Staff Direttore Sanitario**
- **Staff Direttore Amministrativo**





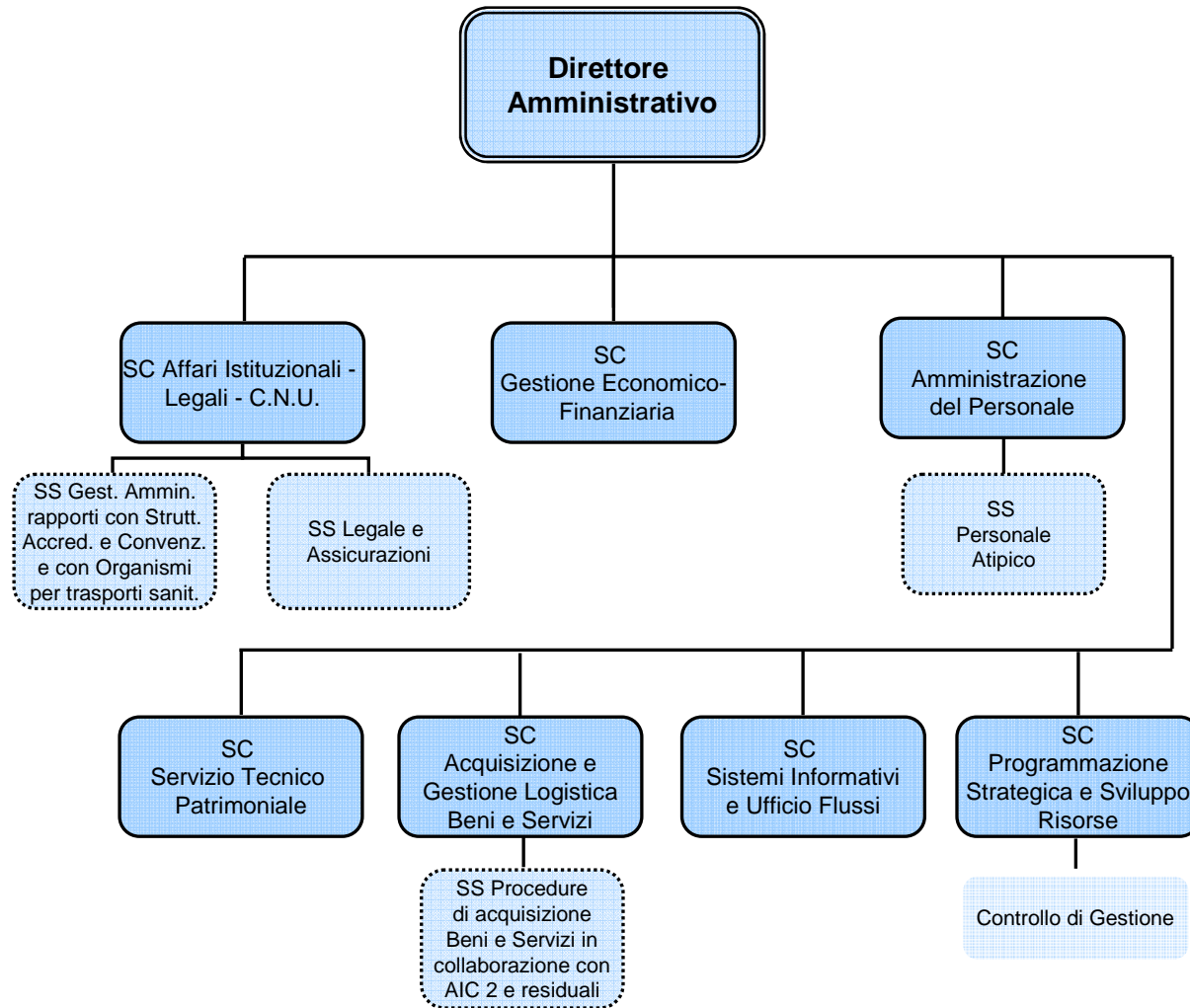


A.S.L. TO4

*Azienda Sanitaria Locale
di Ciriè, Chivasso e Ivrea*



Area Amministrativa





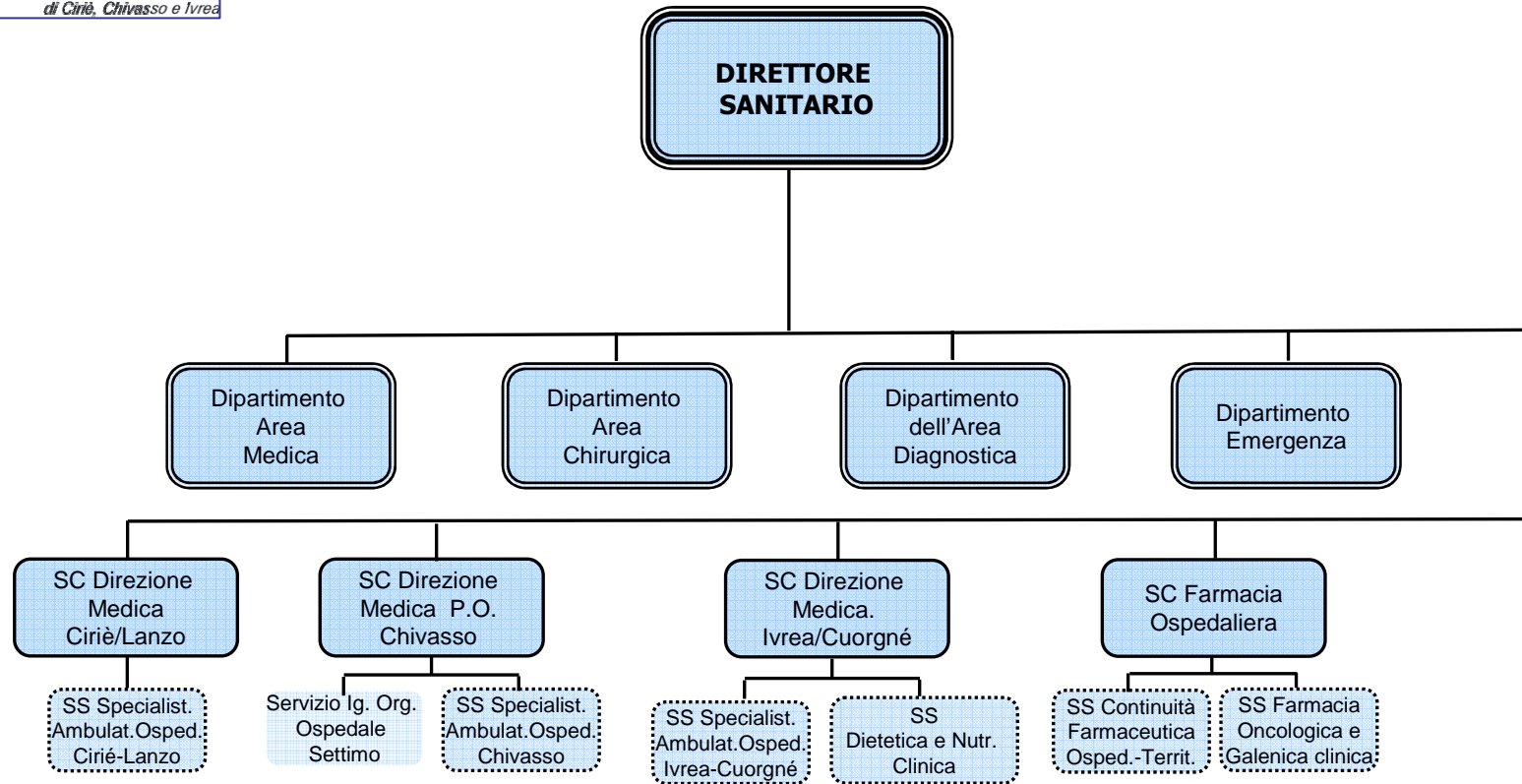
A.S.L. TO4

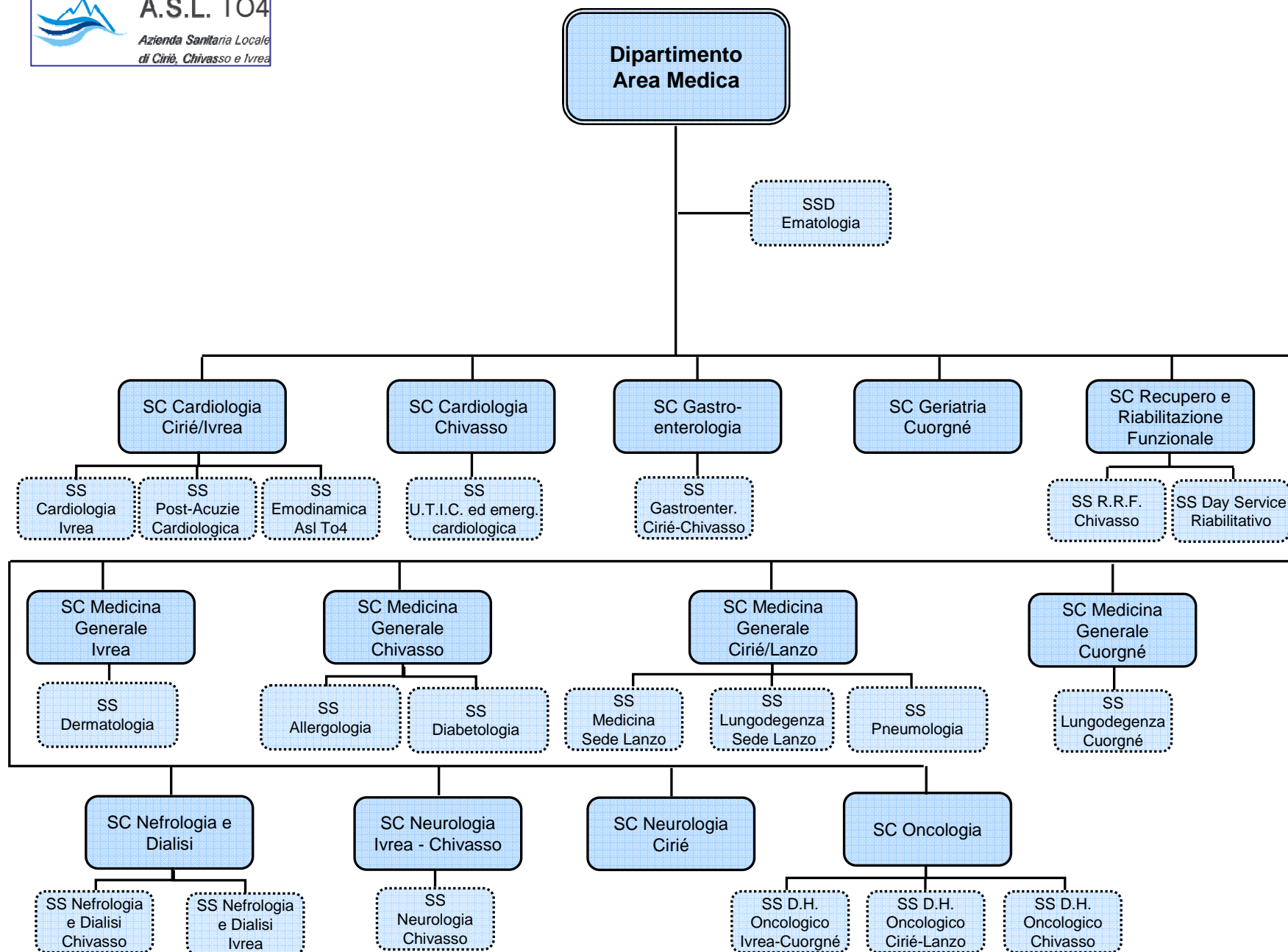
*Azienda Sanitaria Locale
di Ciriè, Chivasso e Ivrea*

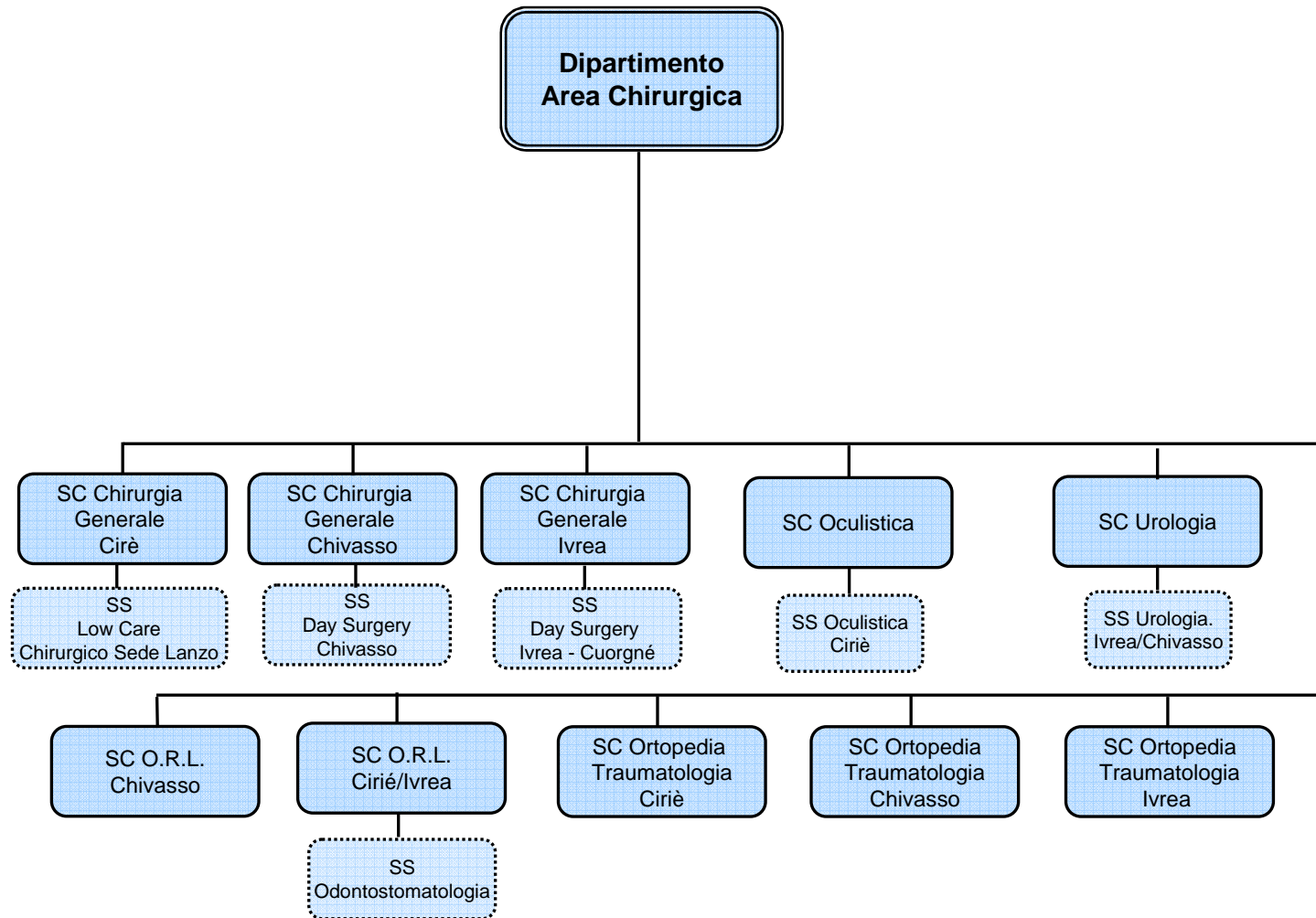


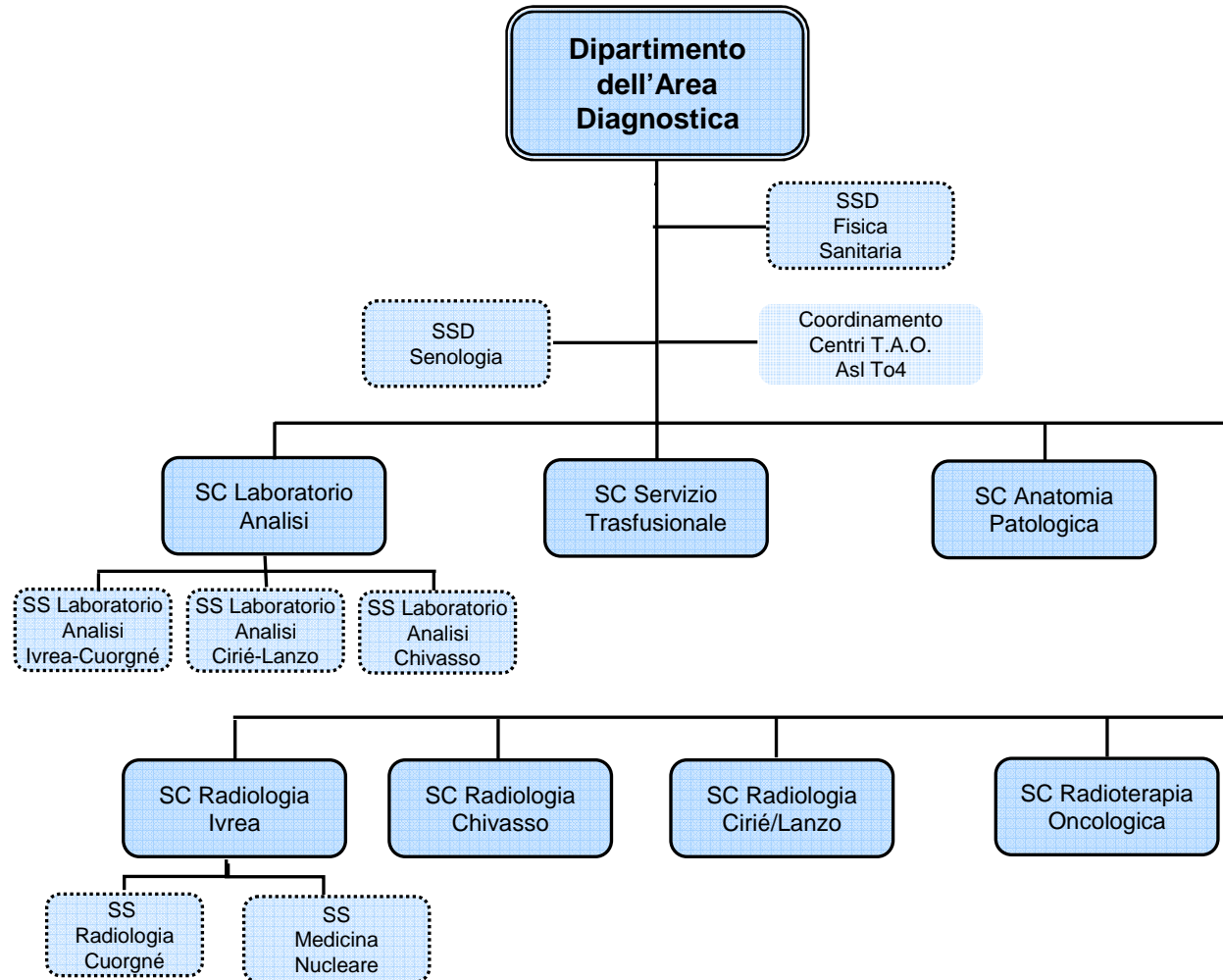
Area Ospedaliera e Dipartimenti

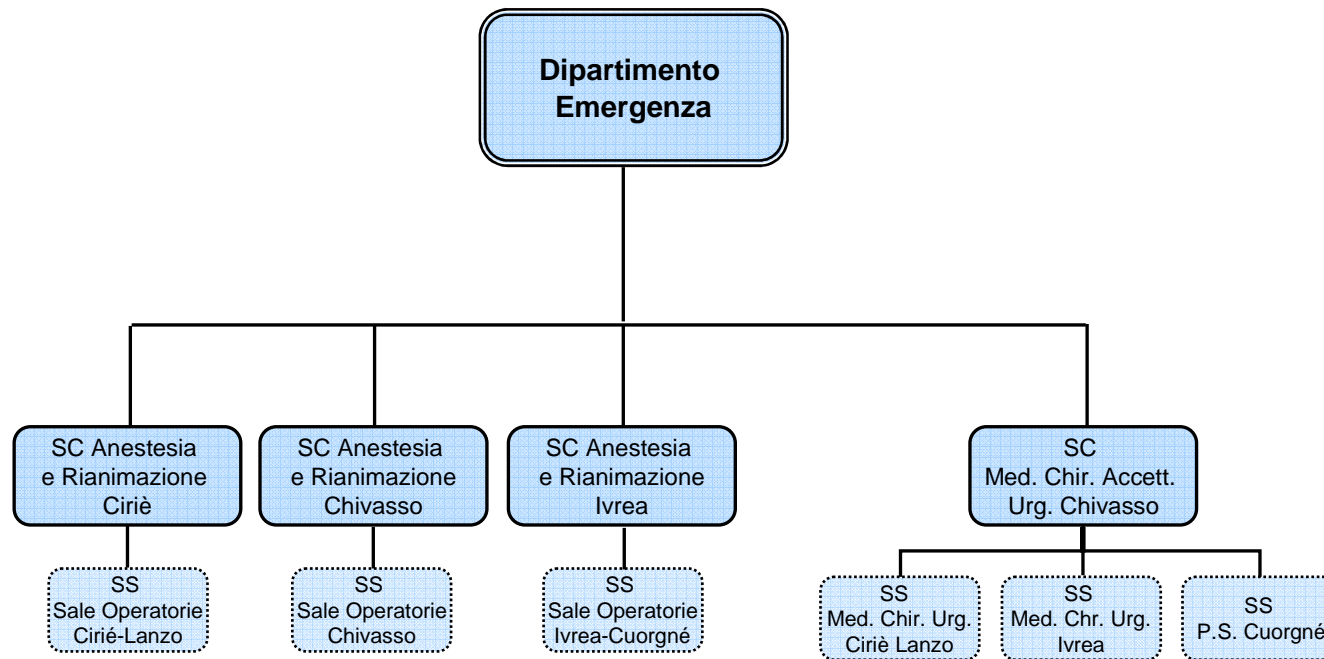
- **Dipartimento di Area Medica**
- **Dipartimento di Area Chirurgica**
- **Dipartimento di Area Diagnostica**
- **Dipartimento di Emergenza**













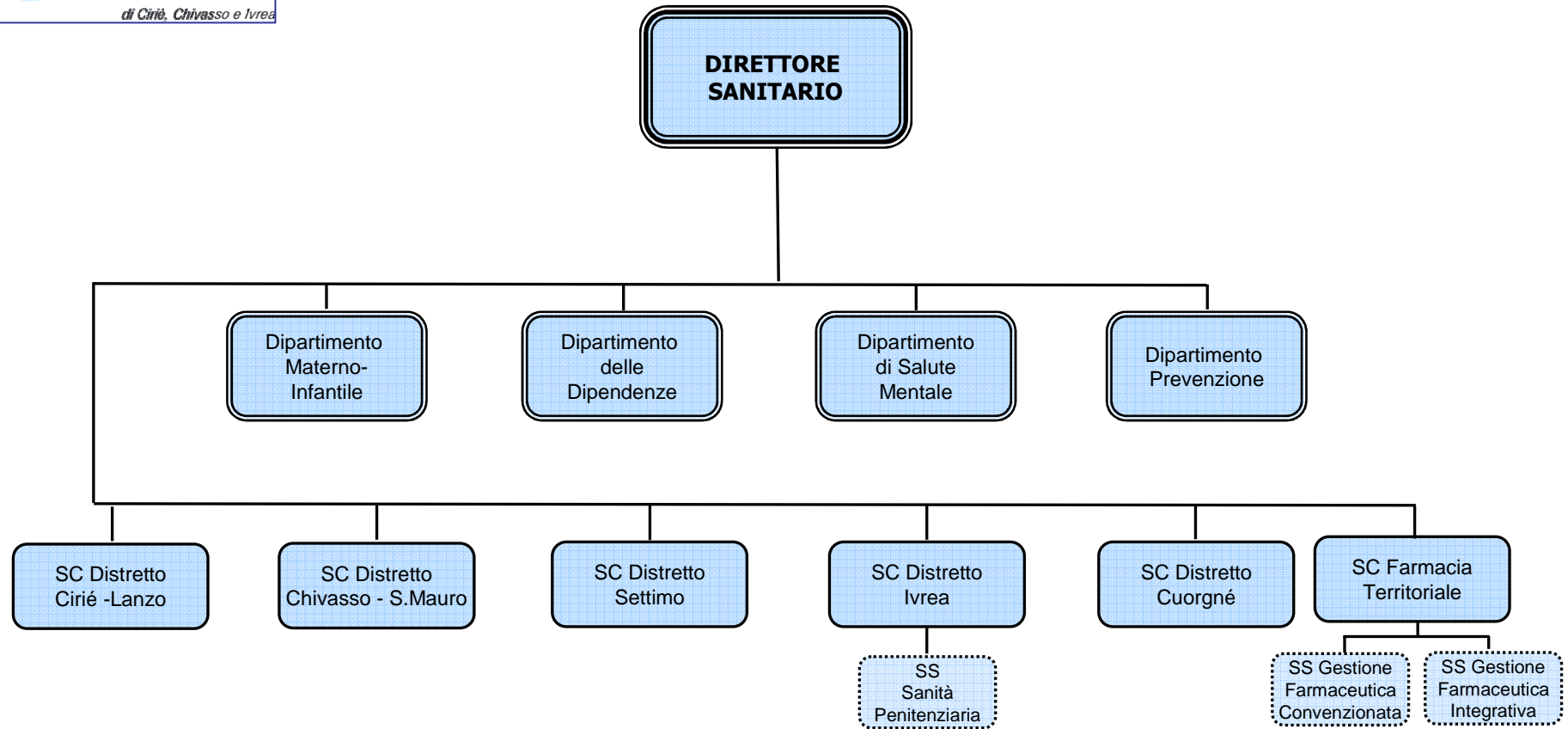
A.S.L. TO4

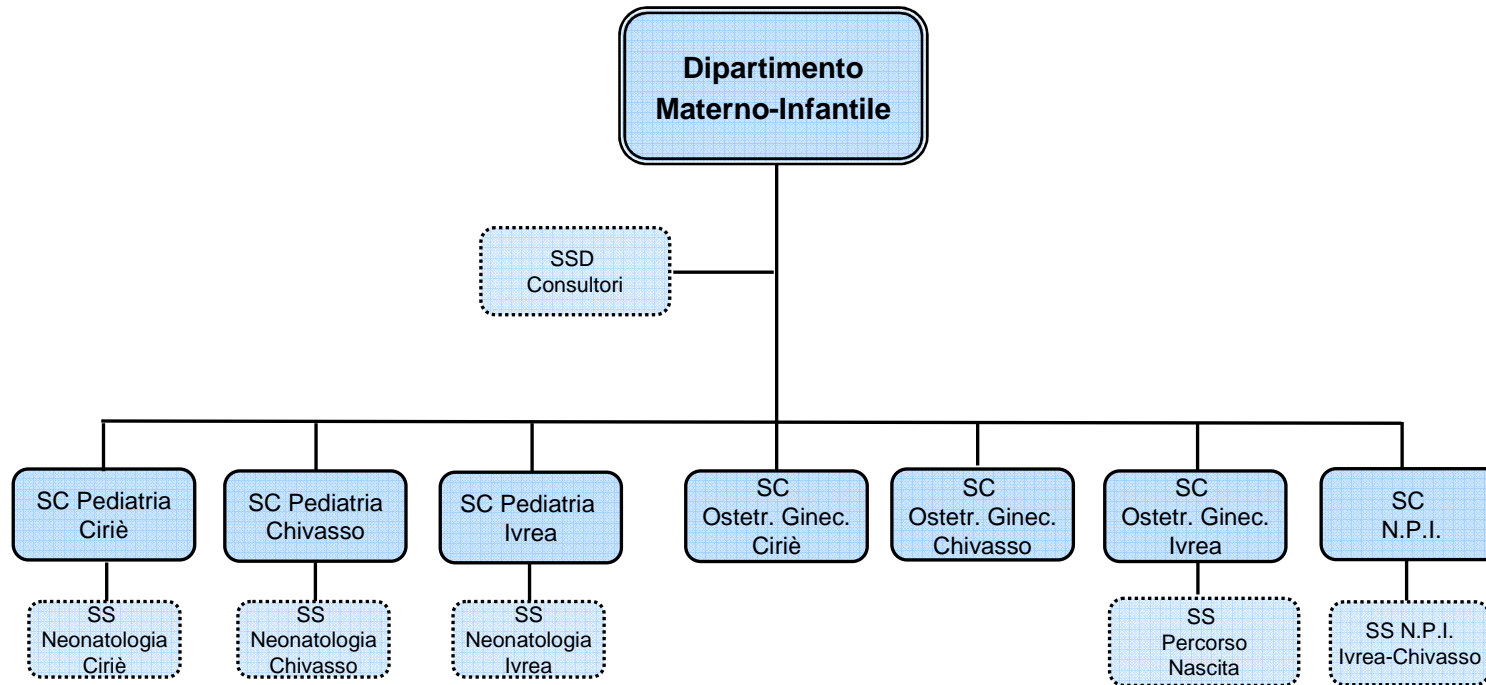
*Azienda Sanitaria Locale
di Ciriè, Chivasso e Ivrea*

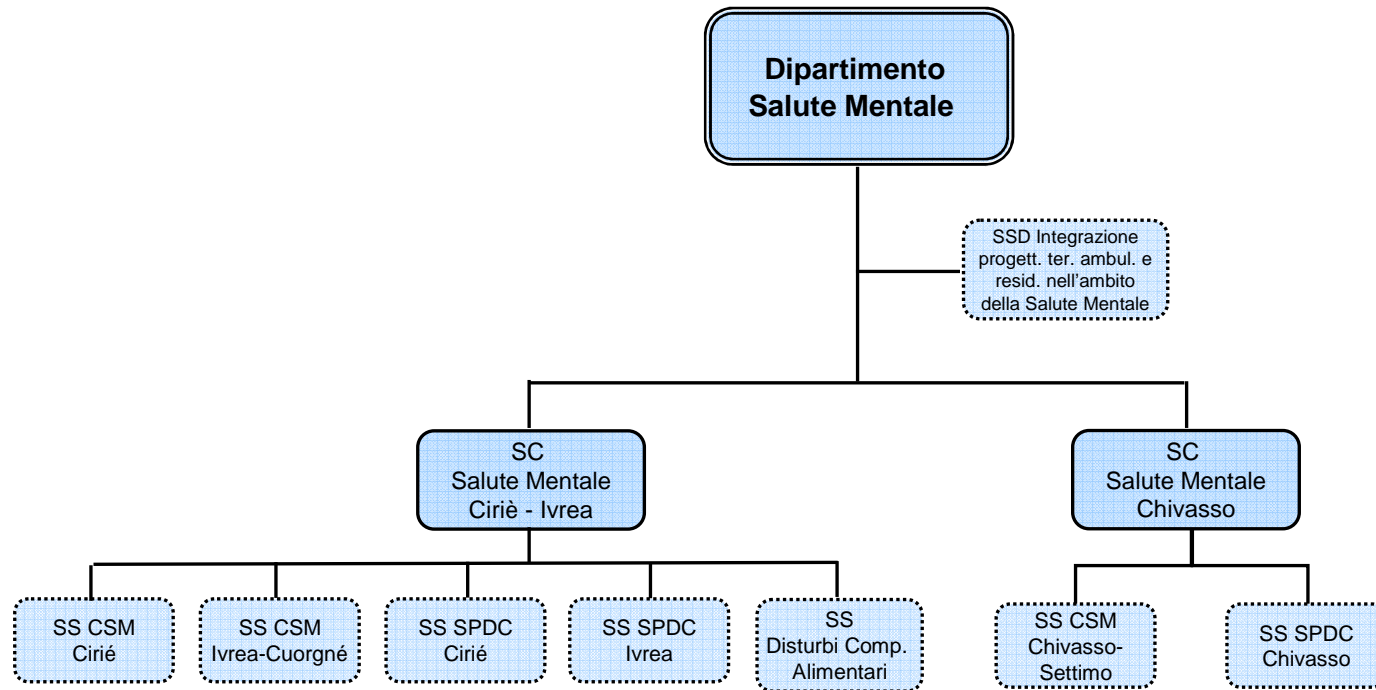


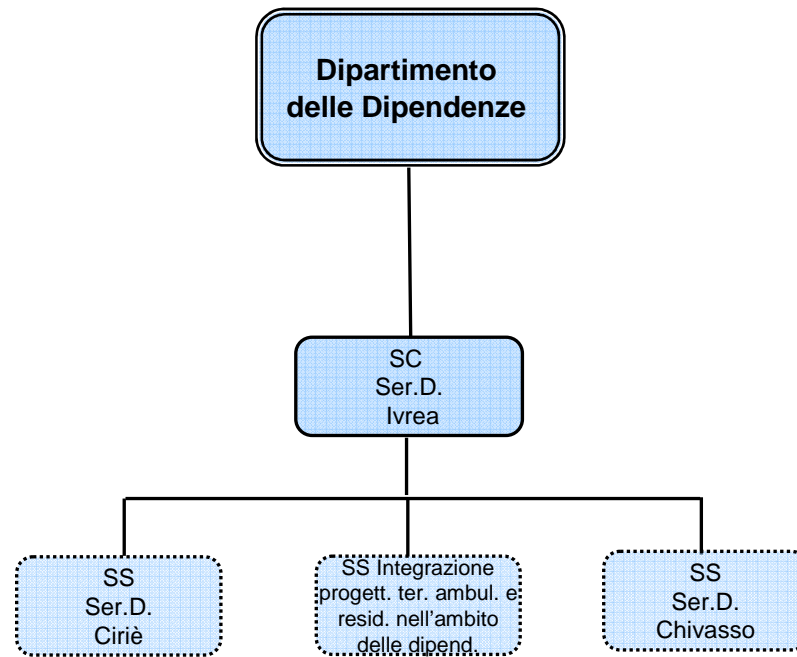
Area Territoriale e Dipartimenti

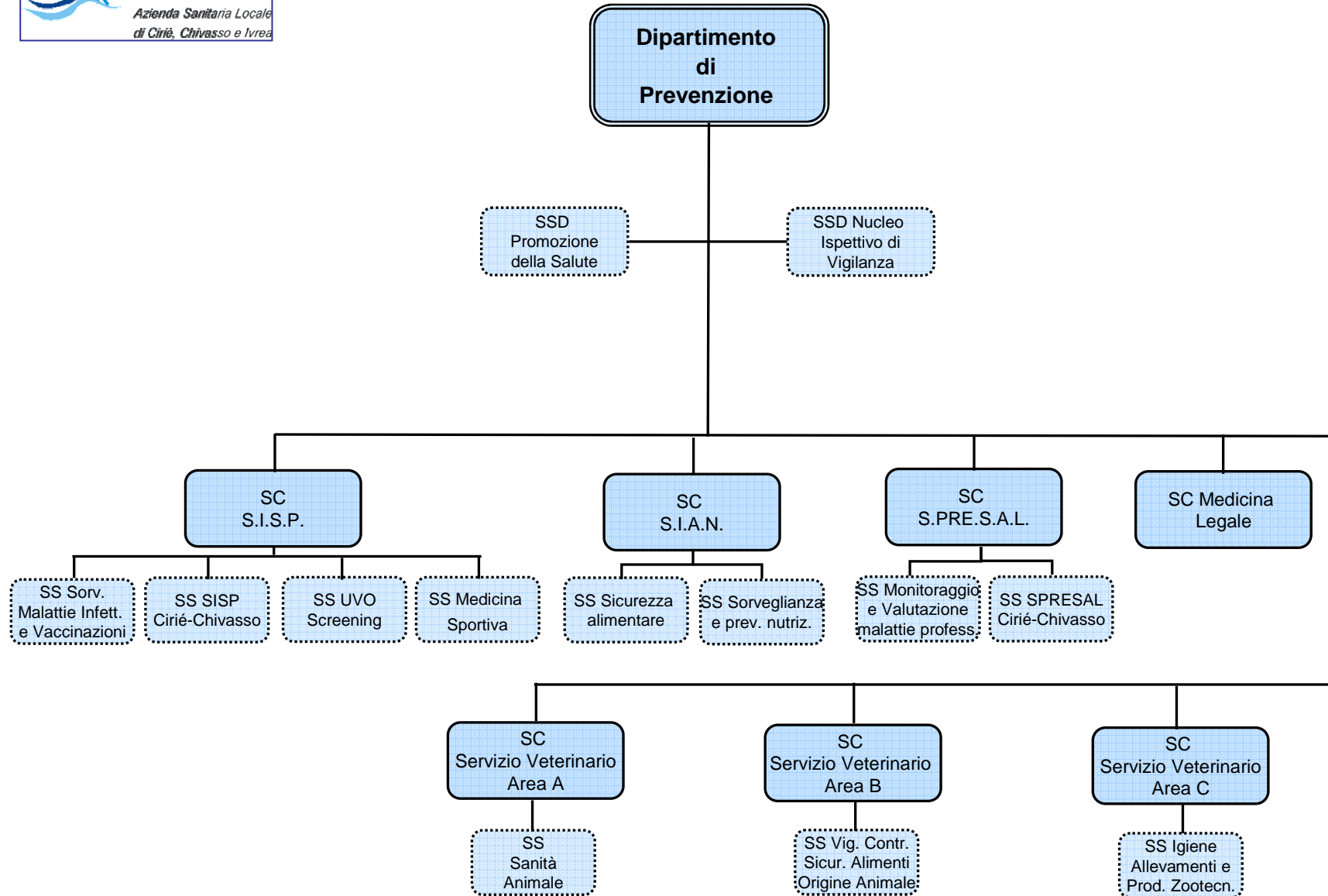
- **Dipartimento Materno Infantile (Trans-Murale)**
- **Dipartimento Salute Mentale (Trans-Murale)**
- **Dipartimento delle Dipendenze**
- **Dipartimento di Prevenzione**













A.S.L. TO4

*Azienda Sanitaria Locale
di Ciriè, Chivasso e Ivrea*



Dipartimento Funzionale

- Dipartimento Oncologico

