



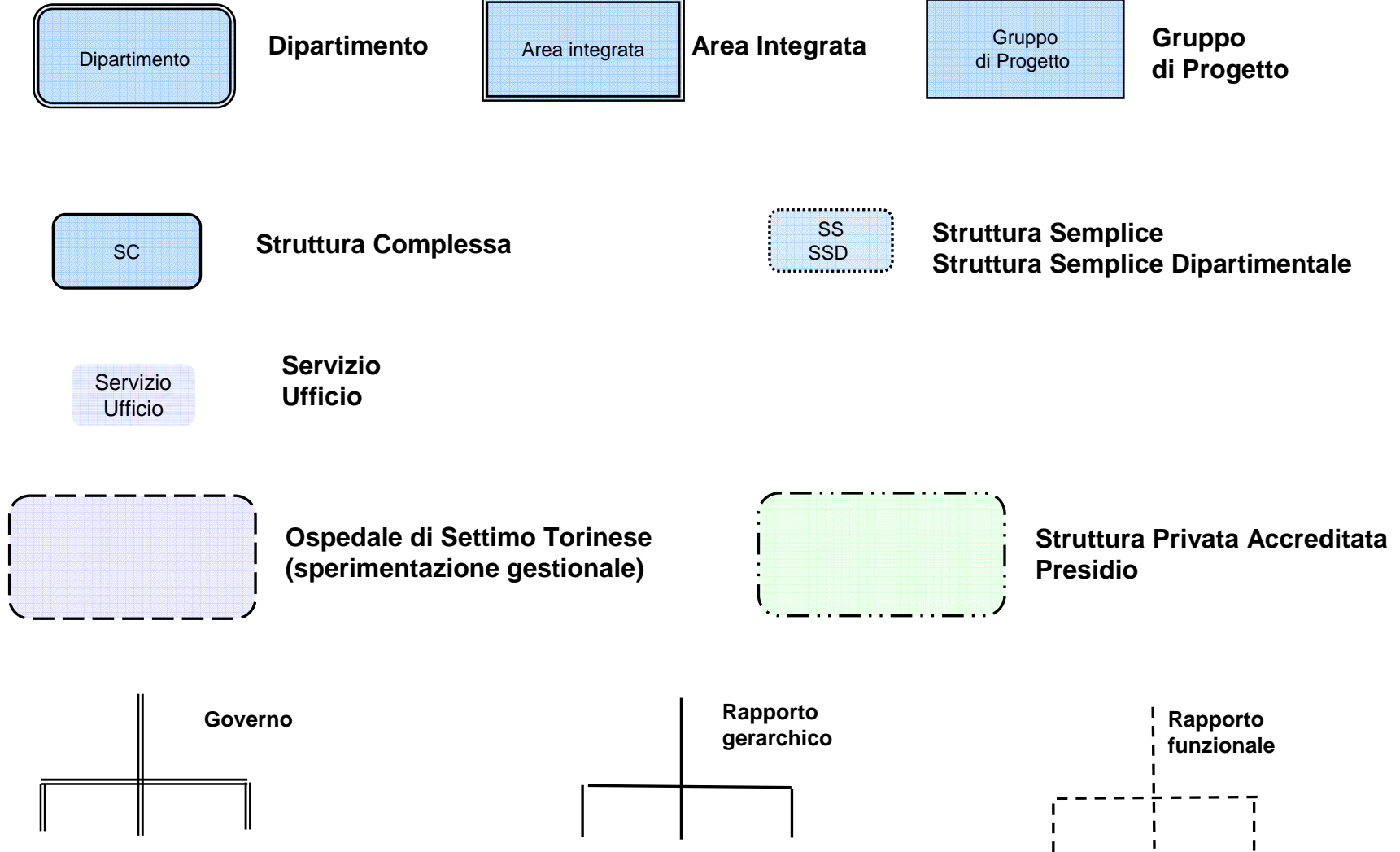
**A.S.L. TO4**

*Azienda Sanitaria Locale  
di Ciriè, Chivasso e Ivrea*



# Organigramma aziendale

## Rappresentazione organigramma e legenda



# Are



A.S.L. TO4

*Azienda Sanitaria Locale  
di Ciriè, Chivasso e Ivrea*

- Articolazione generale
- Area Staff
- Area Amministrativa e Dipartimento
- Area Ospedaliera e Dipartimenti
- Area Territoriale e Dipartimenti
- Area Prevenzione e Dipartimento
- Dipartimenti Funzionali

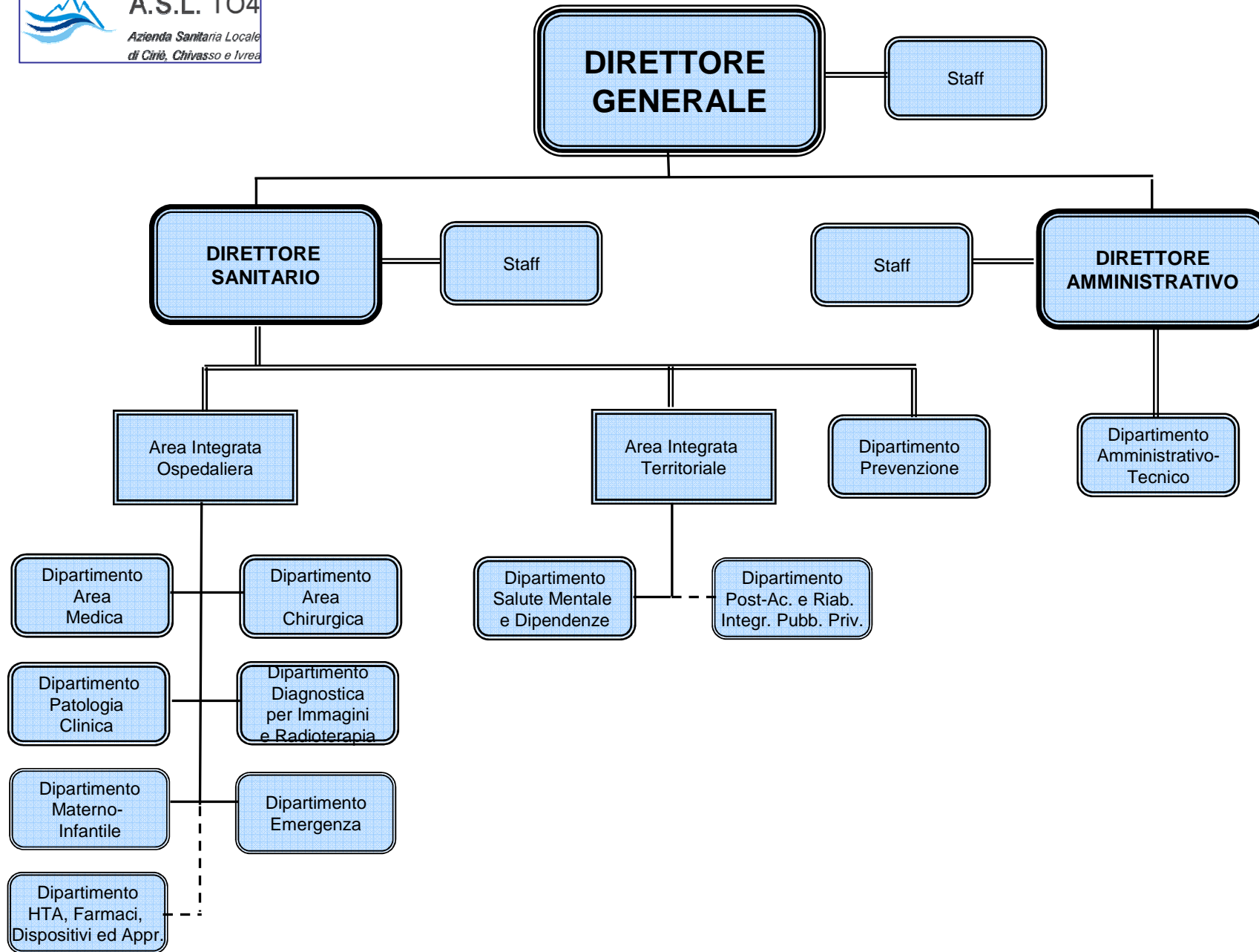


**A.S.L. TO4**

*Azienda Sanitaria Locale  
di Ciriè, Chivasso e Ivrea*



## **2.1. Articolazione generale**





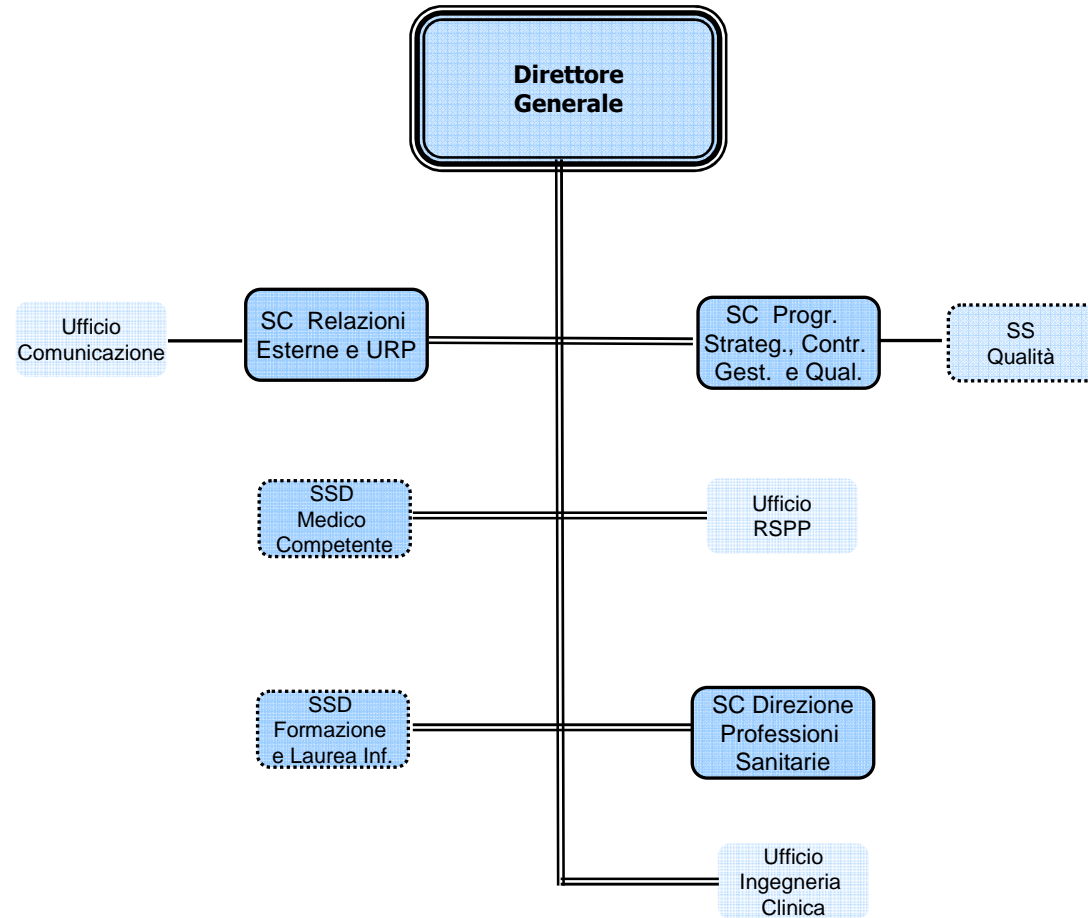
**A.S.L. TO4**

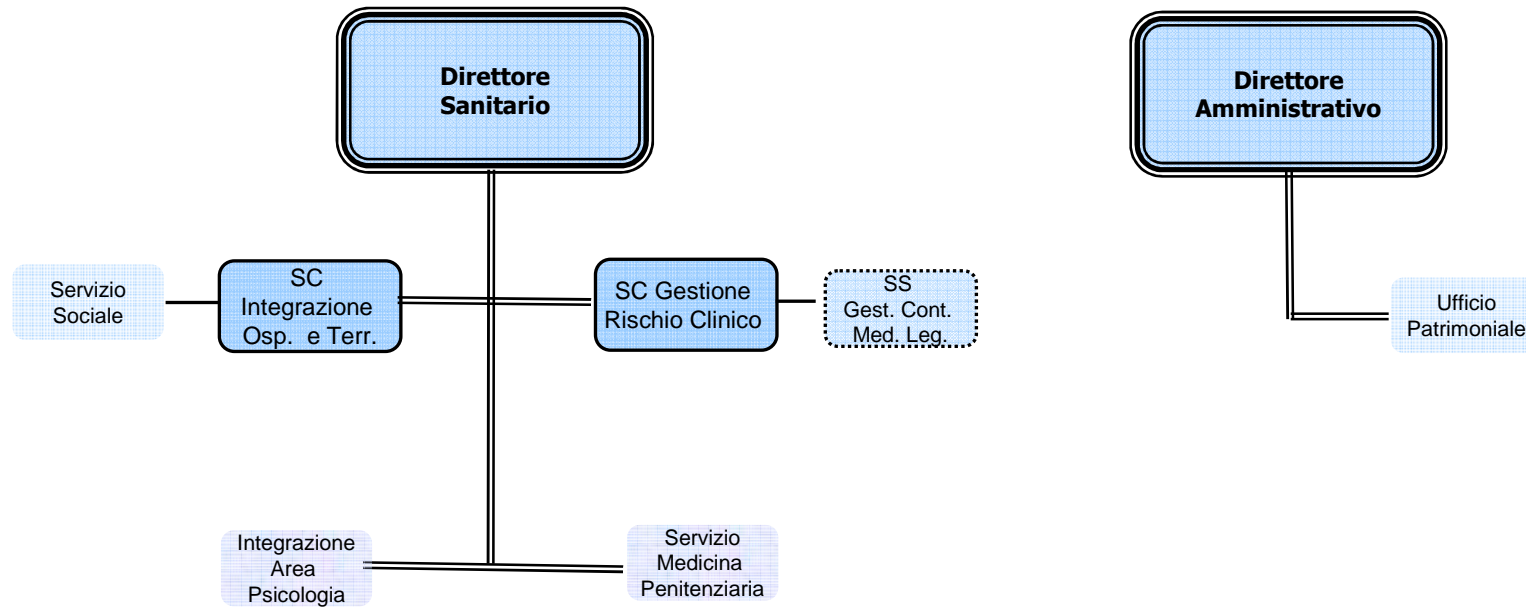
*Azienda Sanitaria Locale  
di Ciriè, Chivasso e Ivrea*



## **2.2 Area Staff**

- Staff Direttore Generale**
- Staff Direttore Sanitario**









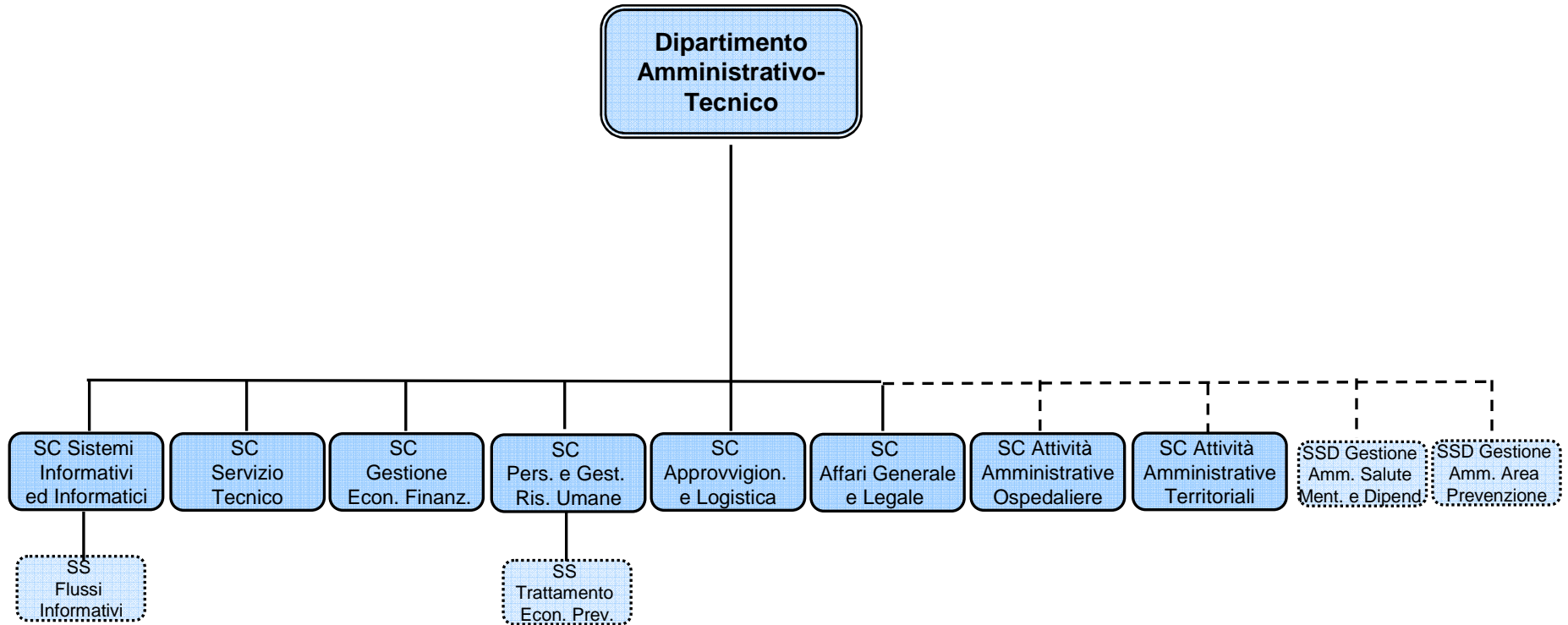
**A.S.L. TO4**

*Azienda Sanitaria Locale  
di Ciriè, Chivasso e Ivrea*



## **2.3. Area Amministrativa e Dipartimento**

**Dipartimento Amministrativo**





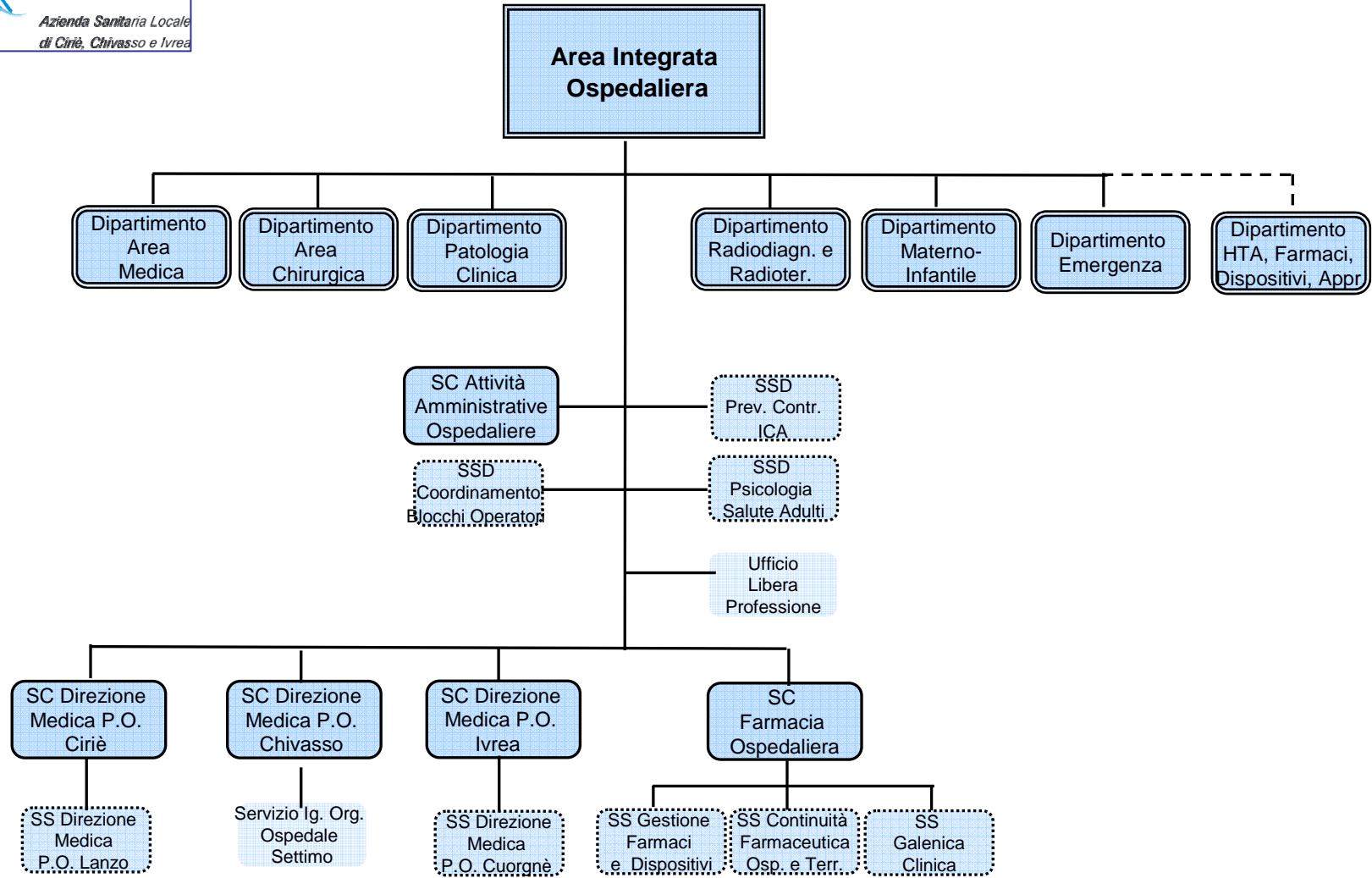
**A.S.L. TO4**

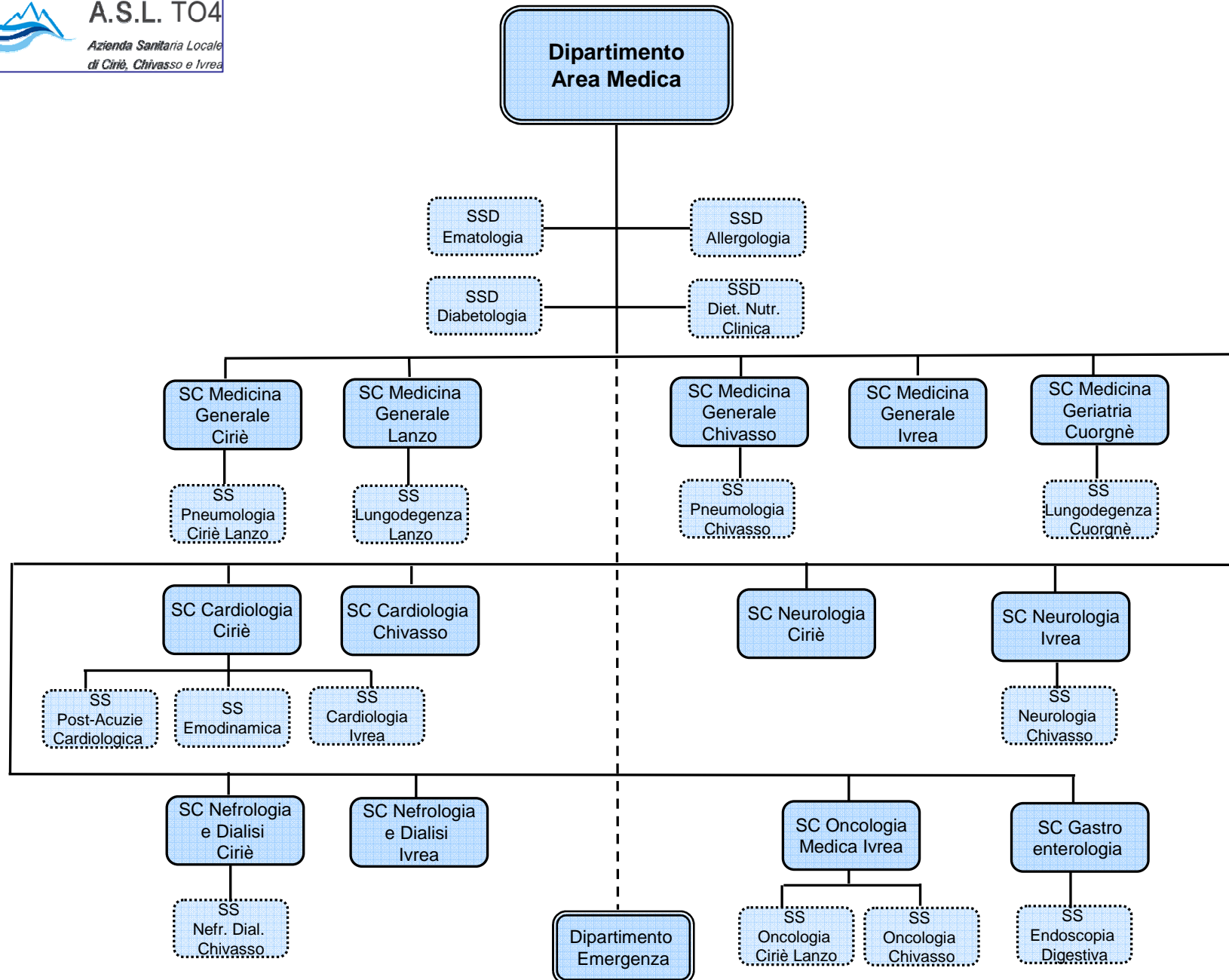
*Azienda Sanitaria Locale  
di Ciriè, Chivasso e Ivrea*

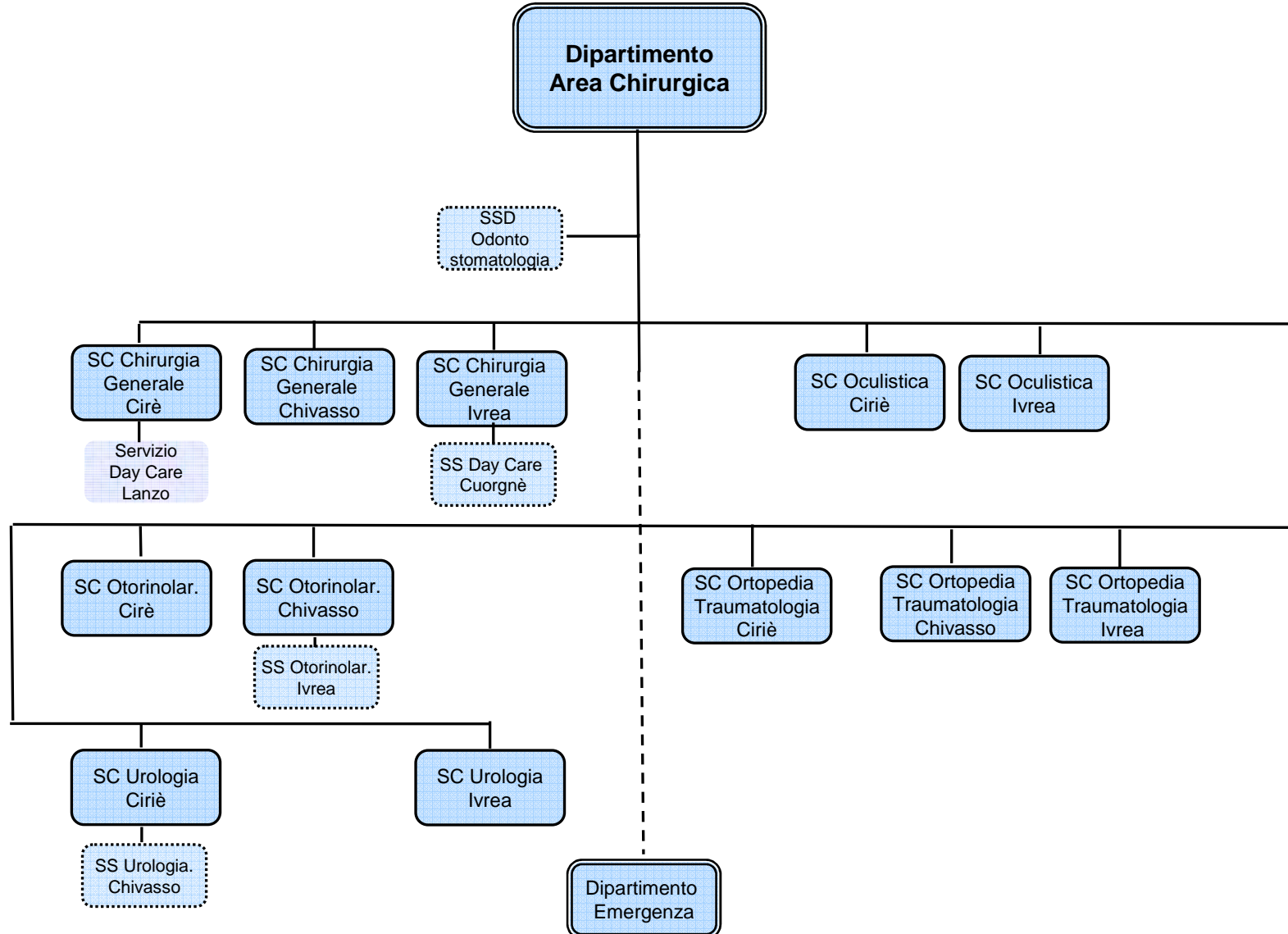


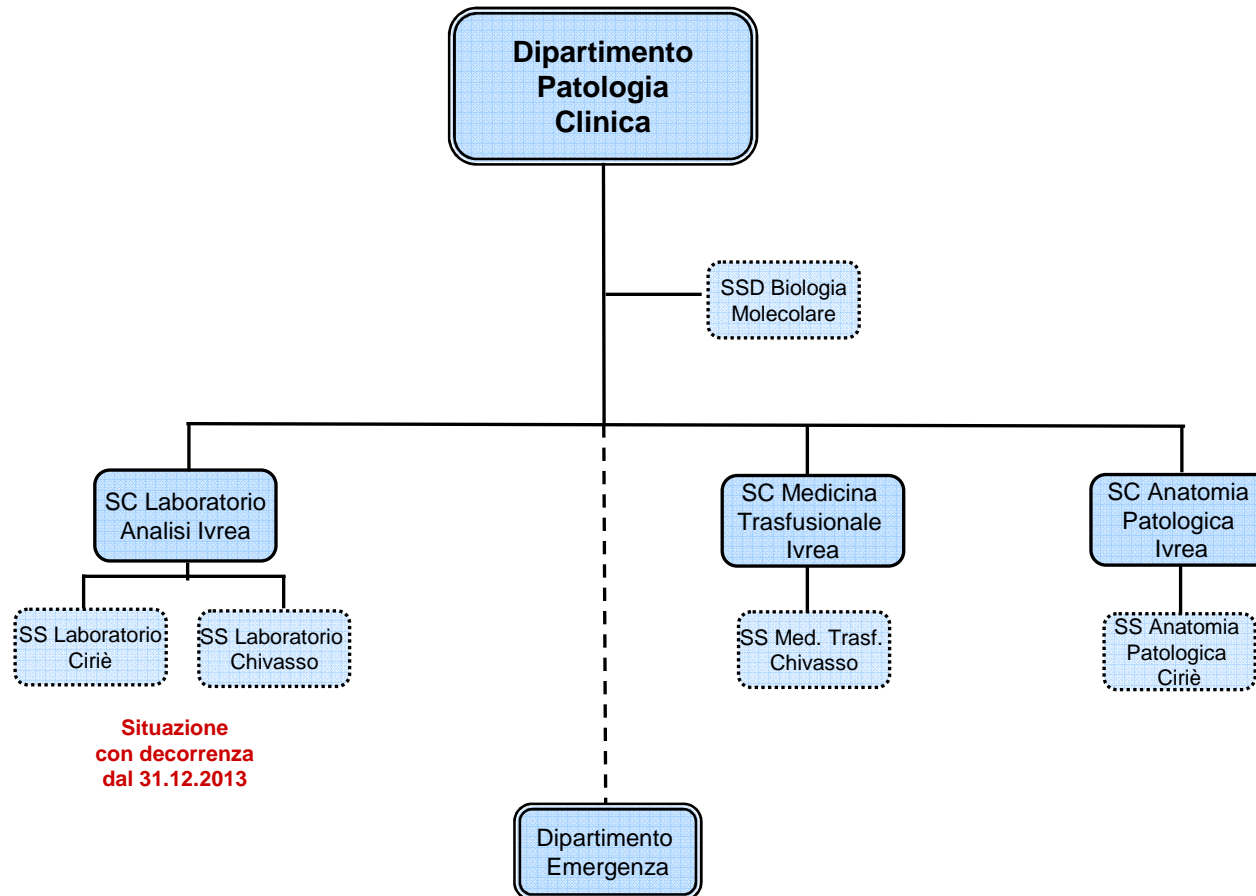
## **2.4. Area Ospedaliera e Dipartimenti**

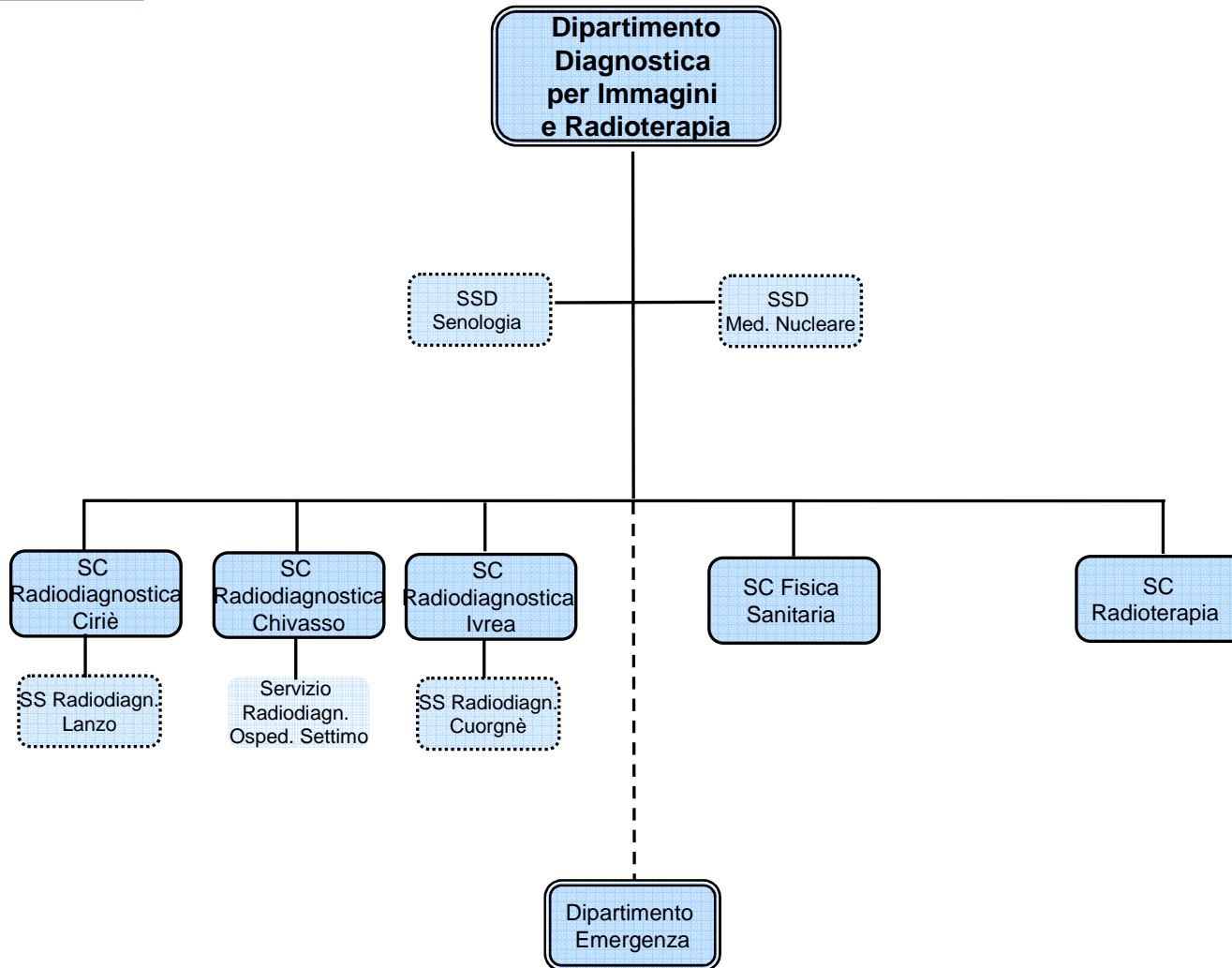
- **Area Integrata Ospedaliera**
- **Dipartimento di Area Medica**
- **Dipartimento di Area Chirurgica**
- **Dipartimento di Patologia Clinica**
- **Dipartimento di Radiodiagnostica e Radioterapia**
- **Dipartimento Materno-Infantile (fase transitoria e definitiva)**
- **Dipartimento di Emergenza**



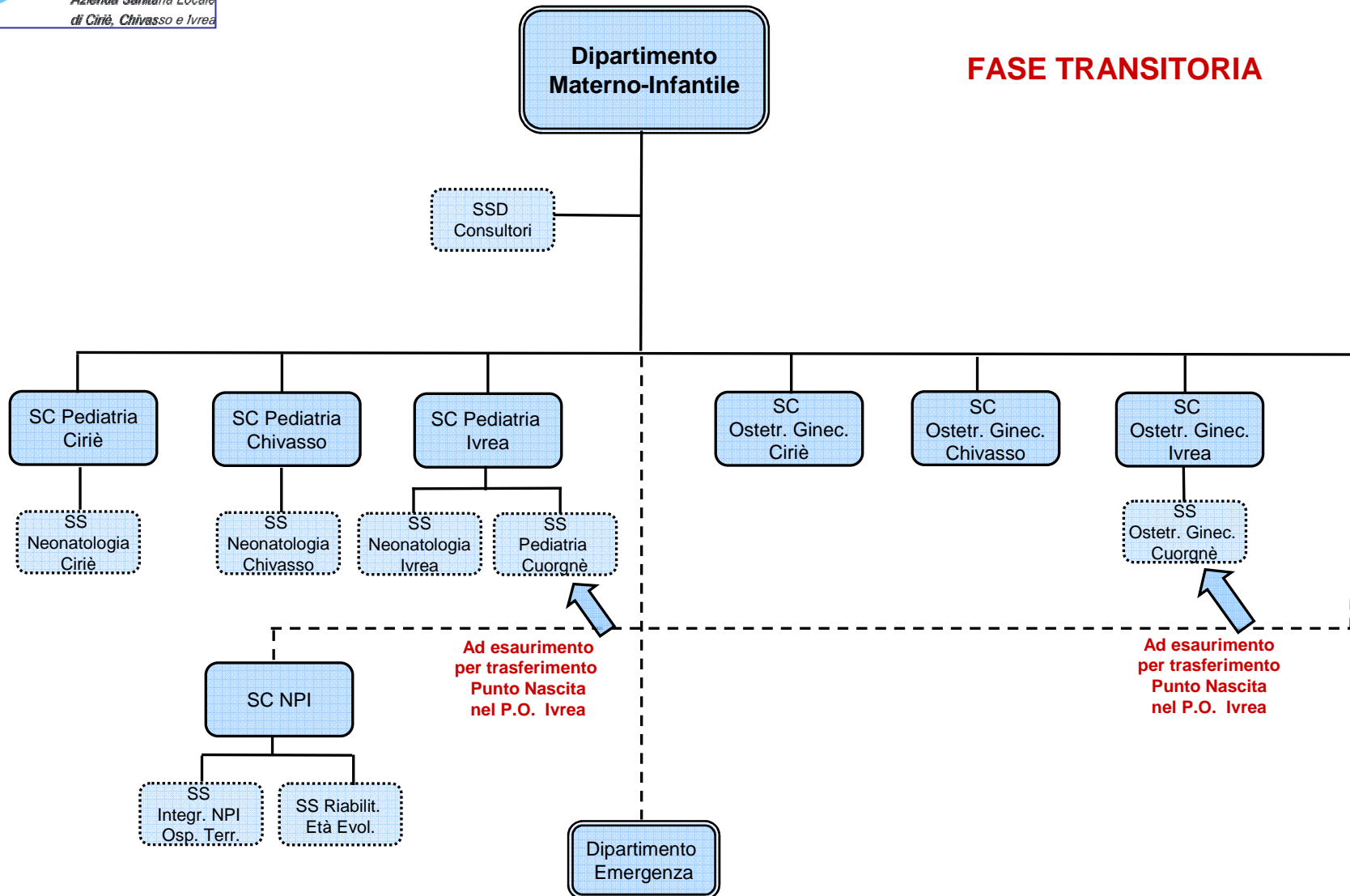


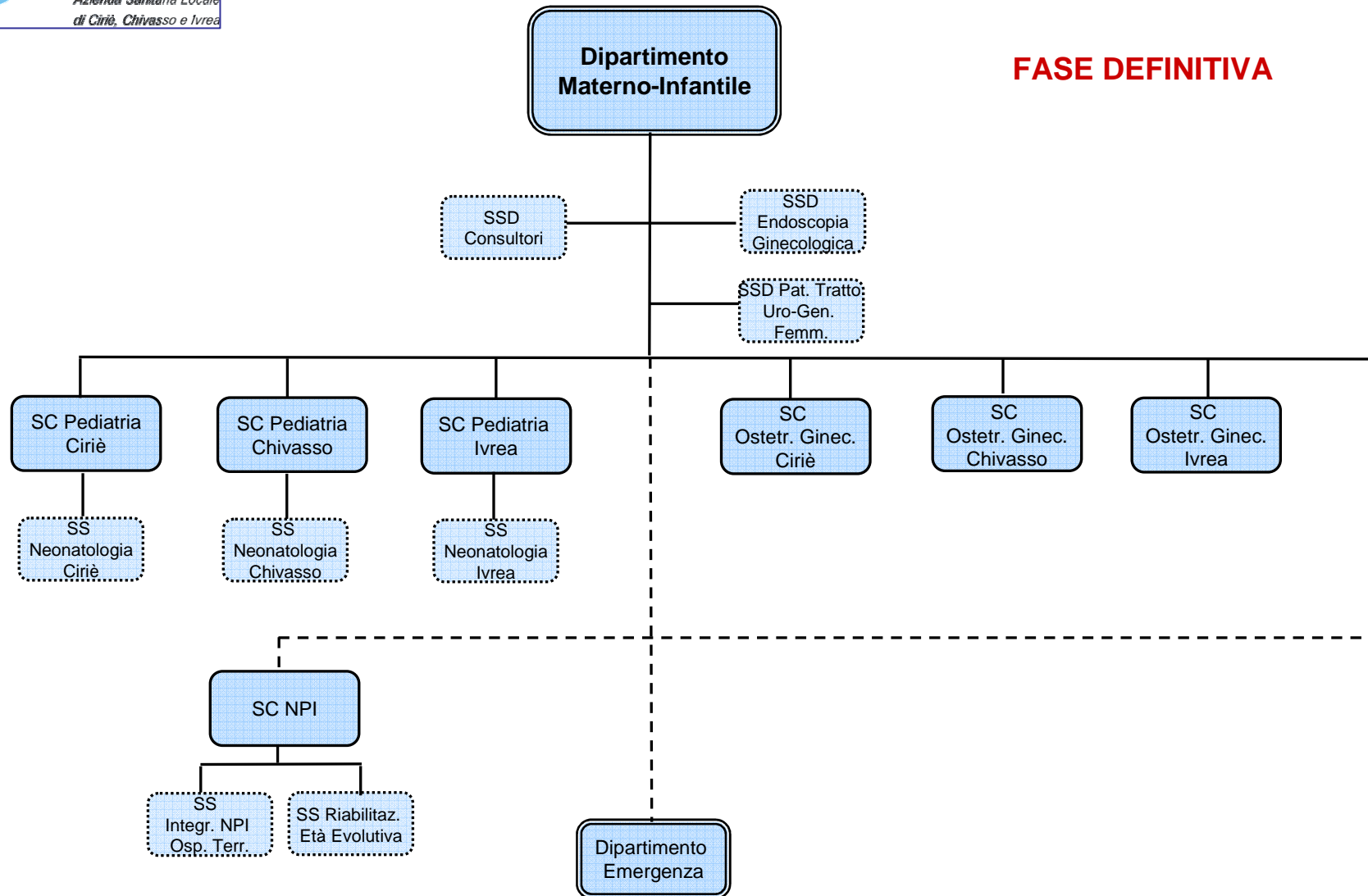


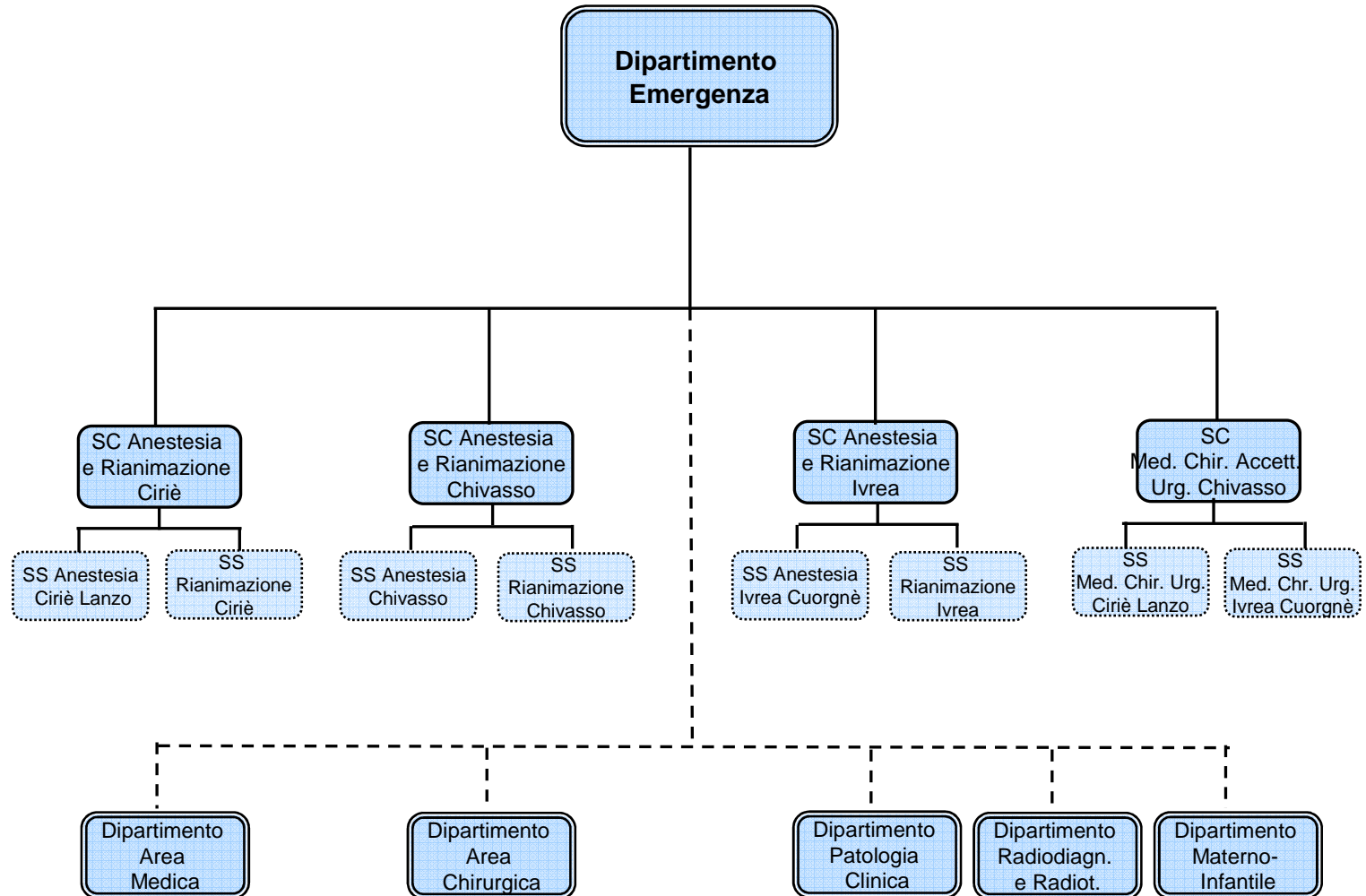














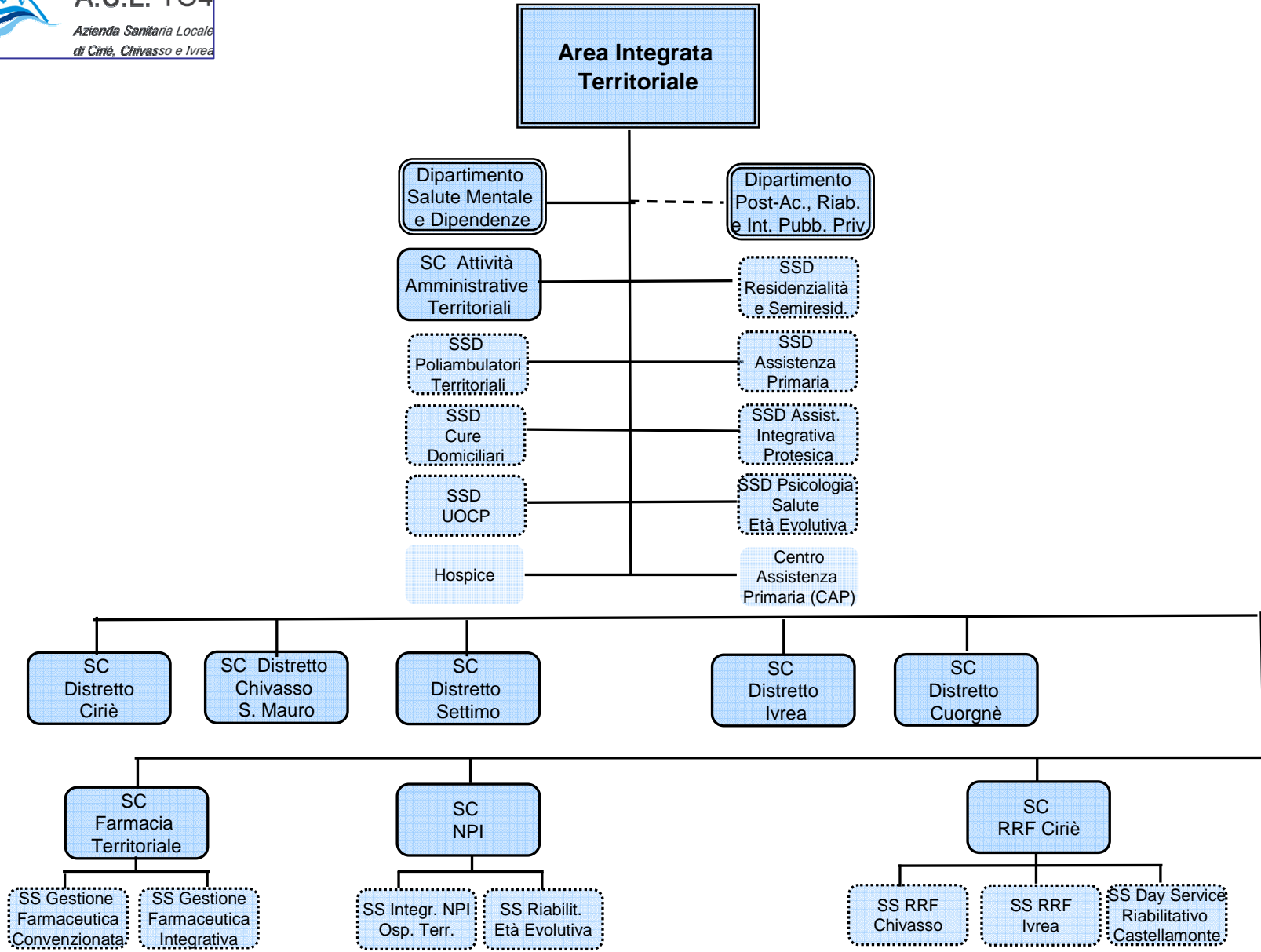
**A.S.L. TO4**

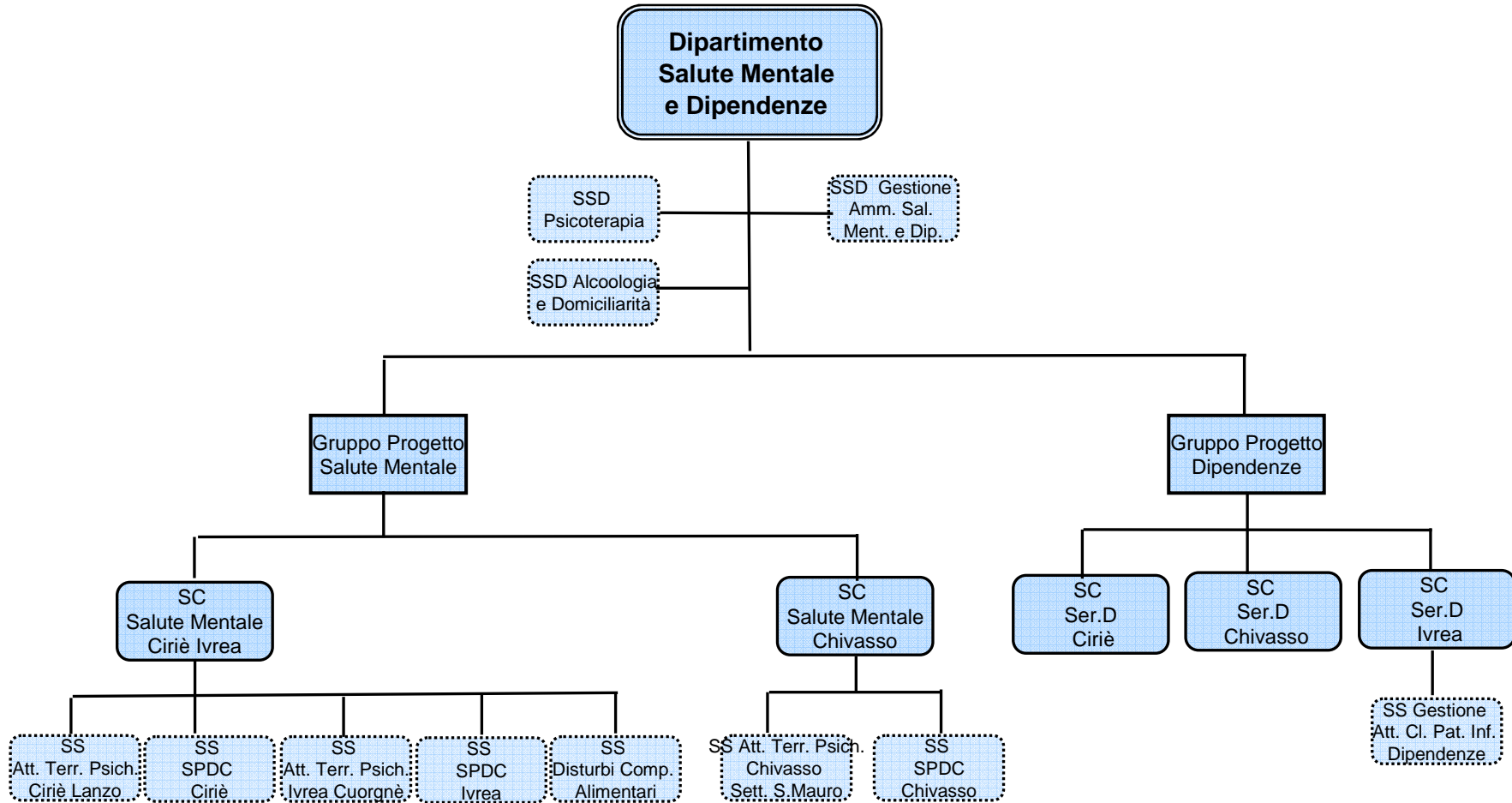
*Azienda Sanitaria Locale  
di Ciriè, Chivasso e Ivrea*



## **2.5. Area Territoriale e Dipartimenti**

- **Area Integrata Territoriale**
- **Dipartimento Salute Mentale e Dipendenze**







**A.S.L. TO4**

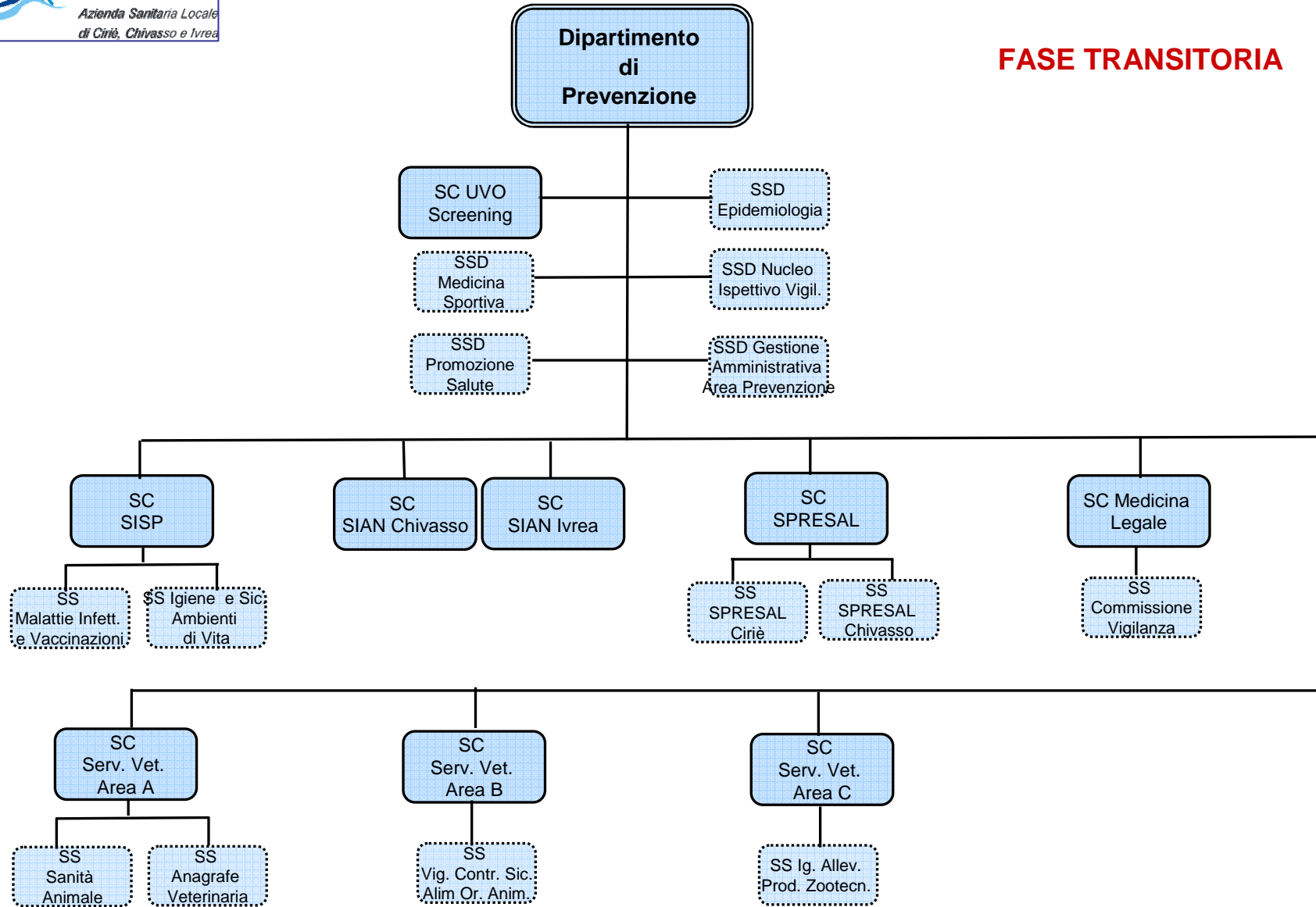
*Azienda Sanitaria Locale  
di Ciriè, Chivasso e Ivrea*



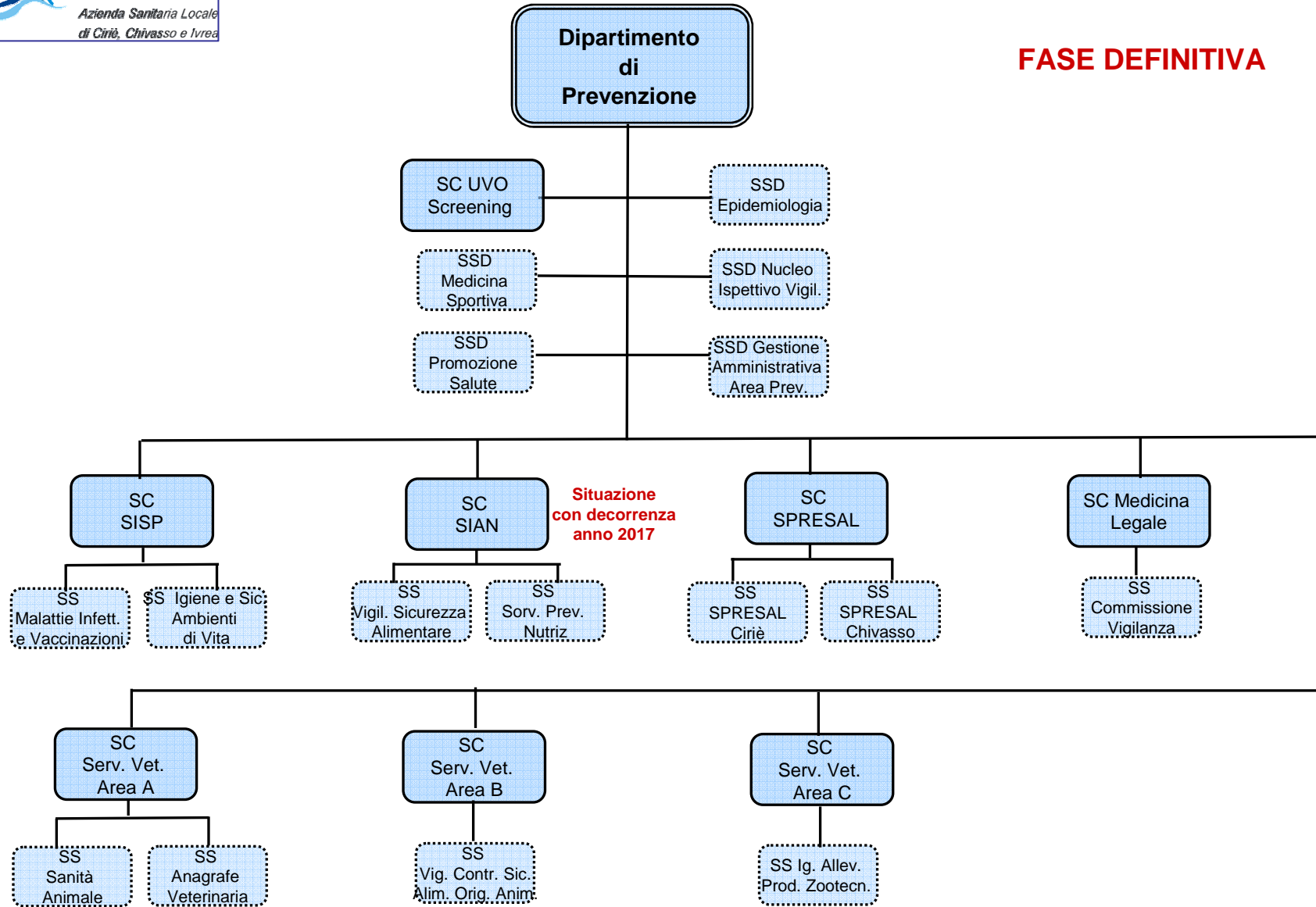
## **2.6. Area Prevenzione e Dipartimento**

**Dipartimento di Prevenzione**  
fase transitoria e definitiva

**FASE TRANSITORIA**









**A.S.L. TO4**

*Azienda Sanitaria Locale  
di Ciriè, Chivasso e Ivrea*



## **2.7. Area Dipartimenti Funzionali**

- **Dipartimento di Post-acuzie e Riabilitazione ed Integrazione tra Pubblico e Privato**
- **Dipartimento HTA, Farmaci, Dispositivi ed Appropriatelyzza**

