



**A.S.L. TO4**

*Azienda Sanitaria Locale  
di Ciriè, Chivasso e Ivrea*

---

**A.S.L. TO4**  
**Atto Aziendale**  
**Piano di Organizzazione 2019**

# **Organigramma**

---

ASL TO 4 – Organigramma  
Ultimo aggiornamento Giugno 2026



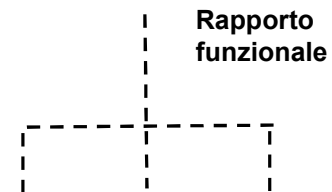
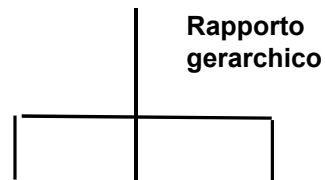
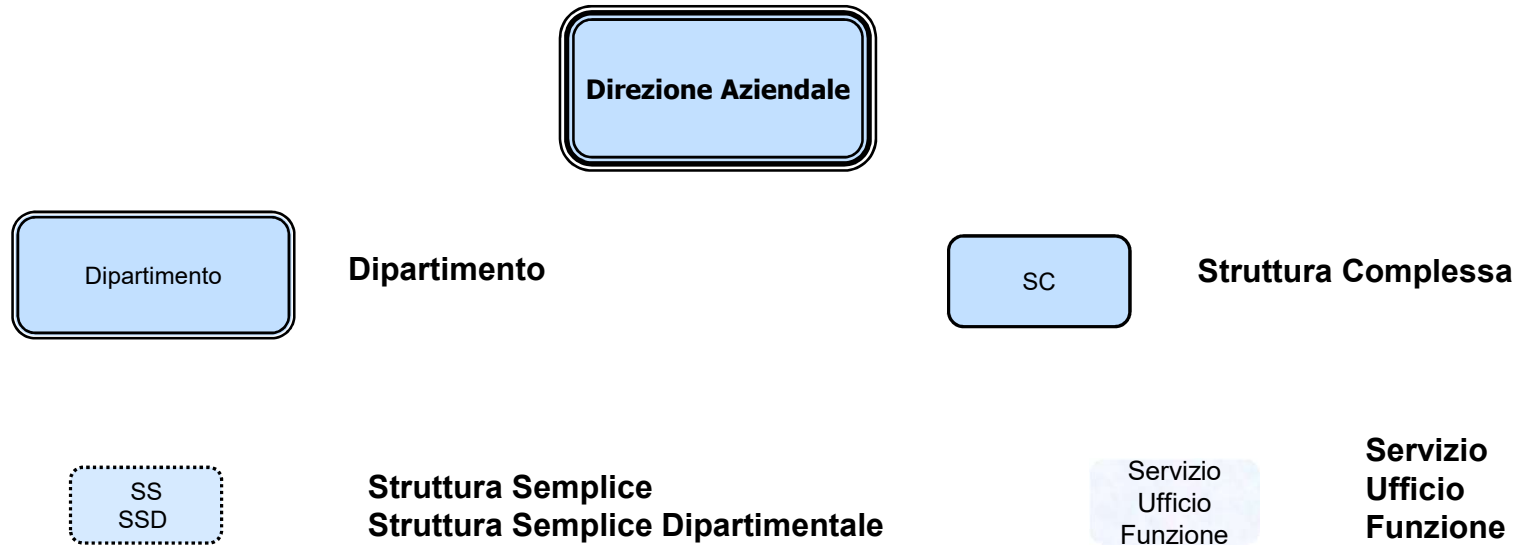
**A.S.L. TO4**

*Azienda Sanitaria Locale  
di Ciriè, Chivasso e Ivrea*



# Organigramma aziendale

## Rappresentazione organigramma e legenda



# Are



A.S.L. TO4

*Azienda Sanitaria Locale  
di Ciriè, Chivasso e Ivrea*

- Articolazione generale
- Area Staff
- Area Amministrativa
- Area Sanitaria (ospedaliera, distrettuale, prevenzione)

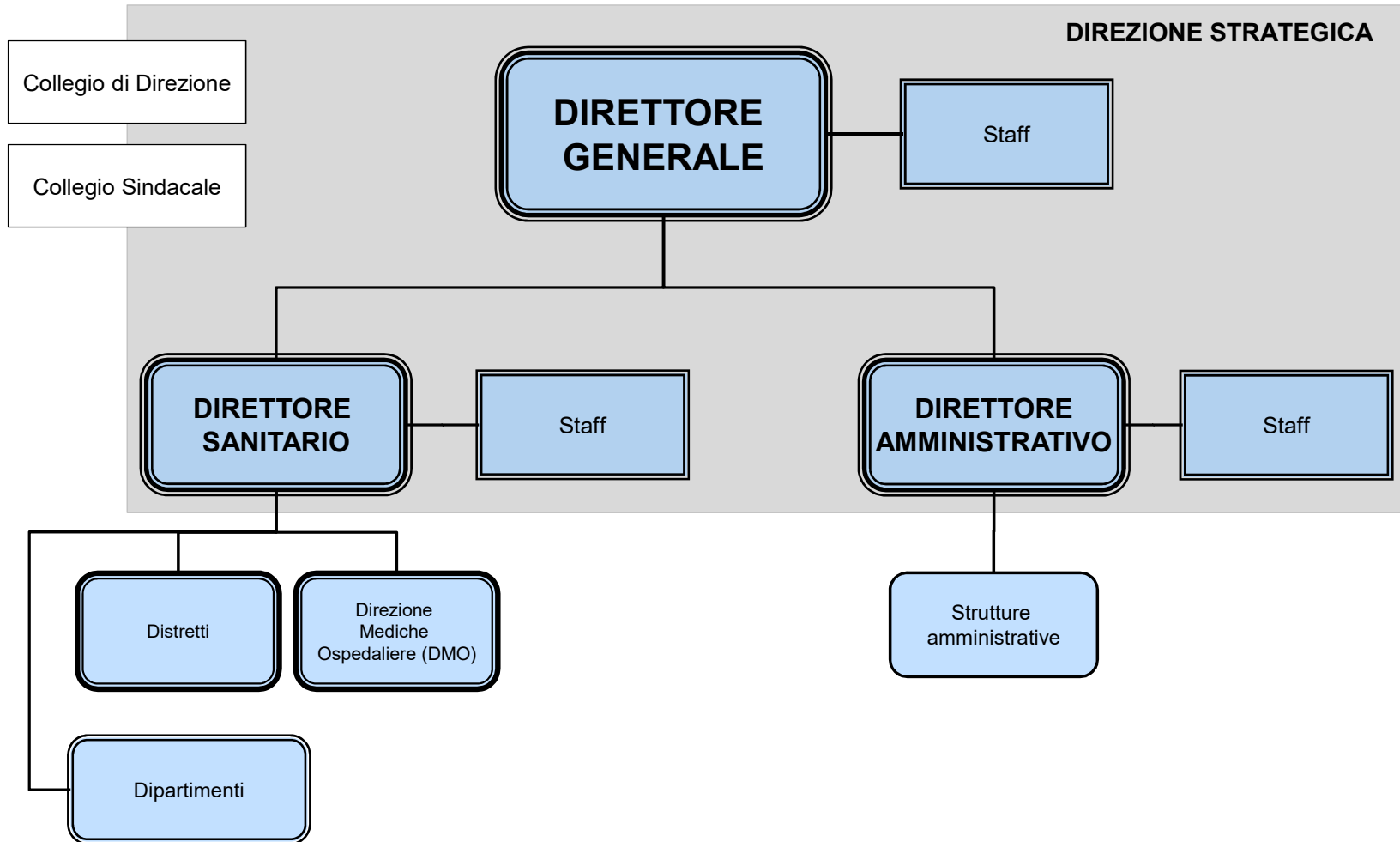


**A.S.L. TO4**

*Azienda Sanitaria Locale  
di Ciriè, Chivasso e Ivrea*



# Articolazione generale





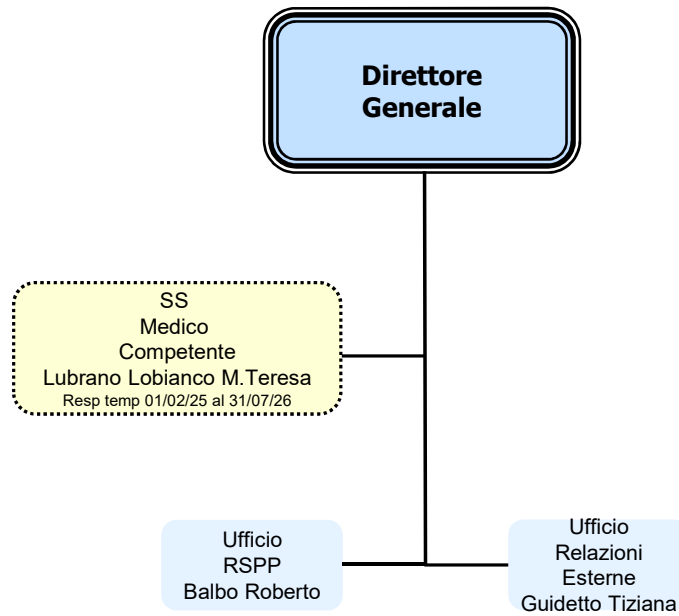
**A.S.L. TO4**

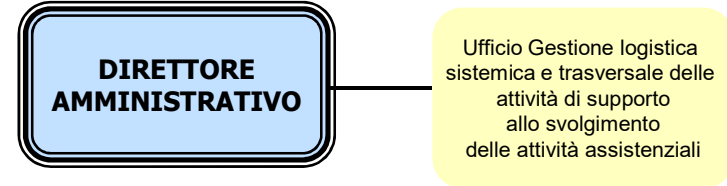
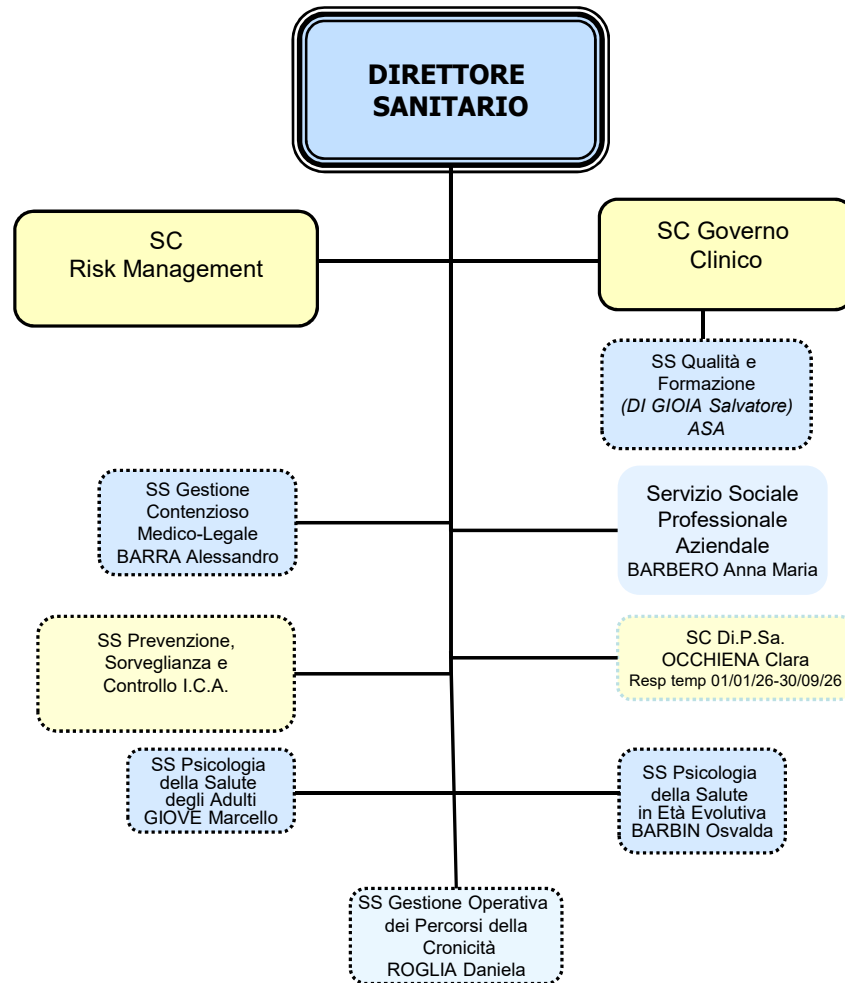
*Azienda Sanitaria Locale  
di Ciriè, Chivasso e Ivrea*



## **Area Staff**

- **Staff Direttore Generale**
- **Staff Direttore Sanitario**
- **Staff Direttore Amministrativo**





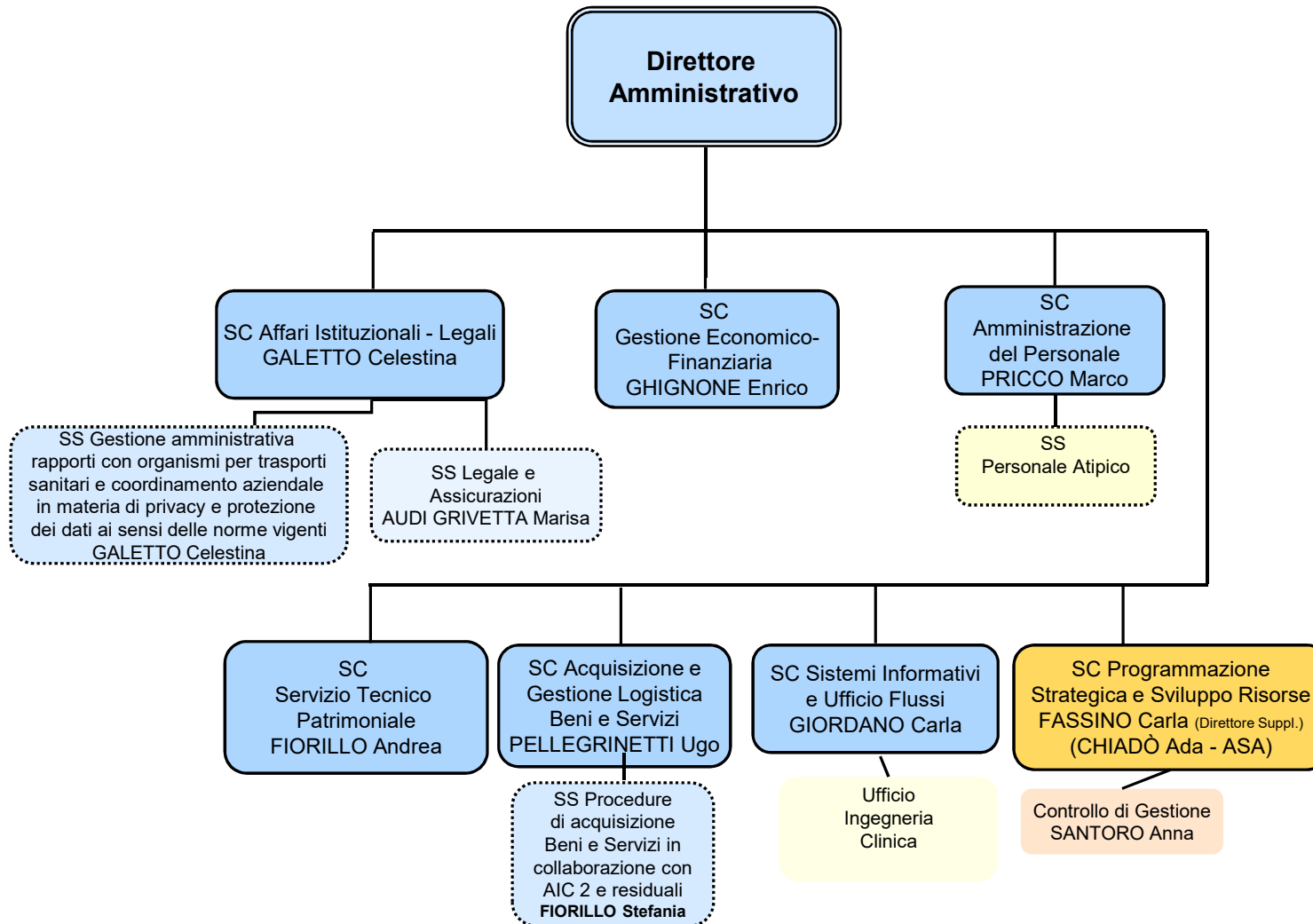


**A.S.L. TO4**

*Azienda Sanitaria Locale  
di Ciriè, Chivasso e Ivrea*



# **Area Amministrativa**



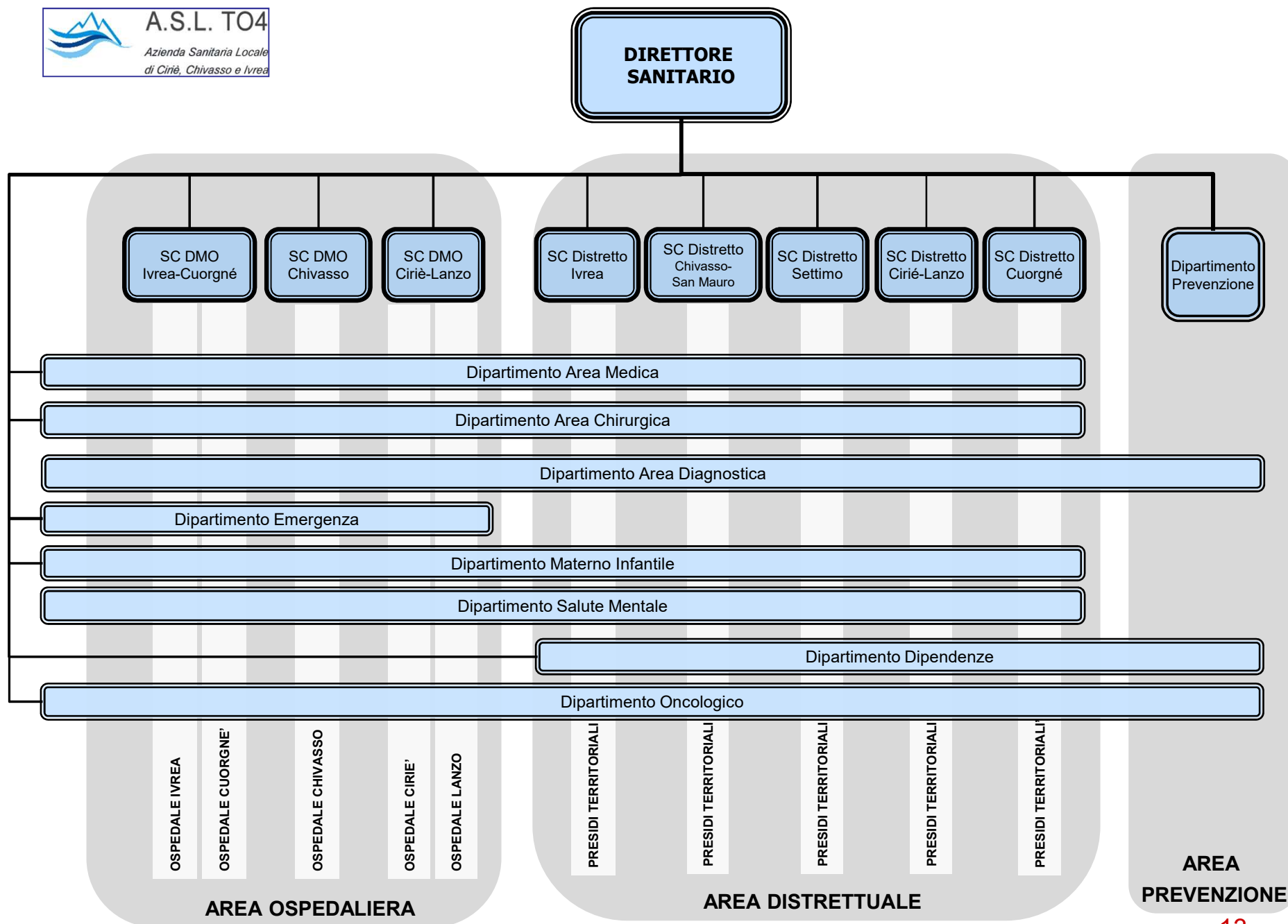


**A.S.L. TO4**

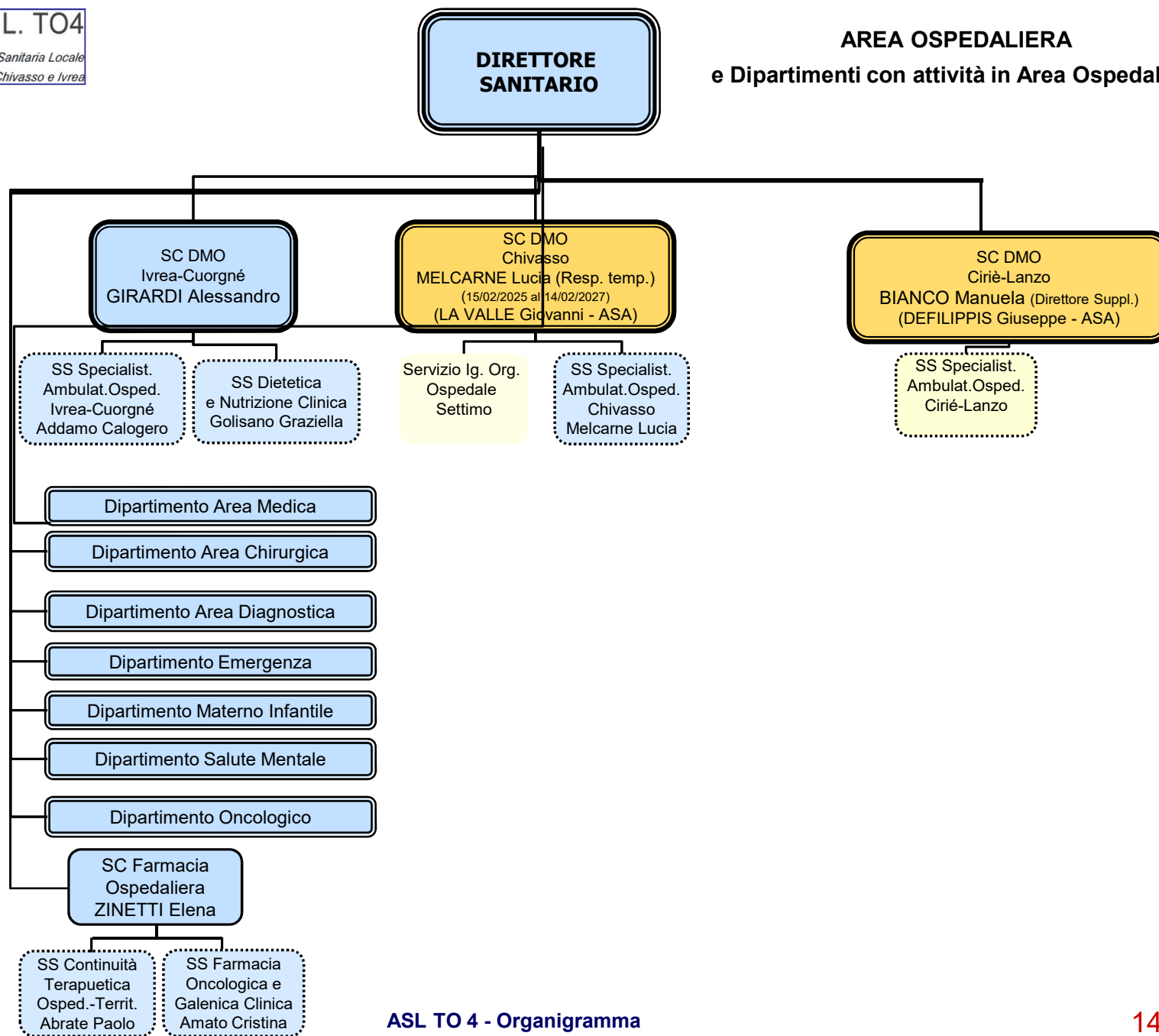
*Azienda Sanitaria Locale  
di Ciriè, Chivasso e Ivrea*



# Area Sanitaria

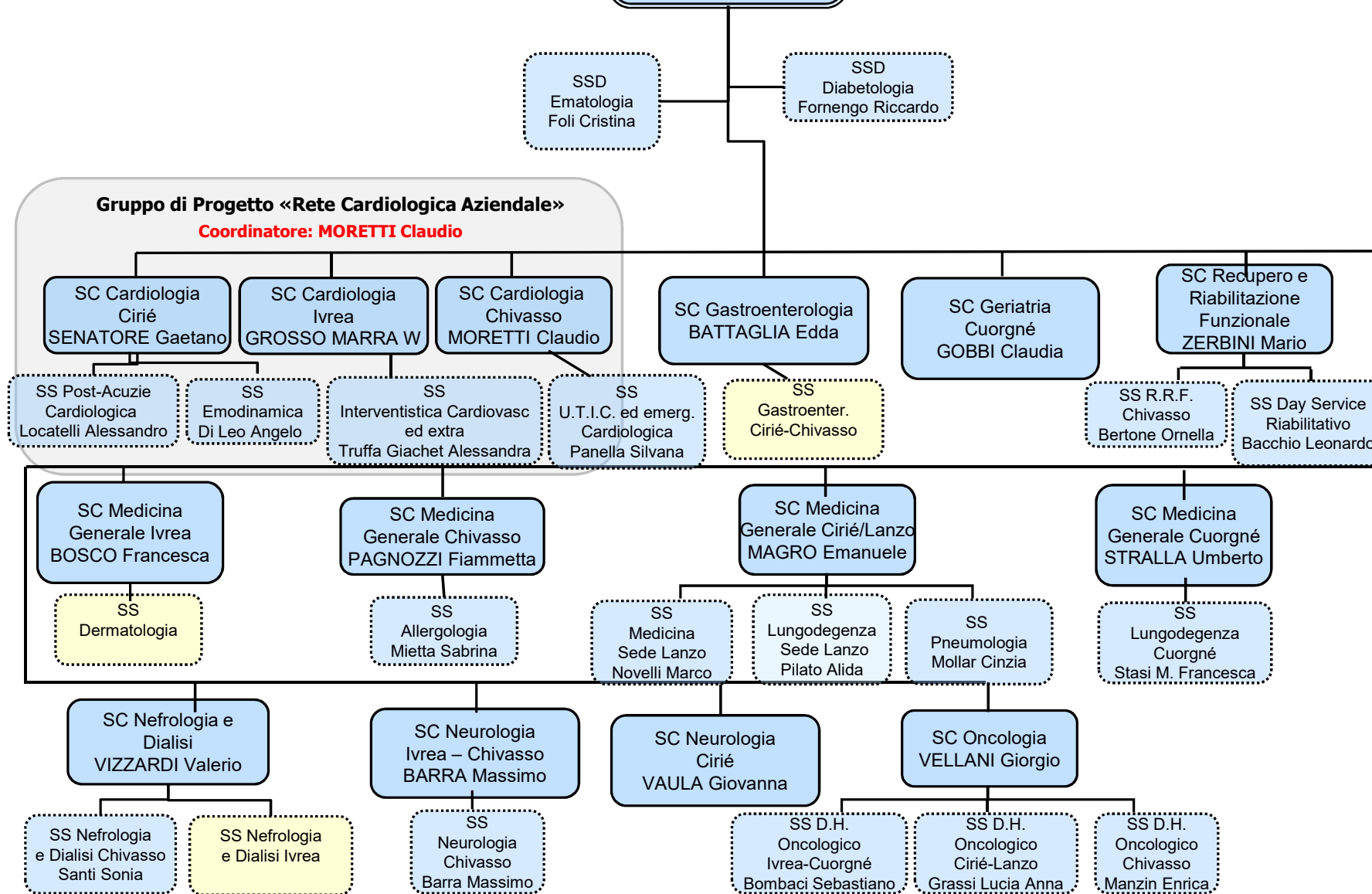


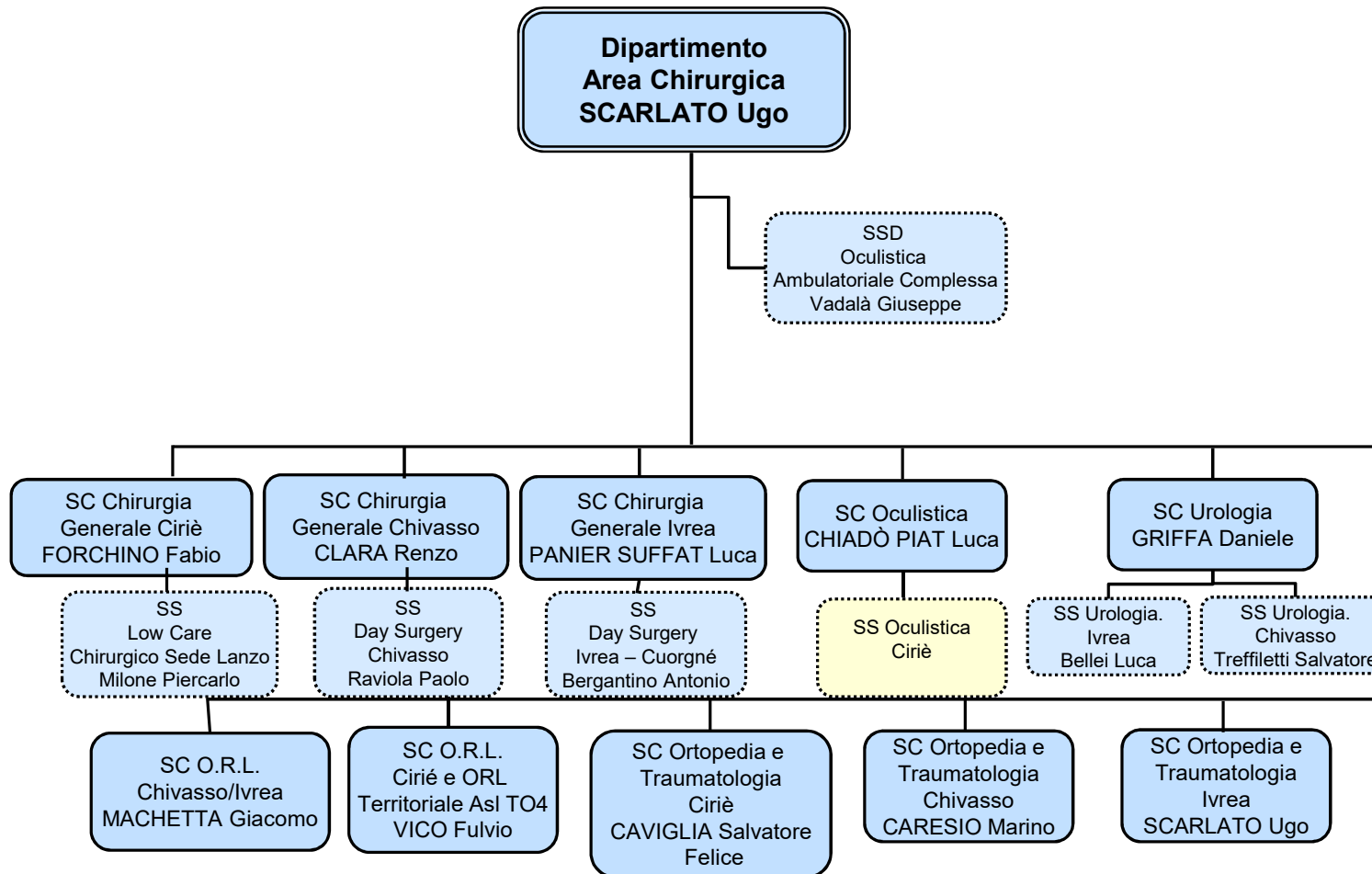
**AREA OSPEDALIERA**  
e Dipartimenti con attività in Area Ospedaliera

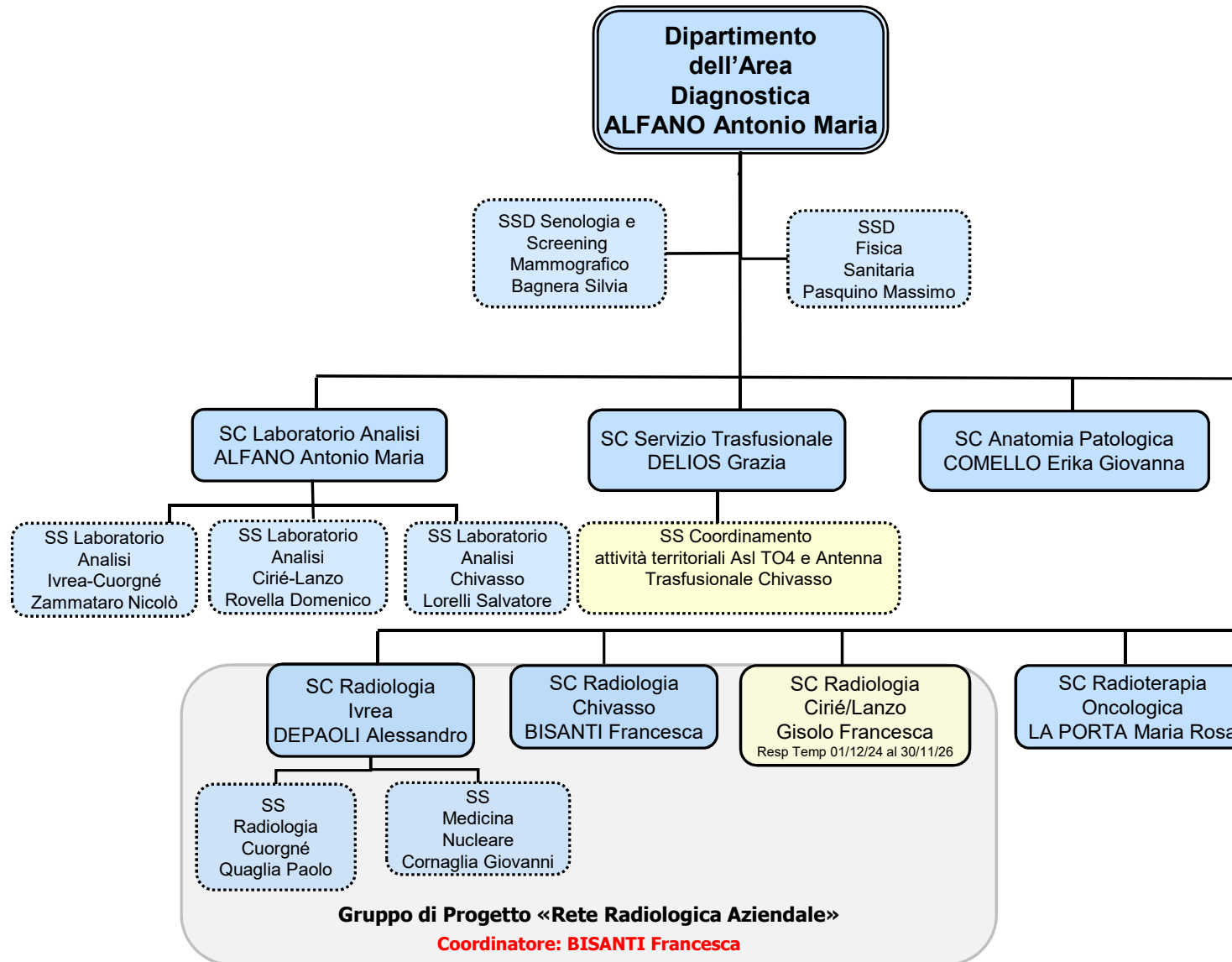


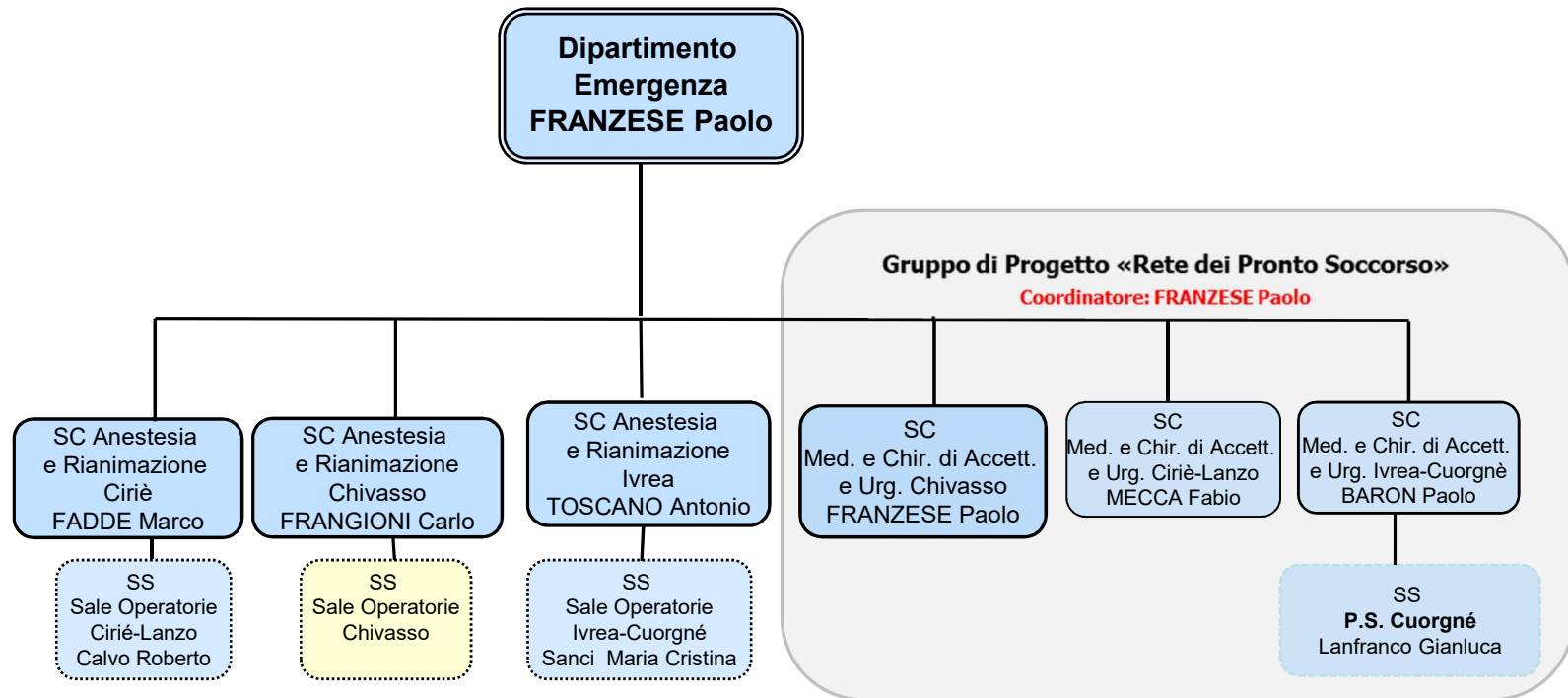
**Dipartimento  
 Area Medica  
 SENATORE Gaetano**

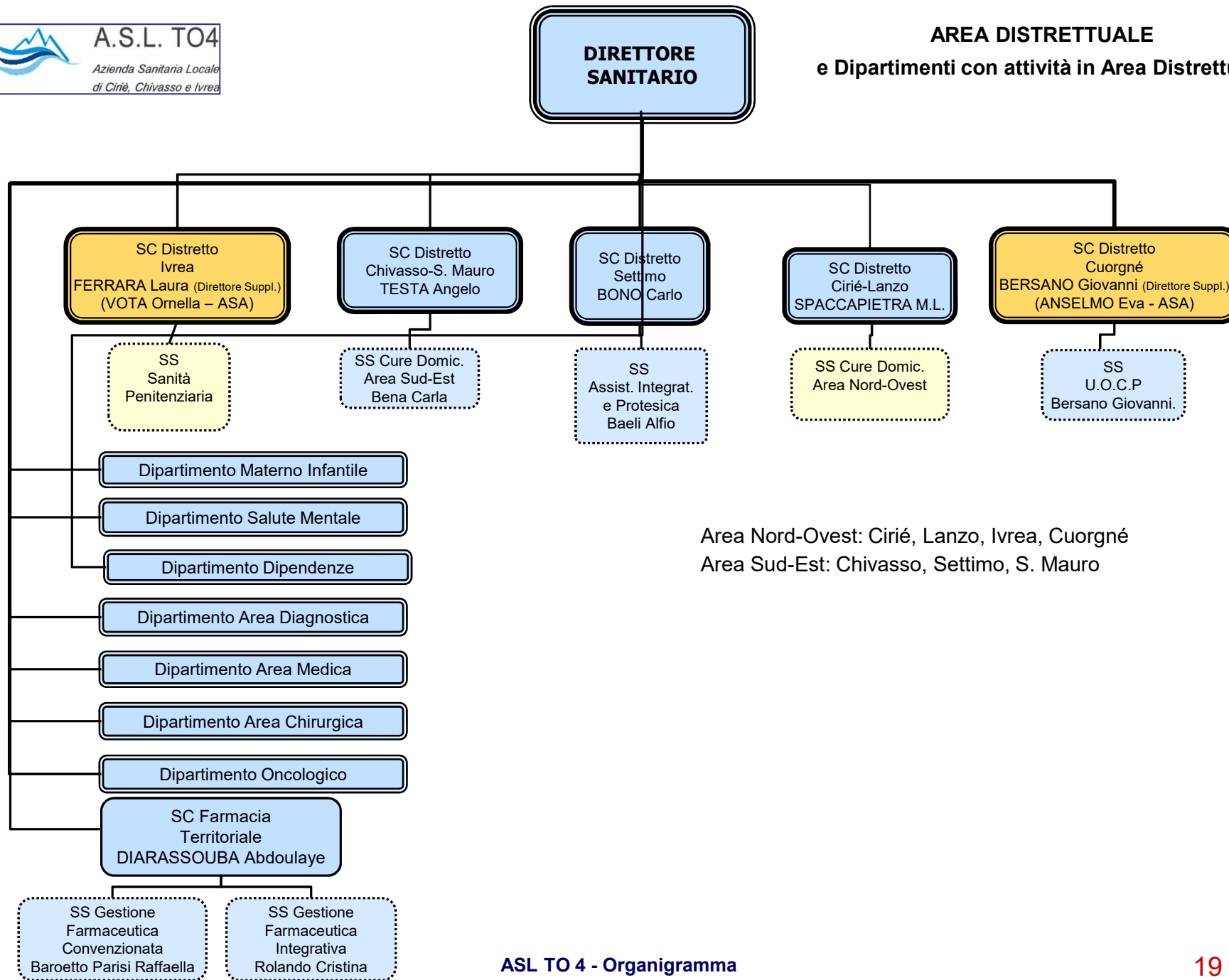
*Dipartimento Strutturale*

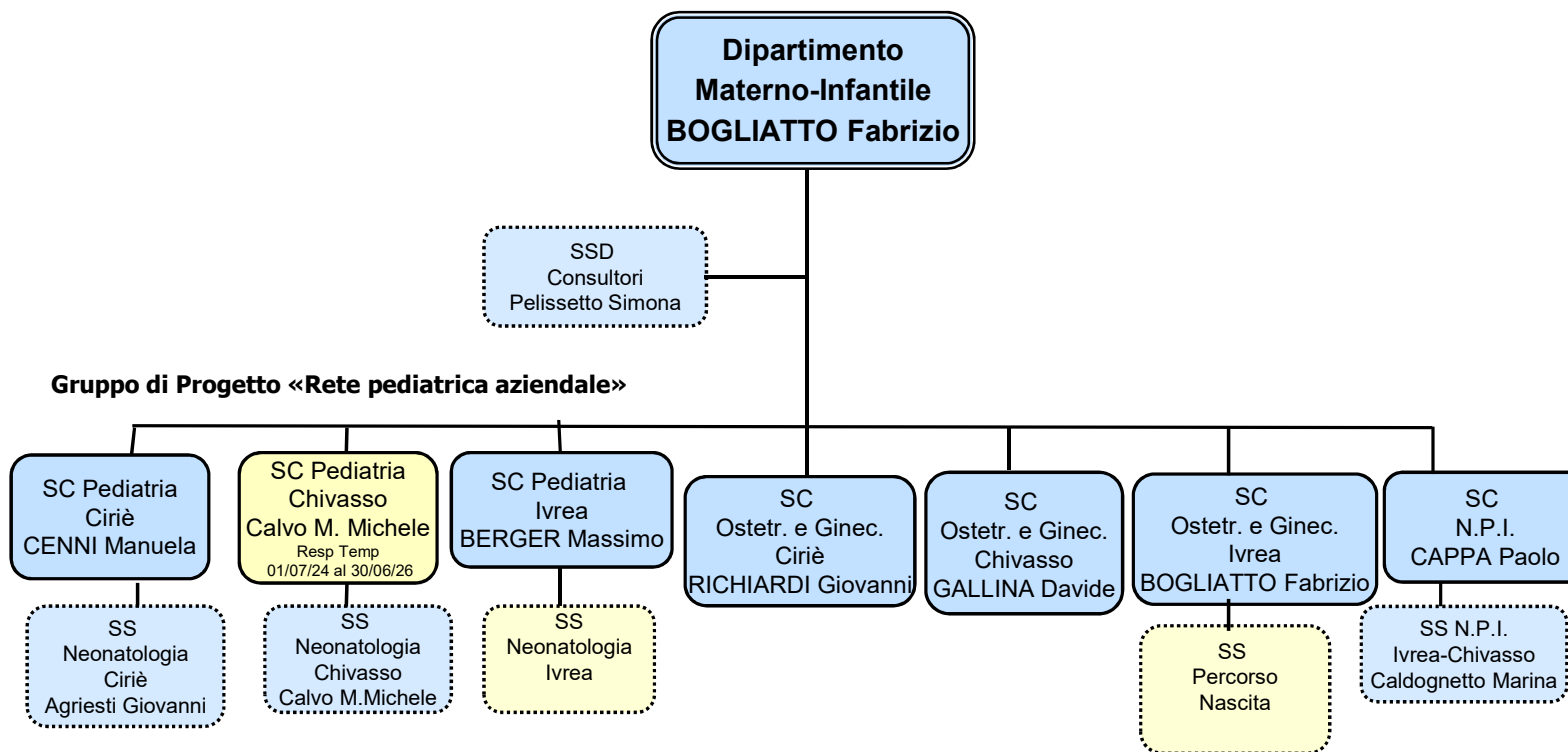


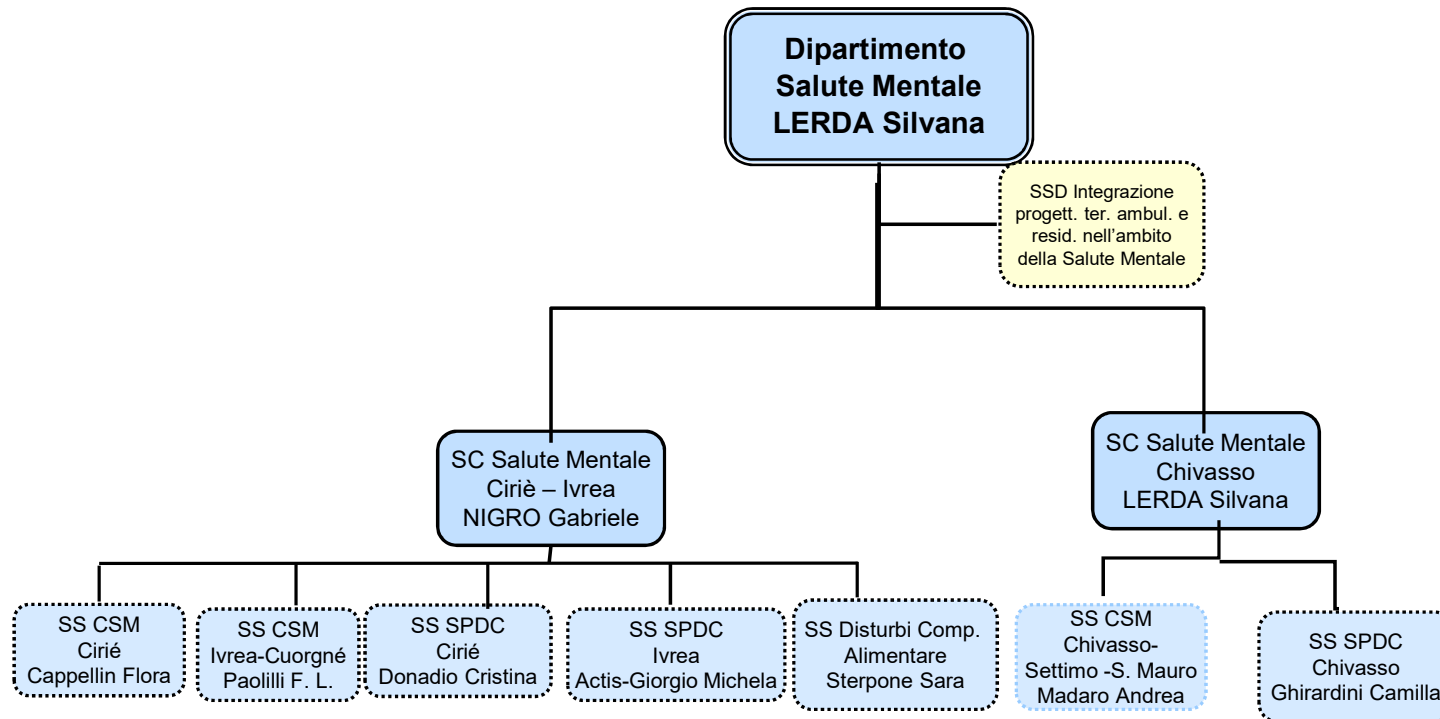


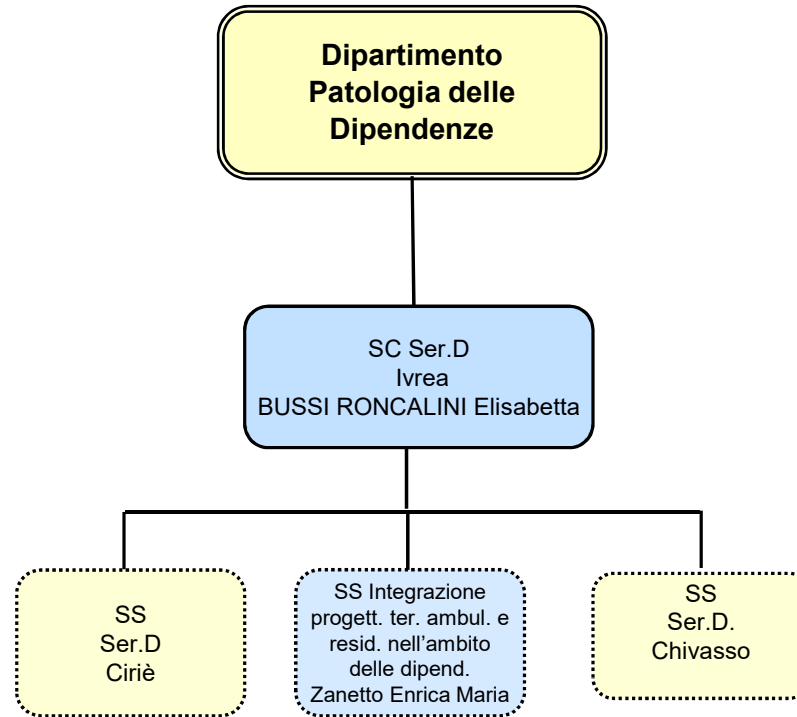












**AREA PREVENZIONE**  
e Dipartimenti con attività in Area Prevenzione

